

OPAL

ALUMINIUM WINDOWS AND DOORS



OPEN UP TO NEW IDEAS ...

ALUMINIUM VS PVC	6
ENERGY EFFICIENCY	8
BUILDING REGULATIONS	9
WINDOWS	10
DOORS	16
FOLD OR SLIDE?	26
DESIGN OPTIONS	28
ENTRANCE & PATIO DOORS	30
HARDWARE	32
SECURITY & LOCK UPGRADES	36
COLOUR	38



MANUFACTURED
IN THE UK



The Opal Aluminium™ range of windows and doors offers exceptional quality when it comes to performance and design, to transform your home into living space that is truly outstanding.

From our ultra-slim bi-folding doors to our iconic steel replica windows, Opal Aluminium™ offers unique solutions for every home.

OPAL

ALUMINIUM VS. PVC

For many years PVC has always been the product of choice for windows and doors. More recently, aluminium has fast become the desired choice for discerning consumers and enhancing commercial projects. Here, we look at the differences between aluminium and PVC and why aluminium is inevitably the better choice.

LONGEVITY

Aluminium windows and doors are much more robust than PVC and they don't rot or rust. They can last around 40-50 years with proper care, whereas PVC has a much shorter life expectancy of around 20 years.



COST

In a nutshell aluminium is more expensive than PVC. However, aluminium is an investment and can be more cost effective as they last much longer and are a much more secure system. Plus they have a much slimmer design.



STRENGTH

Aluminium is much stronger and more durable than PVC. It is a low density metal, so you can achieve very slimline frames which are sturdy and strong. It can also withstand extreme weather conditions.



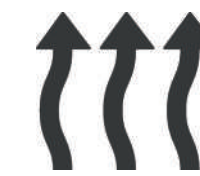
SECURITY

The robustness of aluminium offers superior strength to withstand any attacks. We use top-quality hardware & multipoint shoot-bolt locking mechanisms with the option of 3 locks to completely secure our windows and doors.



ENERGY EFFICIENCY

Aluminium window and doors are thermally broken and exceed all u-value targets. The materials used have a very high resistance to heat transfer giving improved thermal efficiency.



COLOUR

Different colour, finishes and textures on aluminium can be achieved by powder coating and anodised option which provides longevity of colour and performance. PVC has limited colour foil options which can be easily marked and damaged.

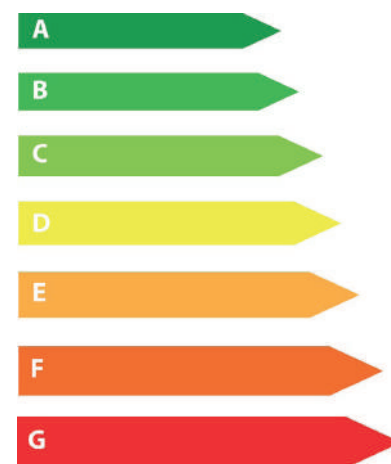


ENERGY EFFICIENCY

With energy bills on the rise, thermal efficiency remains one of the number one priorities for most homes. Loss of heat plays a major part in the usability and comfort of any living space and as a result causes high energy bills. All the Opal windows and doors are enhanced with innovative polyamide thermal barrier technology which enables all our systems to exceed the energy performance requirements of current UK Building Regulations.

Windows are assessed by the British Fenestration Rating Council (BFRC) and rated using a A to G scale on the basis of their total energy efficiency where an A rated window is more efficient than a G rated window. The rating covers the frame material, the frame design, glass type and all other components that make up the window.

- Building control requires windows to satisfy either a U Value of 1.6 or lower or a WER of C or better.
- Building control requires doors to satisfy either a U Value of 1.8 or lower or a WER of E or better.



BUILDING REGULATIONS

Document L

All the windows and doors we offer satisfy Building Regulations Part L for refurbishment and new-build applications. Part L of the building regulations, in tandem with the latest SAP guidance defines how energy efficient buildings should be, and sets building standards to reduce CO2 emissions. Opal Ornate doors satisfy Part M.

Document Q

This latest addition to Building Regulations, brings security to the forefront by setting out reasonable standards for all doors and windows in all new residences or new doors and windows in older properties. Under the new standards, all new doors and windows should be made to a design that has been shown, by test, to meet the security requirements of PAS24:2012.

All homes must be able to demonstrate that the windows and doors satisfy Building Regulations by producing a certificate of compliance either from an approved installer or your Local Authority Building Control Department.

Please speak to our technical department if you require further clarification on Document L, Q, M or Building Regulations.

OPAL WINDOWS

LIVING | ELEGANCE | HERITAGE | TILT & TURN

Aluminium windows are fast becoming the material of choice for homeowners who want a low-maintenance window with high performance levels at an affordable cost. A naturally durable material, aluminium improves the warmth and energy efficiency of your home whilst also looking incredibly stunning. The slim profiles mean more light and less frame providing a contemporary, sleek appearance. With a range of systems to choose from and hundreds of colours and finishes, aluminium windows are the perfect investment for any home.

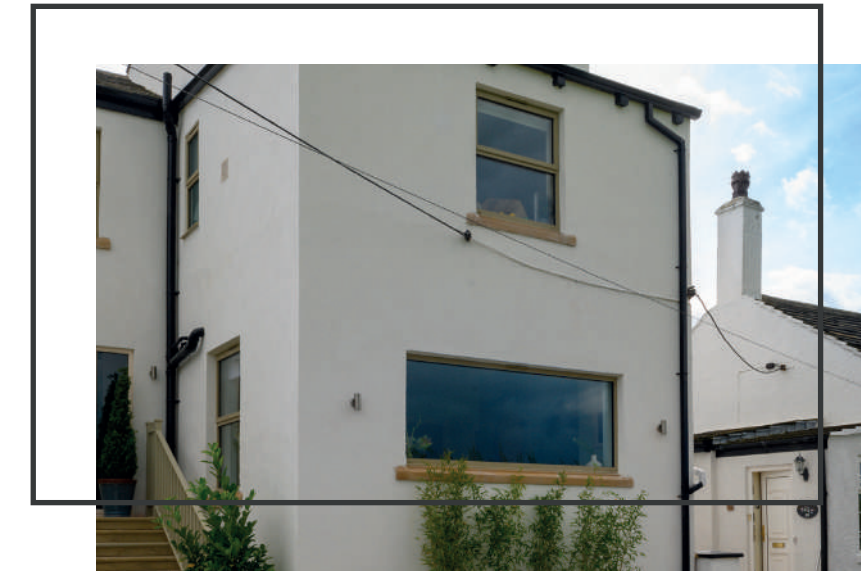


| LIVING



The Opal Living window system is our standard and most popular window offering which is suitable for PVC replacements throughout any home. This versatile range of profiles can provide many solutions for residential and light commercial applications. It can create traditional casement windows inspired by the elegance and styling of timber products, or contemporary style windows designed for modern homes or offices. Available in a choice of sash options - Chamfered or Square so there is a style to suit everyone.

CREATE LASTING IMPRESSIONS WITH OPAL LIVING



As seen on
Channel 4's
'Old House,
New Home'



U-value 1.3 | WER B | Frame Depth 59 & 70mm
Side Hung Max Width - 1000mm, Max Height - 1400mm
Top Hung Max Width - 1400mm, Max Height - 1500mm
Glazing: 28mm or 38mm double or triple glazed units



Opal Elegance have a flush sash finish and are the ultimate window for clean and modern aesthetics. The sash (the opening part of the window) sits on the same plane as the rest of the window creating a flush, in-line cutting-edge look to this high performance window system.

FLUSH SASH FINISH FOR ULTIMATE ELEGANCE

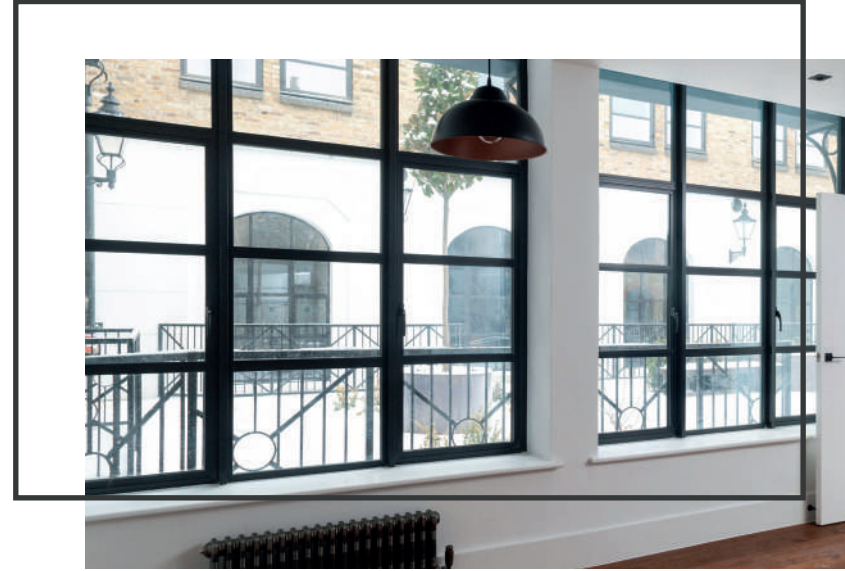


U-value 1.3 | WER A | Frame Depth 70mm
Side Hung Max Width - 700mm, Max Height - 1400mm
Top Hung Max Width - 1400mm, Max Height - 1300mm
Glazing: 28mm or 38mm double or triple glazed units

CHOICE OF HARDWARE

(upgrades available)





Opal Heritage has extremely slim sightlines and is often specified for applications such as listed building renovations. They have been designed as a direct replacement for steel windows. This system can also be used for single, double and bi-folding doors to create a slimline, contemporary alternative.

U-value 1.5 | WER B | Frame Depth 49mm | Sightlines 59mm
 Side Hung Max Width - 600mm, Max Height - 1400mm
 Top Hung Max Width - 1400mm, Max Height - 1400mm
 Fixed Max Width - 2100mm, Max Height 2100mm
 Glazing: 24, 28, 32 & 36 double or triple glazed units

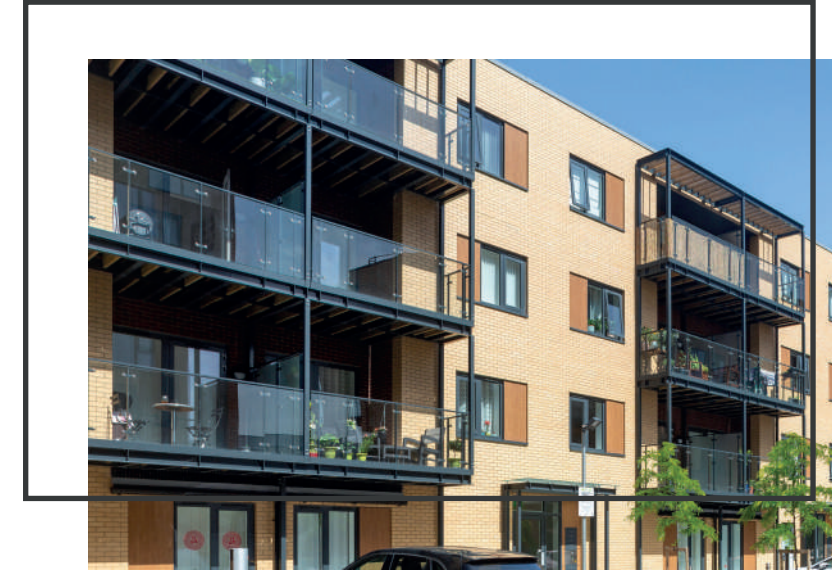
PERFECT ALTERNATIVE TO STEEL



VARIED RANGE OF HARDWARE

(upgrades available)

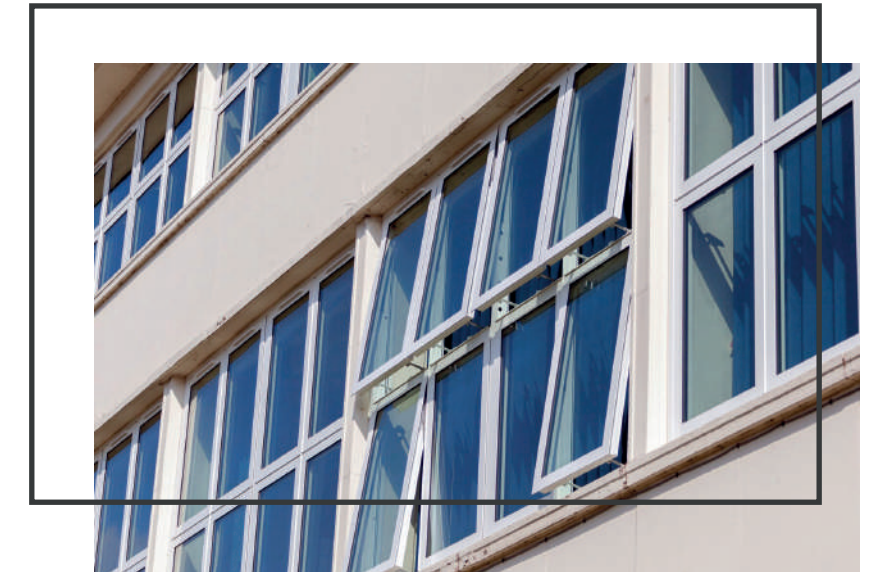
Ask to see our Opal Heritage brochure



Opal Tilt & Turn windows are a versatile, elegant range of high performance windows suitable for use as tilt & turn, pivot casement, fixed and open out casement windows. They are most common for contemporary domestic properties or commercial applications including education, healthcare and retail buildings but are also a great alternative for residential properties too including apartments.

U-value 1.4 | WER A | Frame Depth 65mm
 Please ask for Width & Height dimensions

VERSATILE, HIGH PERFORMANCE WINDOWS



CHOICE OF COLOURS



OPAL DOORS

DEFINITIVE | DELUXE | FINESSE | ORNATE | OPULENCE

As you look to extend or refurbish your home, consider adding bi-folding or sliding doors to let in the maximum amount of light, retain heat and keep noise out. Our range of aluminium doors create vast openings in an instant, bringing alfresco living to life at the turn (or pull) of a handle. Due to the natural strength of aluminium, our aluminium doors can be made much slimmer than PVC which results in larger glass areas. We also offer aluminium entrance doors which not only enhance the appearance of any home but that also bring further security, energy efficiency and style to the property.



As seen on
Channel 4's
'Old House,
New Home'



THE IDEAL ALTERNATIVE TO PATIO DOORS




Opal Definitive smooth sliding bi-folding doors are an ideal alternative to patio doors and suitable for both domestic and commercial applications. They slide effortlessly with the option to fold the sashes internally or externally, place the opening at the side so the sashes all fold one way at one end, to create a single entrance door for easy access.



Opal Definitive's flexibility makes it the ideal choice for projects where large, uninterrupted openings are required, with the system providing maximum light and space to give unimpeded views. The highly-versatile, easy-to-operate system is the perfect option for even the largest project, capable of opening up an entire wall, yet presenting a contemporary, elegant glazed façade when closed.

All Opal profiles feature a thermal break to deliver enhanced thermal performance and energy efficiency and security is assured by multi-point lock mechanisms on the main opening sashes, and shoot-bolt locks on the 'floating' mullions. The doors can have either a low threshold for unimpeded access, or a rebated threshold for improved weather resistance.

Opal doors are available in a choice of standard or non-standard colours, including metallic, wood-structure, dual colour and our unique Sensations range of textured finishes.

Ask to see our swatches! 













U-value 1.5W/m²K using 1.0 W/m²K centre pane
Frame Depth 70mm | Sightlines 132mm
Fixed Max Width - 1200mm, Max Height 2500mm
Slide Folding Max Width - 1200mm, Max Height - 2500mm
Max Weight 100kg (all sizes/weights are per sash)

VARIED RANGE OF HARDWARE

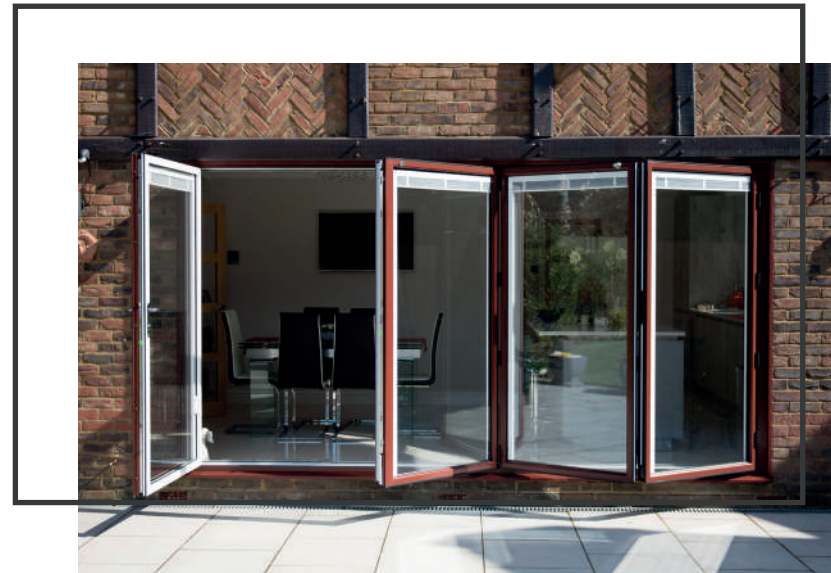
(upgrades available)



									
U Value 1.5W/m ² K	Certified PAS24: 2012	Certified BS 6375	Certified DOCUMENT L	Dual COLOUR	Multipoint LOCK	Max Sash Width 1200mm	Max Sash Height 2500mm	Max Sash Weight 100kg	Sash Sightline 132mm



OUR SLIMMEST BI-FOLD FOR ULTIMATE LIGHT



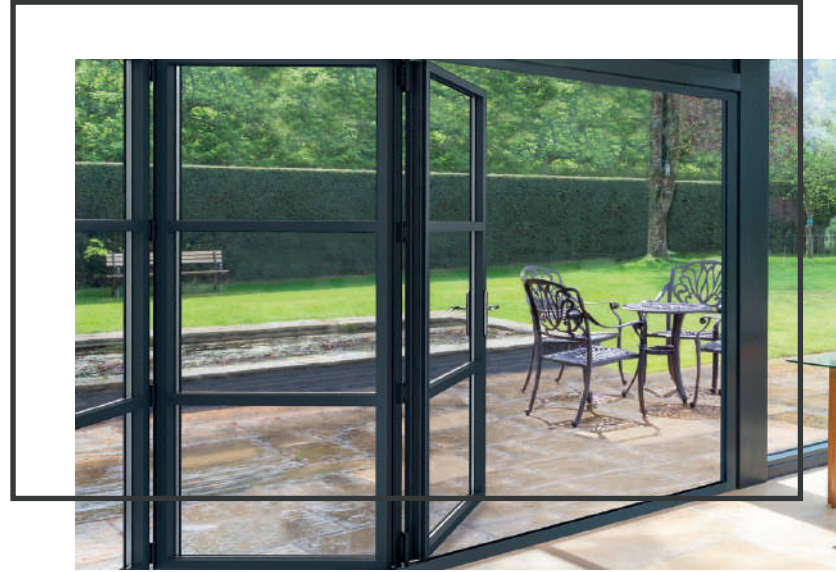
Opal Deluxe bi-folding doors have much slimmer, narrower sightlines and frames (94mm compared to Opal Definitive which has 132mm sightlines) therefore maximising light and space to give unimpeded views. With high-security glazing, robust locking mechanisms, and an unrivalled colour range, these doors can be tailored to meet your specific requirements.

U-value 1.5W/m²K using 1.0 W/m²K centre pane
Frame Depth 76 or 82mm | Sightlines 94mm
Slide Folding Max Width - 1000mm, Max Height - 2200mm
Max Weight 100kg (all sizes/weights are per sash)



BLU™ UPGRADES AVAILABLE





REPLICA OF TRADITIONAL STEEL DOORS



Opal Heritage bifolds are a high quality, high performance slide, folding door developed to match the slim profiles and Art Deco design of traditional steel doors. They provide a modern like-for-like replacement for steel materials and deliver exceptional thermal performance associated with modern aluminium systems. Ask to see a copy of our Opal Heritage brochure for more information or to see our full range!

CHOICE OF COLOURS & FINISHES





Opal Finesse sliding doors maximise light to provide fantastic views of your outdoor space. These sliding doors feature beautiful slim sightlines (52mm), open and close with ease, are lightweight, low maintenance and remain smooth and secure. There is also the option to upgrade to 'soft close' meaning they close smoothly and quietly, without even noticing their presence.

U-value 1.6 | Frame Depth 100mm | 117mm (OF) 83mm (IL)
Sliding Door Max Width - within height & weight limitations
Sliding Door Max Height - 2500mm per sash
Max Weight 250kg, 38mm Double or Triple Glazing

SMOOTH-SLIDE GLIDING DOORS



UPGRADE YOUR HARDWARE



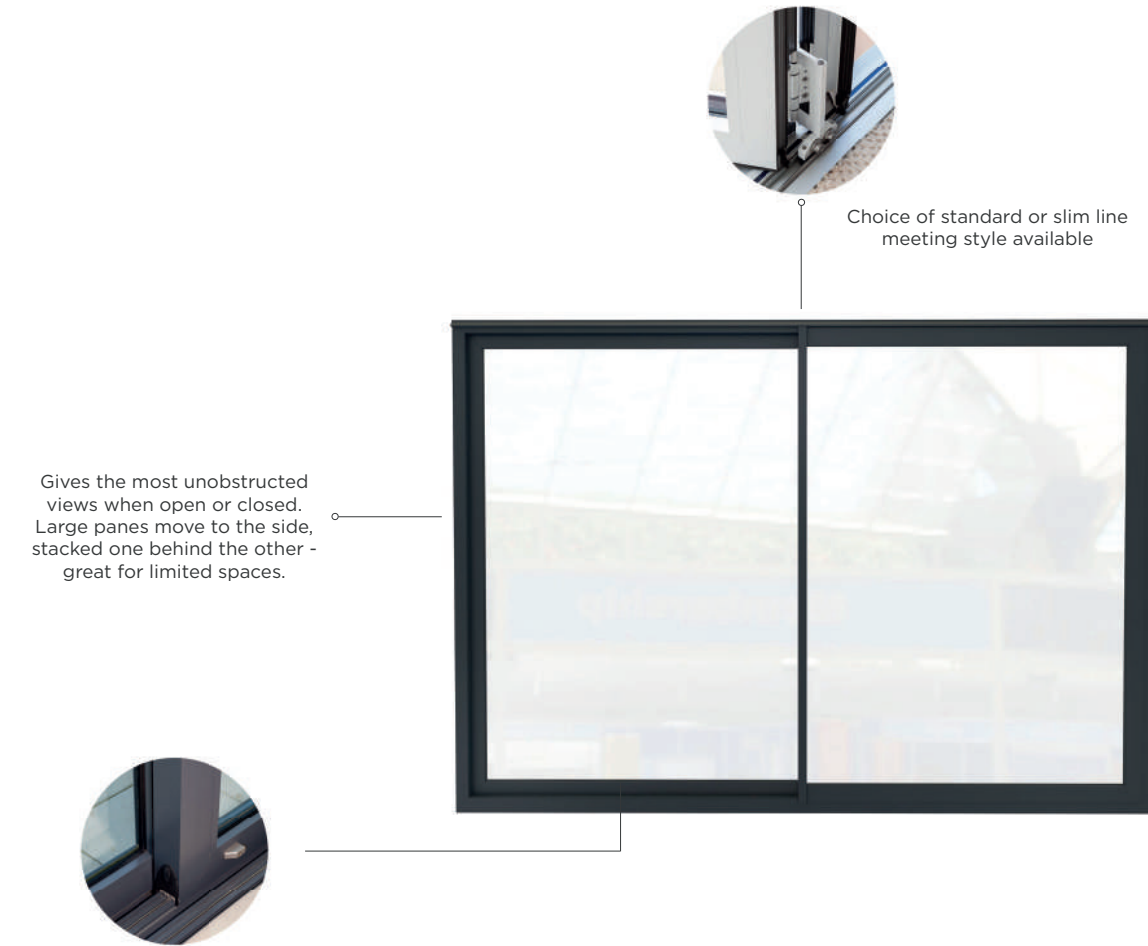


BI-FOLDING DOORS

CONSIDER IF...

- They will be used as an access door too. You can quickly nip in and out of bi-folds for everyday use (if an access door is possible with your configuration.)
- If you want to be able to fully open the doors to give the seamless transition from inside to outside.
- There is a step down to the outside as folding doors have the choice of flush or weathered tracks.

Multiple door leaves concertina to the side. Choose from a range of design options.



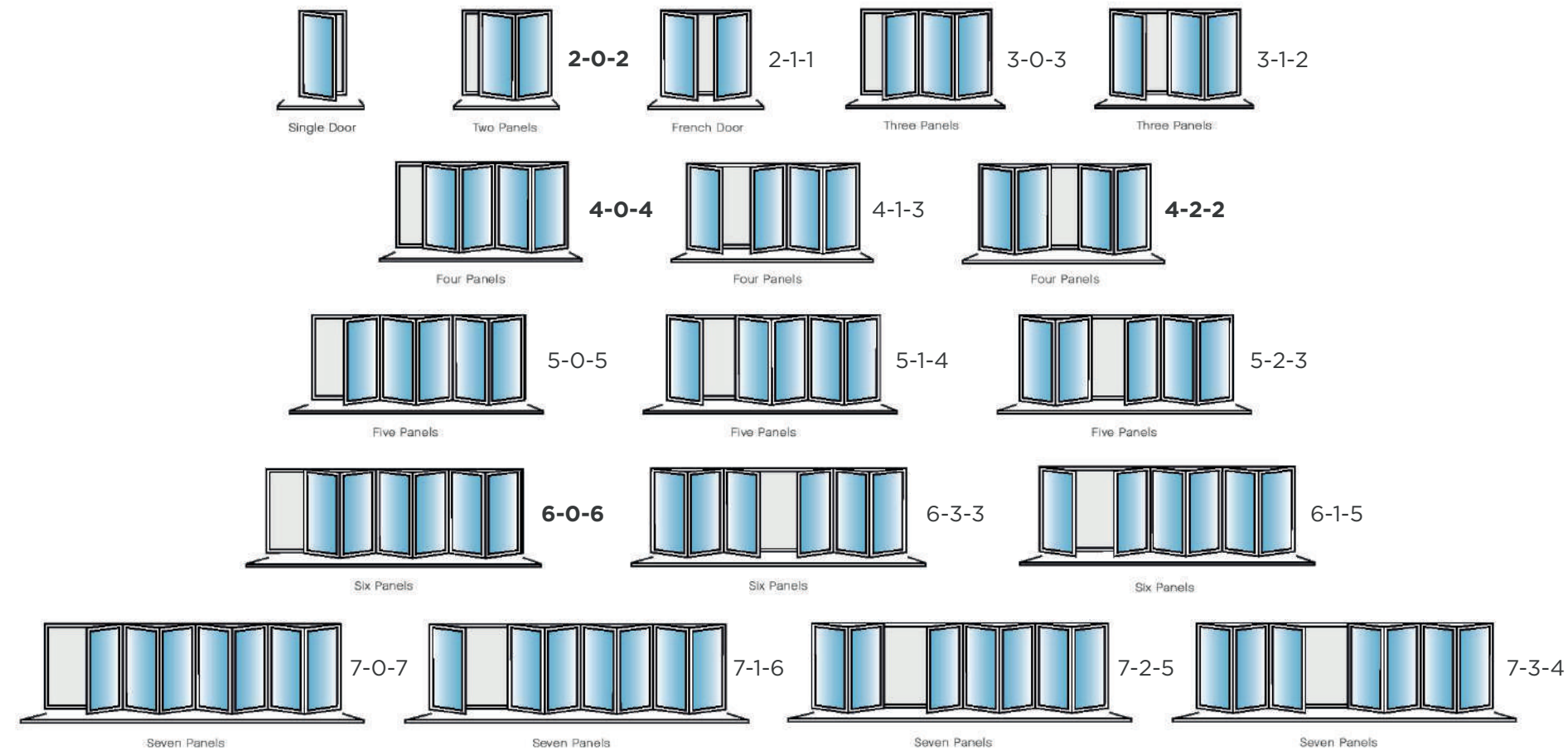
SLIDING DOORS

CONSIDER IF...

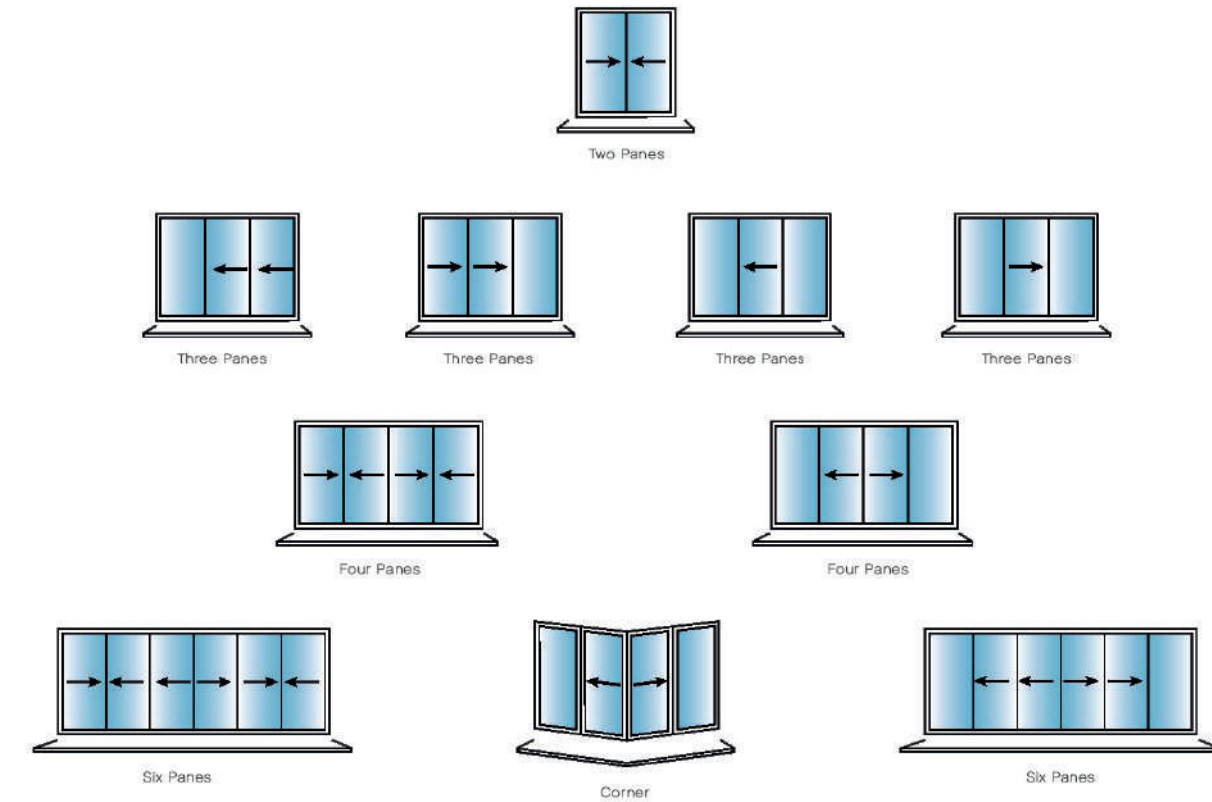
- It's important to have a higher glass to frame ratio. You can fit more glass in a sliding door than you can bi-folds.
- If there are strict thermal value requirements.
- You have limited space - sliding doors don't need the same space that bi-folds need when they are folded back.

Bi-folding doors feature multiple door leaves which concertina to one or both sides of the frames. Bi-folding doors are available with a Master Door which can be used as an access door alone without having to fold back all the other doors.

***please note the configurations in bold have no option for an external access or traffic door.**



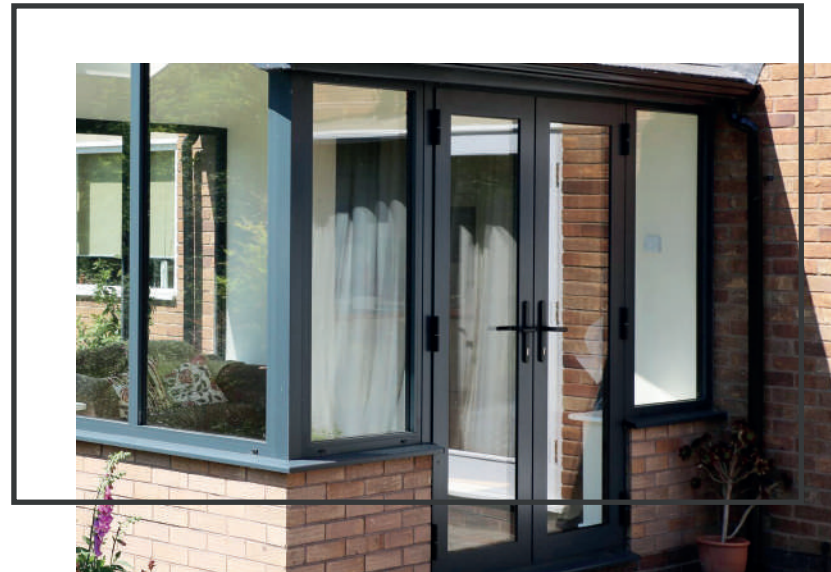
Sliding doors open and close in line with the large panes stacked one behind the other.



This is just an example of designs, please speak to us about further design options.

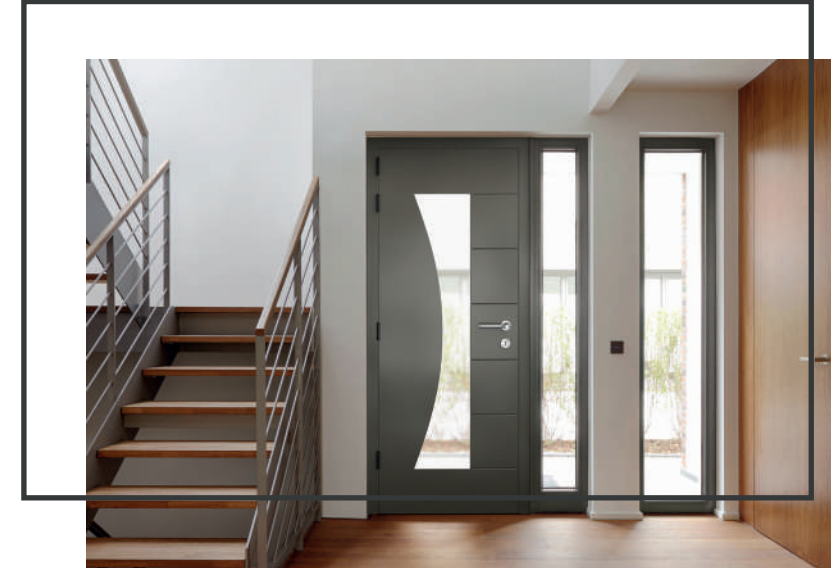


HIGH PERFORMANCE SINGLE & DOUBLE DOORS

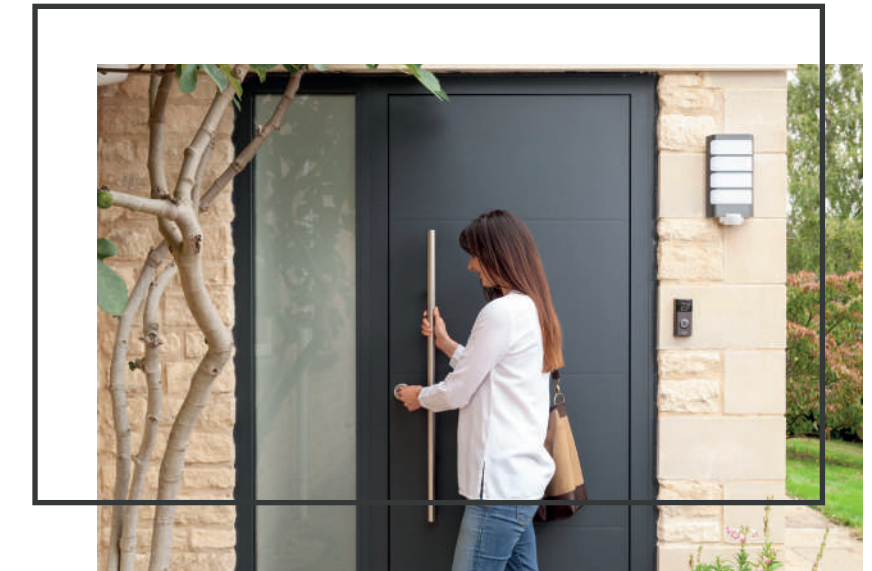


Opal Ornate is a range of high performance residential single and double doors that offer homeowners quality assurance and peace of mind. These doors will impress your guests and keep out intruders. Elegant, yet strong and durable Opal Ornate doors enhance the beauty of the home and keep in the warmth. Available in a range of designs and colour finishes.

Single or Double Door Max Width - 1000mm per sash
 Single or Double Door Max Height - 2500mm per sash
 Max Weight - 100kg per sash



ULTIMATE DESIGNER ENTRANCE DOOR



Opal Opulence is our most prestigious door which offers a wide range of designs, colours and styles to choose from. Whichever door you choose for the property, you can be sure of its outstanding performance, with high-quality locking mechanisms and precision construction combining to give unbeatable strength and security. You can choose from a range of designs and our extensive range of colours guarantees the perfect finishing touch.

High quality 10-point locking mechanism provides outstanding security.



HARDWARE & UPGRADES

Door furniture will have a major impact on the overall appearance of your doors and windows. All our windows and doors come with a standard choice of handles and hardware which are fully compliant and of high quality providing excellent security. However, you can also choose to upgrade to our range of BLU™ hardware should you want that something a little different or high-end.



White

Satin Silver

Polished Chrome

Black

WINLOCK WINDOW HANDLES - STANDARD ON ALL WINDOWS



UK HARDWARE



UPGRADE BLU™ - REGENT



Pewter



Black

UPGRADE - MONKEYTAIL

*Monkeytail casement stays also available but only on Opal Heritage



We offer a range of upgrades from the **BLU™ performance range**. They are designed and manufactured to the highest standards of 316 Marine Grade satin stainless steel to withstand the most challenging environments - particularly coastal locations where corrosion is a major issue.



UPGRADE - BLU™ - CONTEMPORARY & OPERA



White



Satin Silver



Polished Chrome



Black

LEVER LEVER HANDLES - STANDARD ON ALL DOORS



STANDARD SHOOTBOLT



BLU™ ERGONOMIC UPGRADE



BLU™ SHOOTBOLT UPGRADE



Black or white



Polished Chrome

'D' HINGE HANDLE - STANDARD ON BI-FOLDS



STANDARD PULL HANDLE

black, white or satin chrome



BLU™ PULL UPGRADE



BLU™ LIFT & SLIDE UPGRADE

*only available on lift & slide doors



ENTRANCE DOOR BLU™ UPGRADES



ENTRANCE T-BAR PULL HANDLE

available in various lengths.

BLU™ upgrade available

SECURITY & LOCK UPGRADES

The standard locking mechanisms & hardware used by us are already fully compliant with current regulations and of a high quality providing excellent security. However, here is the option to enhance security should you choose to do so by upgrading to a Ultion Lock. The moment that Ultion detects forced entry it activates an attack lock directly into the central cam, this is 'Lock Down Mode'. Even if the most determined intruder gets past Ultion's two sacrificial sections they won't get to the attack lock because it is protected deep inside a solid molybdenum core and secured with a dedicated retaining pin.

ULTION 

Ultion has passed all major British standards test for security. It meets the highest TS007 standard (3 star) without needing to be bolstered with support of cylinder protectors or extra secure door handles. Sold Secure Diamond is a test developed in conjunction with The Master Locksmith Association. Test's designed by locksmiths.



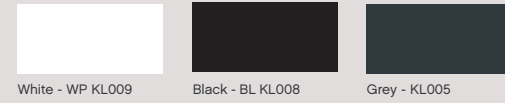
All our door systems are available with a Ultion Lock upgrade

The Ultion lock comes with a £1000 Snap Guarantee. Should a burglary take place within 10 years from the point of installation and entry was achieved by snapping an Ultion lock, they will pay you the homeowner £1000.

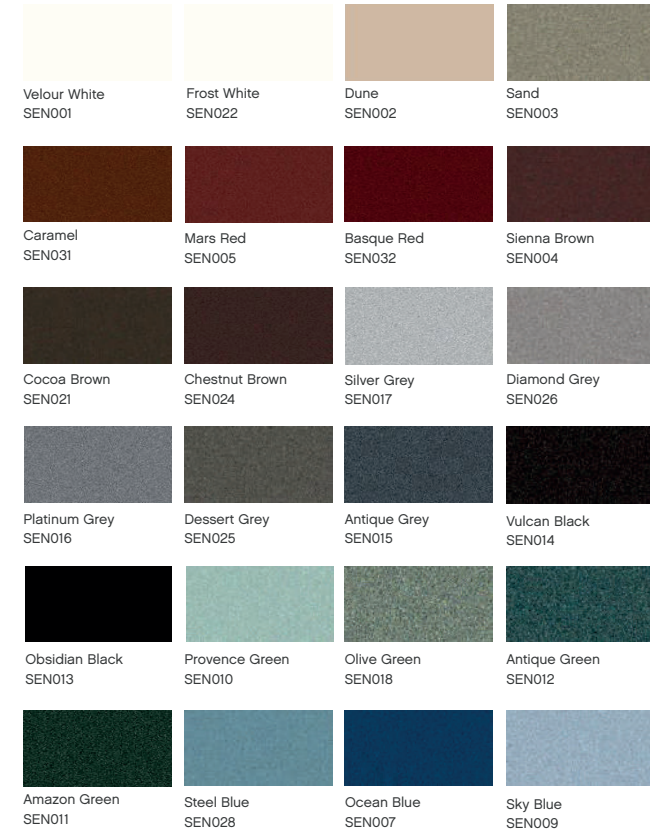
To activate the guarantee, they will need to complete registration within 28 days of the doors being installed.

| LIFE IS BETTER IN COLOUR

STANDARD COLOURS



SENSATIONS



COTSWOLD



NATURALS



ALCHEMY



Ask to see our swatches!

Although the colours in this brochure are accurate, they are only for illustrative purposes and not 100% binding in colour.



OPAL

ALUMINIUM WINDOWS AND DOORS

 Opal Aluminium

 @opalaluminium

WWW.PREFIXSYSTEMS.CO.UK/OPAL