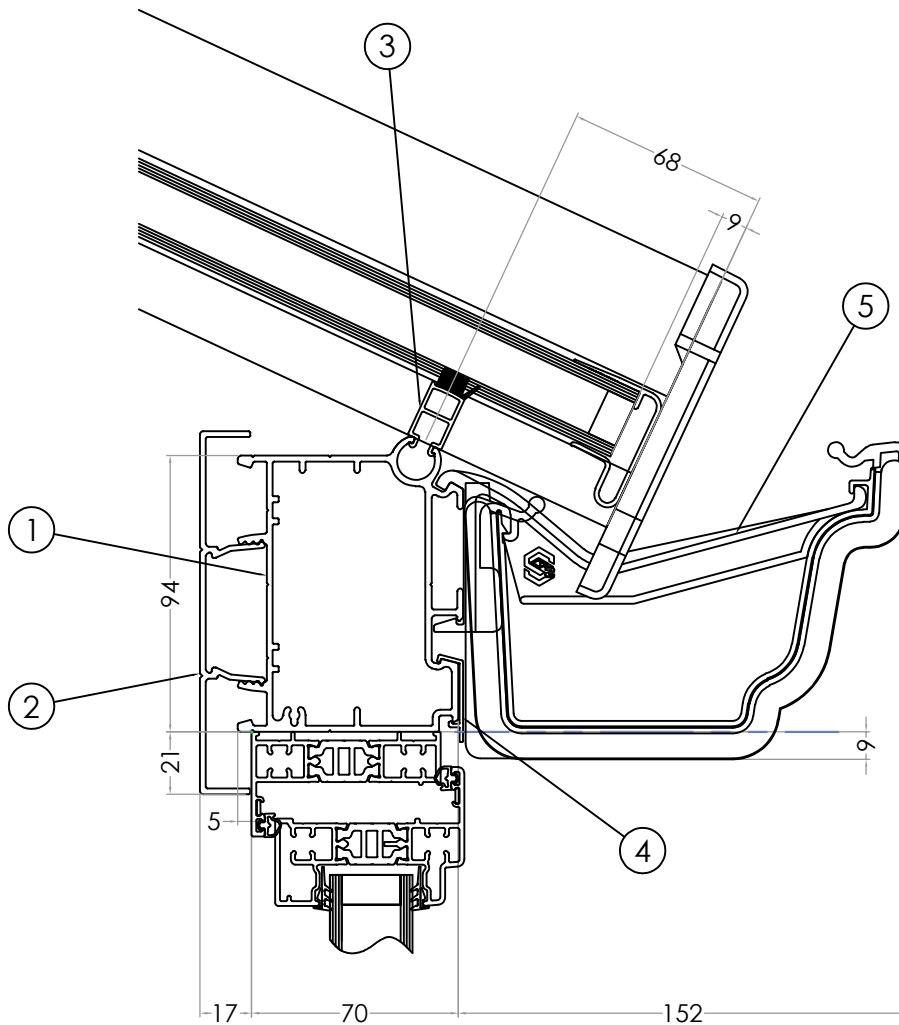


EAVES BEAM

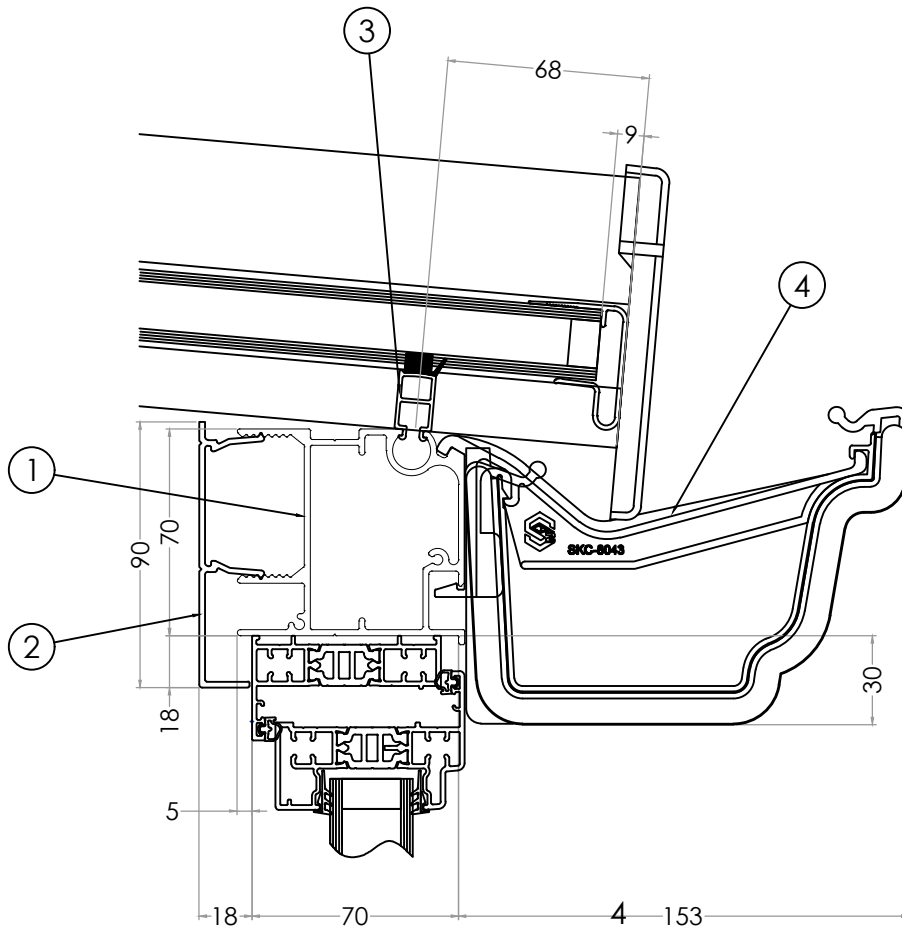


- |   |          |                           |
|---|----------|---------------------------|
| 1 | SKA-5164 | Eaves Beam                |
| 2 | SKP-6042 | Universal Internal Cover  |
| 3 | SKP-6056 | Eaves Beam Closure        |
| 4 | SKP-6024 | Eaves Beam External Trim  |
| 5 | SKC-8043 | Eaves Beam Gutter Bracket |

DO NOT SCALE FROM THIS DRAWING

01

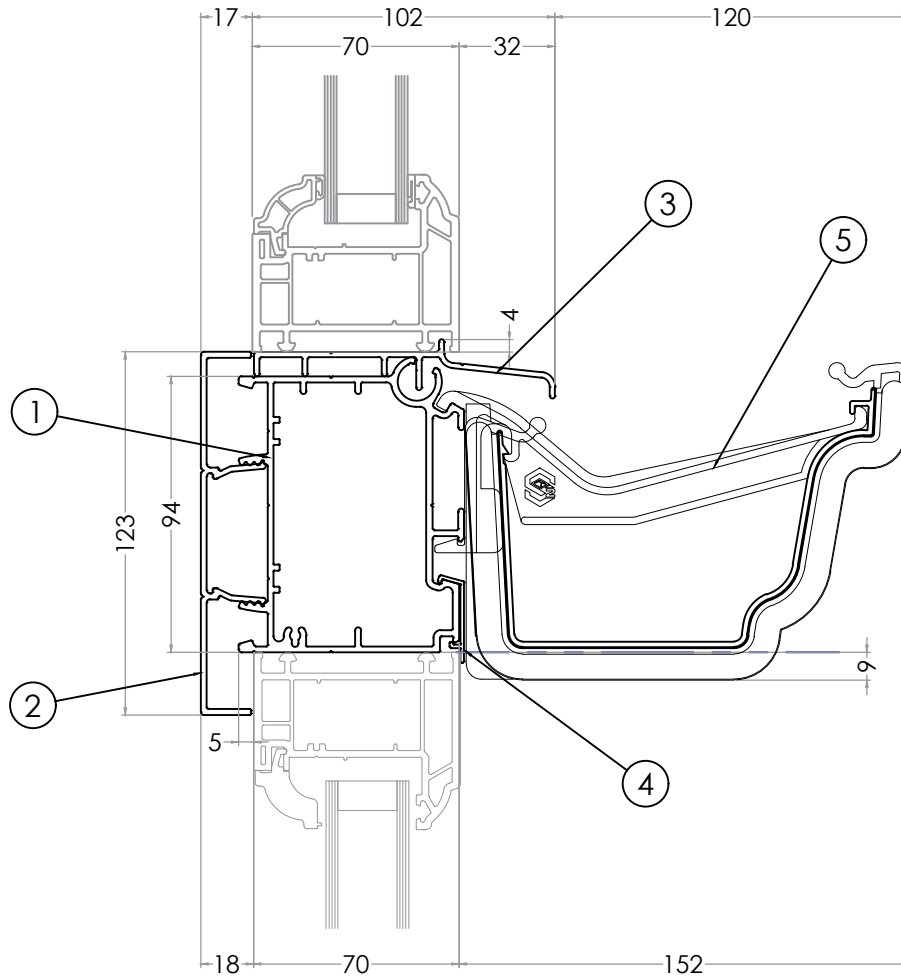
LOW PITCH EAVES BEAM



- |   |          |                            |
|---|----------|----------------------------|
| 1 | SKA-5030 | Low Pitch Eaves Beam       |
| 2 | SKP-6032 | Low Pitch Eaves Beam Cover |
| 3 | SKP-6056 | Eaves Beam Closure         |
| 4 | SKC-8043 | Eaves Beam Gutter Bracket  |

DO NOT SCALE FROM THIS DRAWING

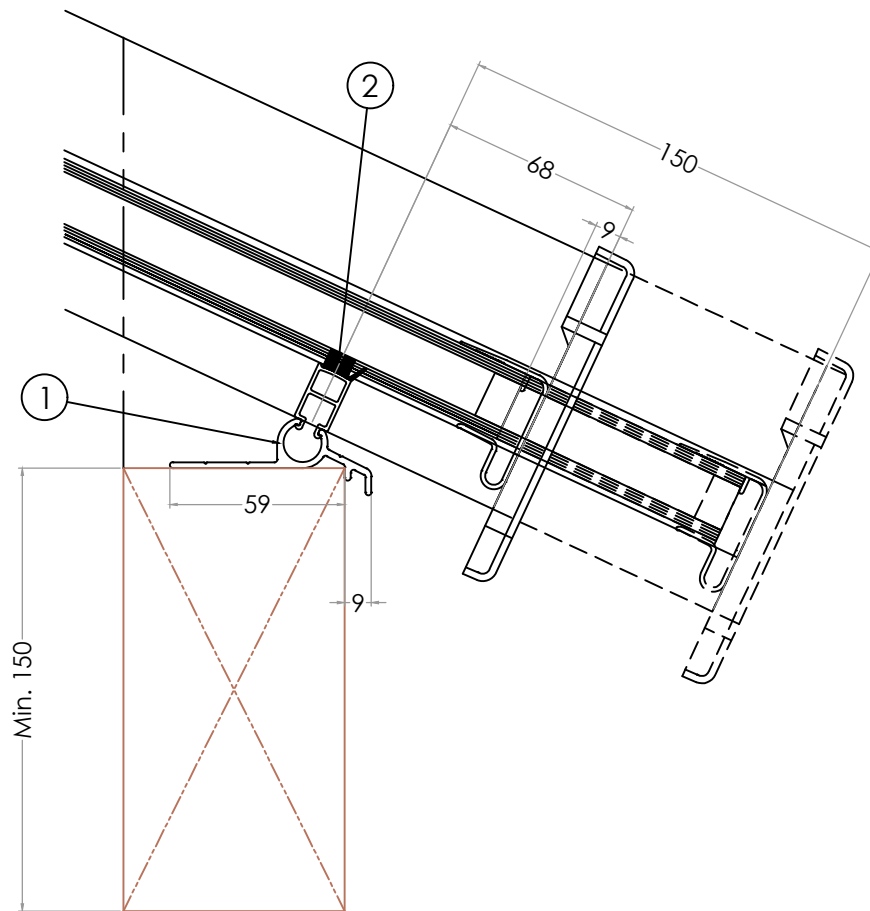
EAVES BEAM GABLE ADAPTOR



- |   |          |                           |
|---|----------|---------------------------|
| 1 | SKA-5164 | Eaves Beam                |
| 2 | SKP-6042 | Universal Internal Cover  |
| 3 | SKA-5187 | Eaves Beam Gable Adaptor  |
| 4 | SKP-6024 | Eaves Beam External Trim  |
| 5 | SKC-8043 | Eaves Beam Gutter Bracket |

DO NOT SCALE FROM THIS DRAWING

EAVES BEAM PIVOT ADAPTOR

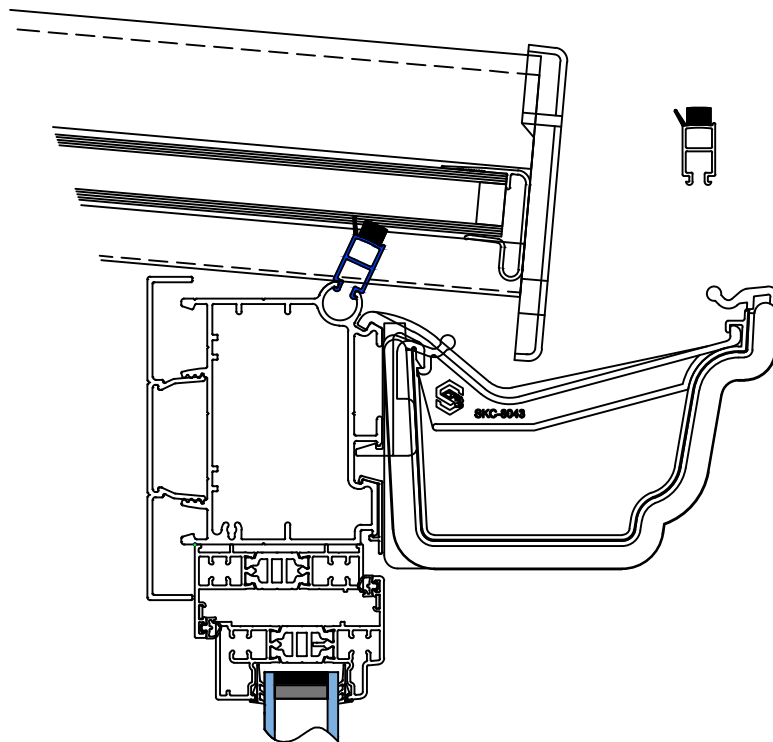


- |   |          |                          |
|---|----------|--------------------------|
| 1 | SKA-5149 | Eaves Beam Pivot Adaptor |
| 2 | SKP-6056 | Eaves Beam Closure       |

When using the pivot adaptor, dimensions should be taken from external kerb.  
 Glazing bar overhangs can be increased (on request) for additional weather protection of kerb. If eaves beam pivot adaptor is used on a lantern roof, a minimum kerb height of 150mm is required.

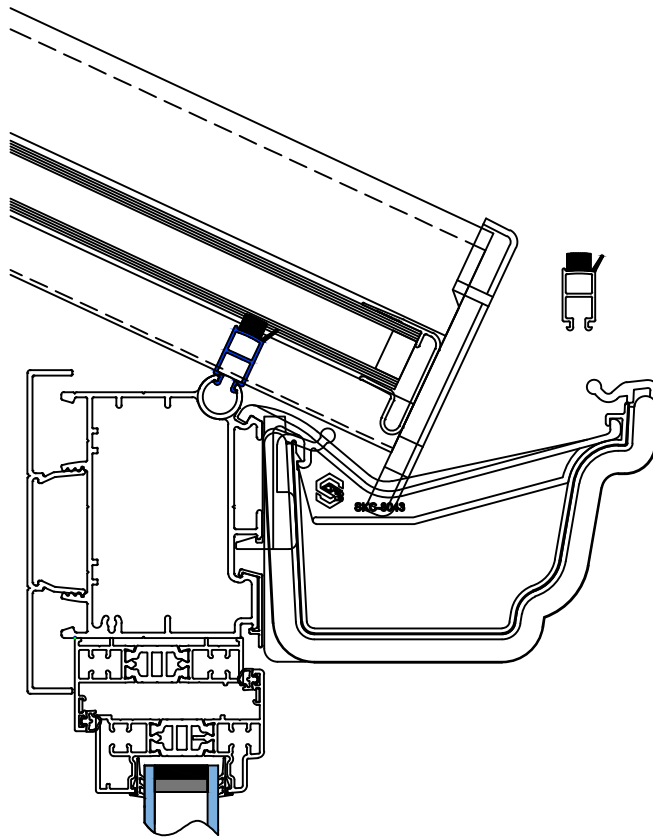
DO NOT SCALE FROM THIS DRAWING

EAVES BEAM END CLOSURE



SKP-6056 Eaves Closure

To be fitted with gasket fin facing outwards on 15.1>35° Pitched Roofs



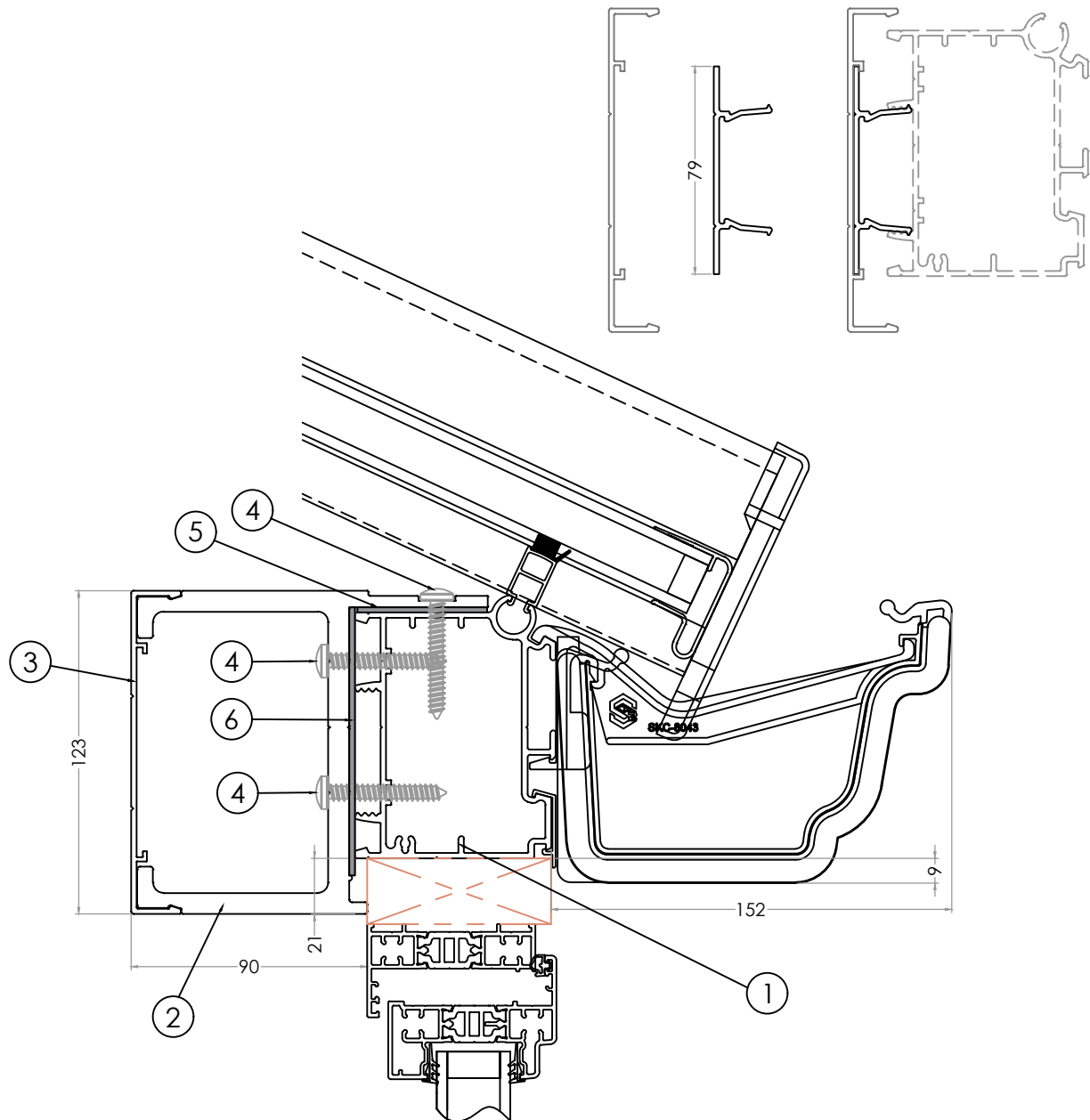
SKP-6056 Eaves Closure

To be fitted with gasket fin facing outwards on 15.1>35° Pitched Roofs

DO NOT SCALE FROM THIS DRAWING

BOLSTERED EAVES BEAM

SKP-6108  
Eaves Beam Bolster Cover Adaptor



- |   |          |   |
|---|----------|---|
| 1 | SKA-5164 | Eaves Beam                                    |
| 2 | SKA-5200 | Eaves Beam Bolster                            |
| 3 | SKA-5201 | Eaves Beam Bolster Cover                      |
| 4 | SKC-9132 | 6.3mm x 45mm Pan Head Torx Self Tapping Screw |
| 5 | SKC-9622 | Eaves Bolster Thermal Break (52mm x 1250mm)   |
| 6 | SKC-9623 | Eaves Bolster Thermal Break (100mm x 1250mm)  |

Eaves Beam Bolster & Cover (aluminium) to allow for Increased spanning capability for large openings (Eaves & Bolster combination approximately 10 Kg/m).

Eaves Beam Bolster & Cover - powder coated to suit.

Eaves Beam Bolster Cover - can be used to create aluminium internal cladding

DO NOT SCALE FROM THIS DRAWING

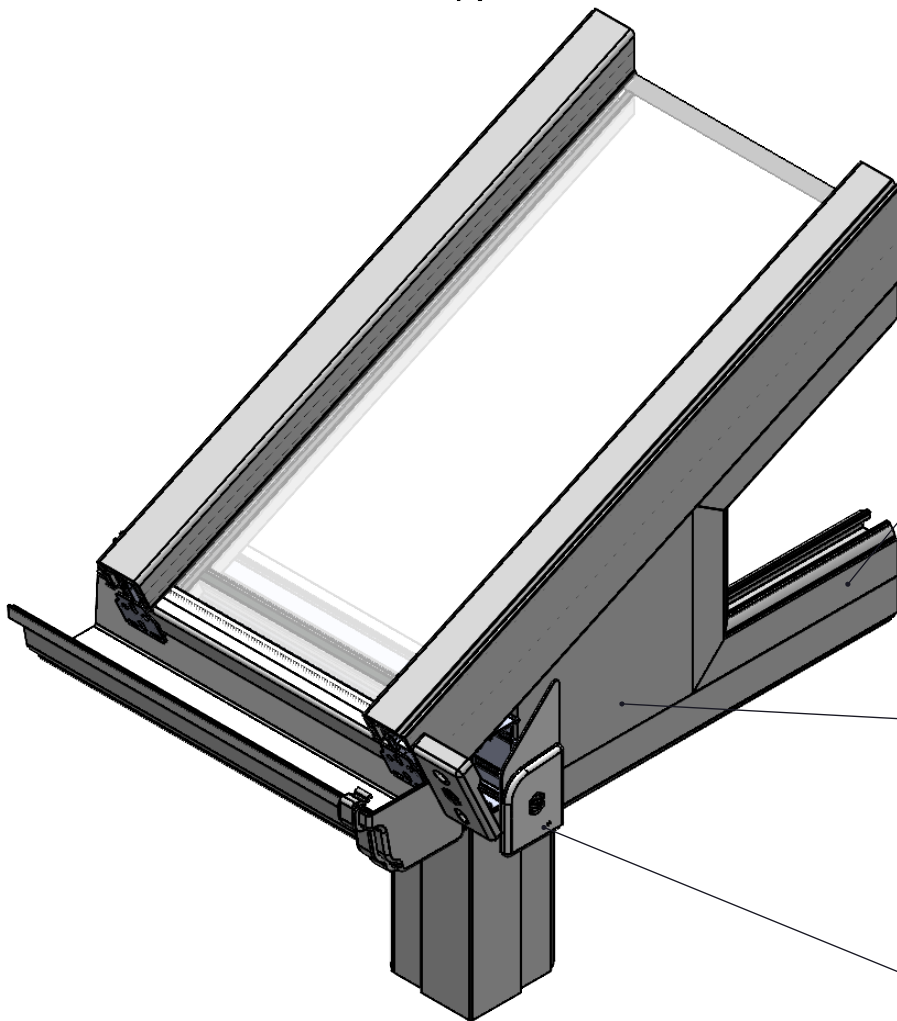
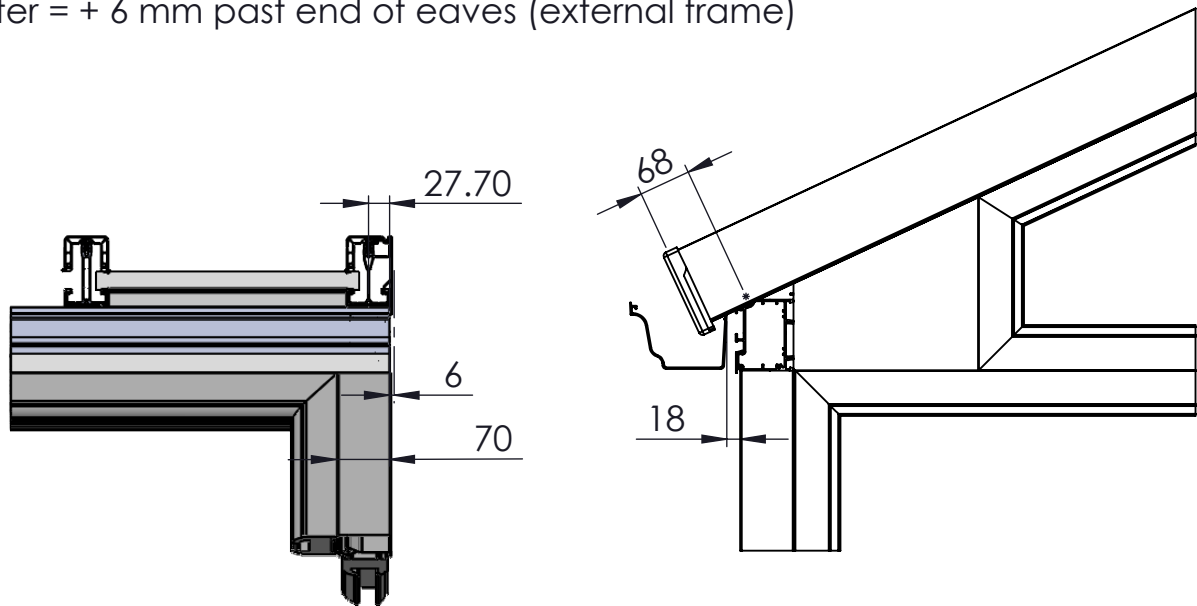
GABLE END ASSEMBLY

Eaves Beam = Internal frame +70mm

Eaves Beam Internal Cladding (SKP-6042) = Up to Gable End Int. Frame

Glazing Bar Centre = 27.7 mm back from end of eaves (external frame).

Gutter = + 6 mm past end of eaves (external frame)



Gable Frame (by others)

A wedged shaped infill piece (by others), should be attached to the front eaves section and to the end of the gable frame where gable frames cannot be manufactured to opening size. The end bar will fix down onto the gable frame and the wedge infill.

Eaves Beam End Cap Cover (SKC-9117) trimmed on top edge to suit roof pitch and secured in position by Installer using 3.9 x 25mm CSK Self Drilling Screw (SKC-8019), Screw Washer & Cover Cap (SKC-7004) supplied.

**Do Not Scale From This Drawing**

GABLE END RETURN EAVES & GUTTER

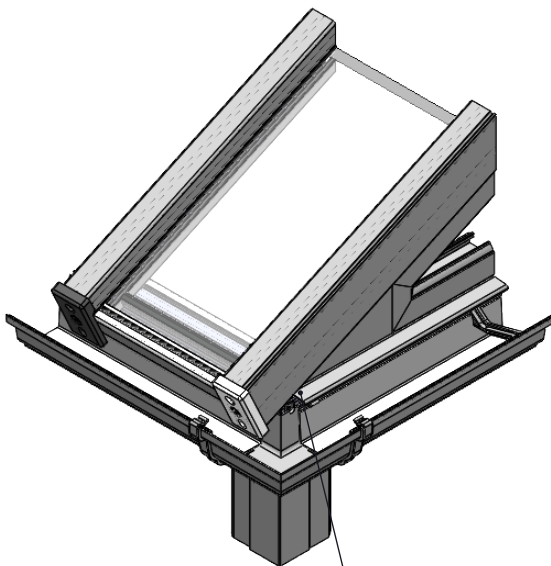
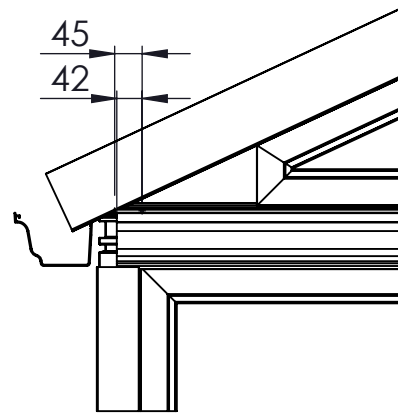
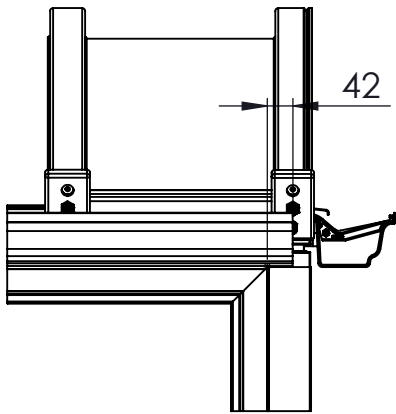
Where eaves and gutter return across a gable end, eaves is mitred at internal frame.

Internal cladding offsets = Internal Frame - 22mm as per standard Int. 90° detail.

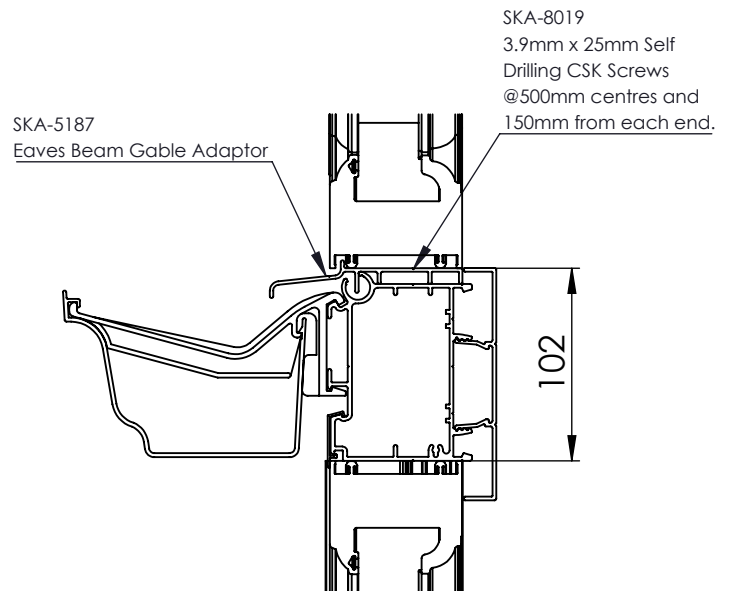
Starter Bar  $\varnothing$  = Int. Frame + 42mm.

Gutter Length = Int. Frame + 42mm per corner (deduction for 90° external gutter corner).

Eaves Gable Adaptor = Int Frame + 45mm (per corner)



SKA-5187 Gable Adaptor may require notch around starter bar fascia trim.

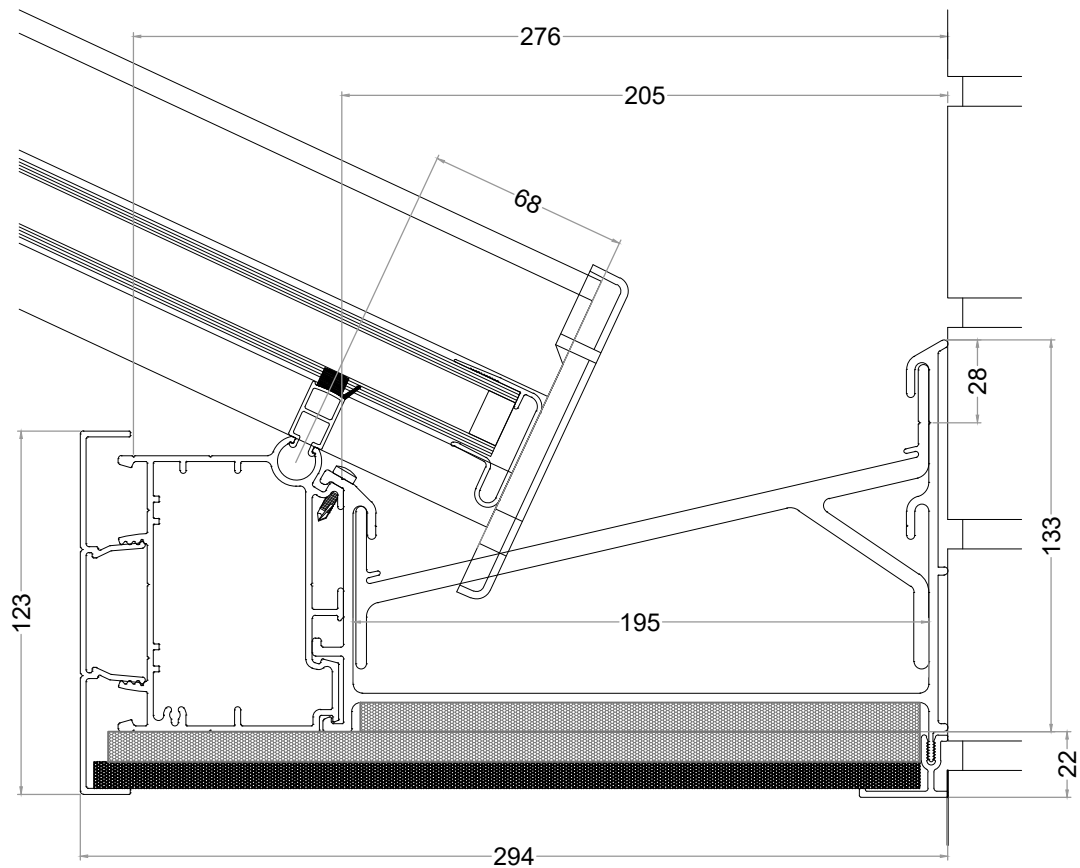


Section through Gable End

**Do Not Scale From This Drawing**



205mm BOX GUTTER



SKA- 5164  
Eaves Beam

SKP-6075  
Box Gutter Soffit Trim

SKP-6042  
Universal Internal Cover

SKC-8061  
195mm Box Gutter Insulation

SKA-5185  
205mm Box Gutter

SKC-9498  
275mm Box Gutter Insulation

SKC-9435  
205mm Box Gutter Brace

SKP-0018-300  
Box Gutter Cladding

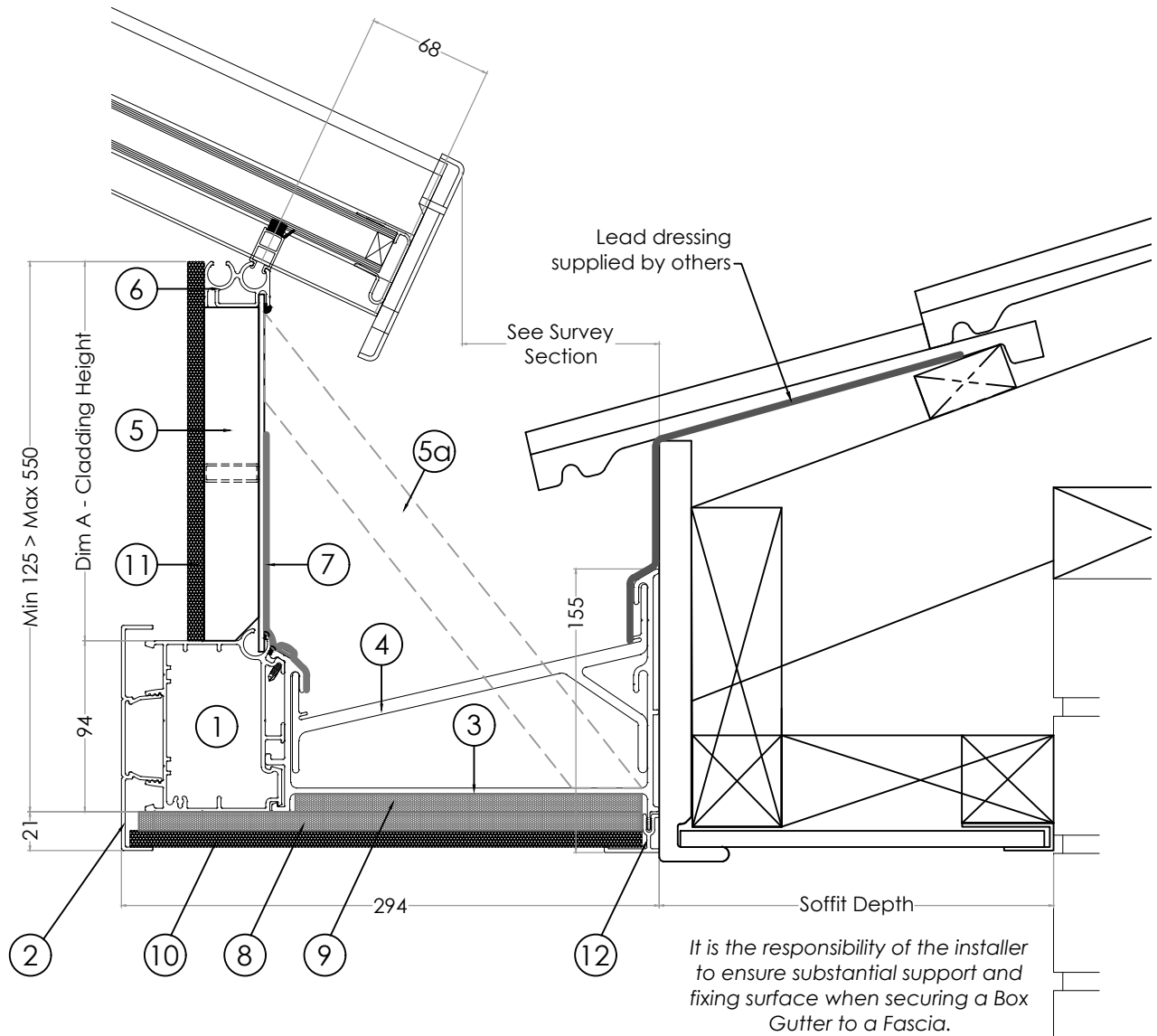
Box Gutter Braces fitted approximately 150mm in from each end then at maximum 600mm centers.

*(NB Ensure Box Gutter Braces must be slid into the Box Gutter prior any welding.)*

It is the responsibility of the installer to ensure adequate support and suitable fixings when fixing Box Gutter to substrate.

DO NOT SCALE FROM THIS DRAWING

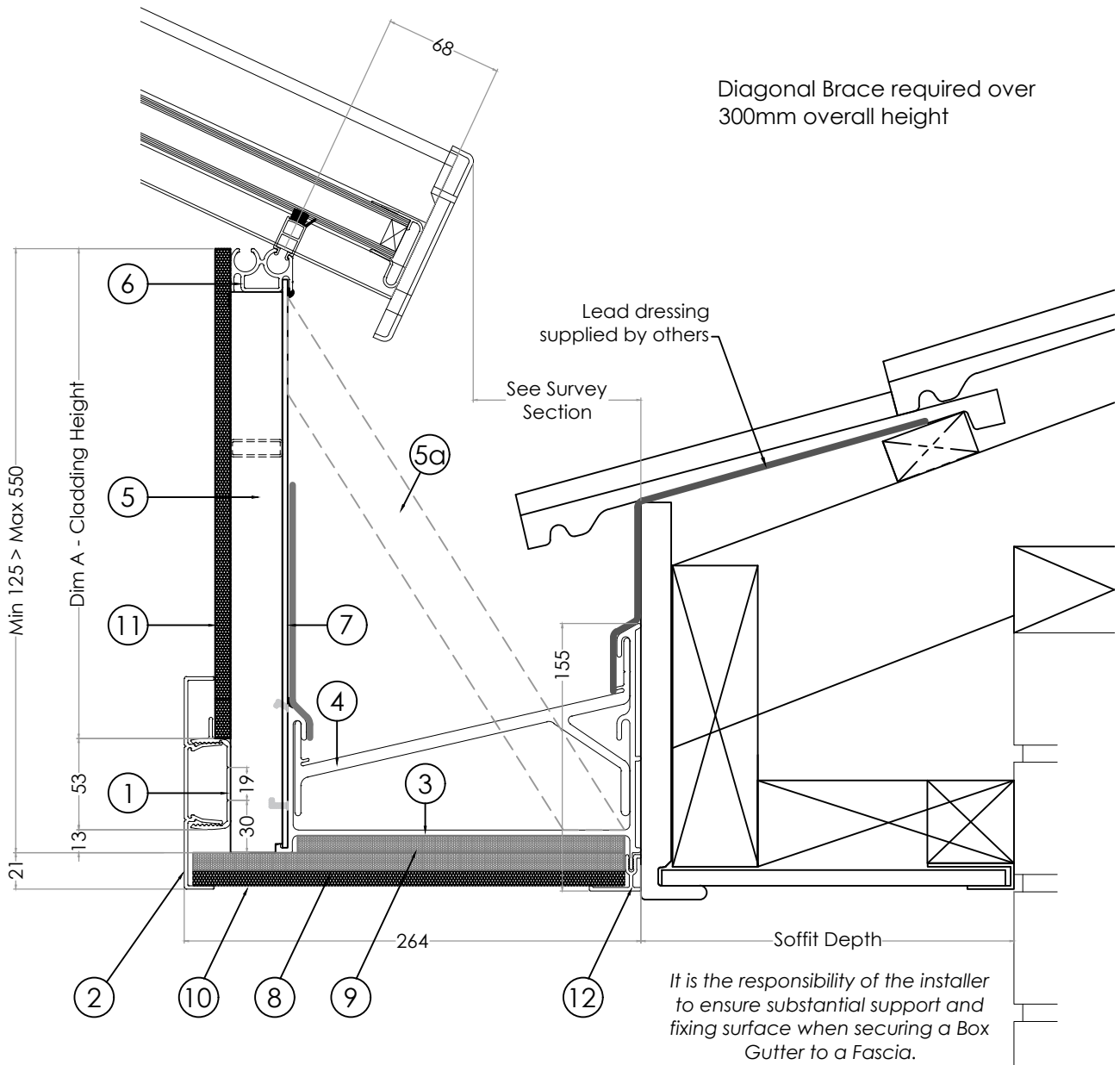
HIGHBACK BOX GUTTER ASSEMBLY



- |    |          |   |
|----|----------|---|
| 1  | SKA-5164 | Eaves Beam  |
| 2  | SKP-6042 | Universal Internal Cover Trim                               |
| 3  | SKA-5185 | 205mm Box Gutter  |
| 4  | SKC-9435 | 205mm Box Gutter Brace                                      |
| 5  | SKA-5074 | High back Box Gutter Reinforcement (5a required over 400mm) |
| 6  | SKA-5188 | High back Box Gutter Bolt Rail                              |
| 7  | --       | 3mm Aluminum Plate  |
| 8  | SKC-9498 | 275mm Box Gutter Insulation                                 |
| 9  | SKC-8061 | 195mm Box Gutter Insulation                                 |
| 10 | SKP-0018 | 9mm Utility Board (280mm)                                   |
| 11 | SKP-0018 | 9mm Utility Board size to suit Dim A                        |
| 12 | SKP-6075 | Box Gutter Soffit Trim                                      |

DO NOT SCALE FROM THIS DRAWING

HIGHBACK BOX GUTTER ASSEMBLY

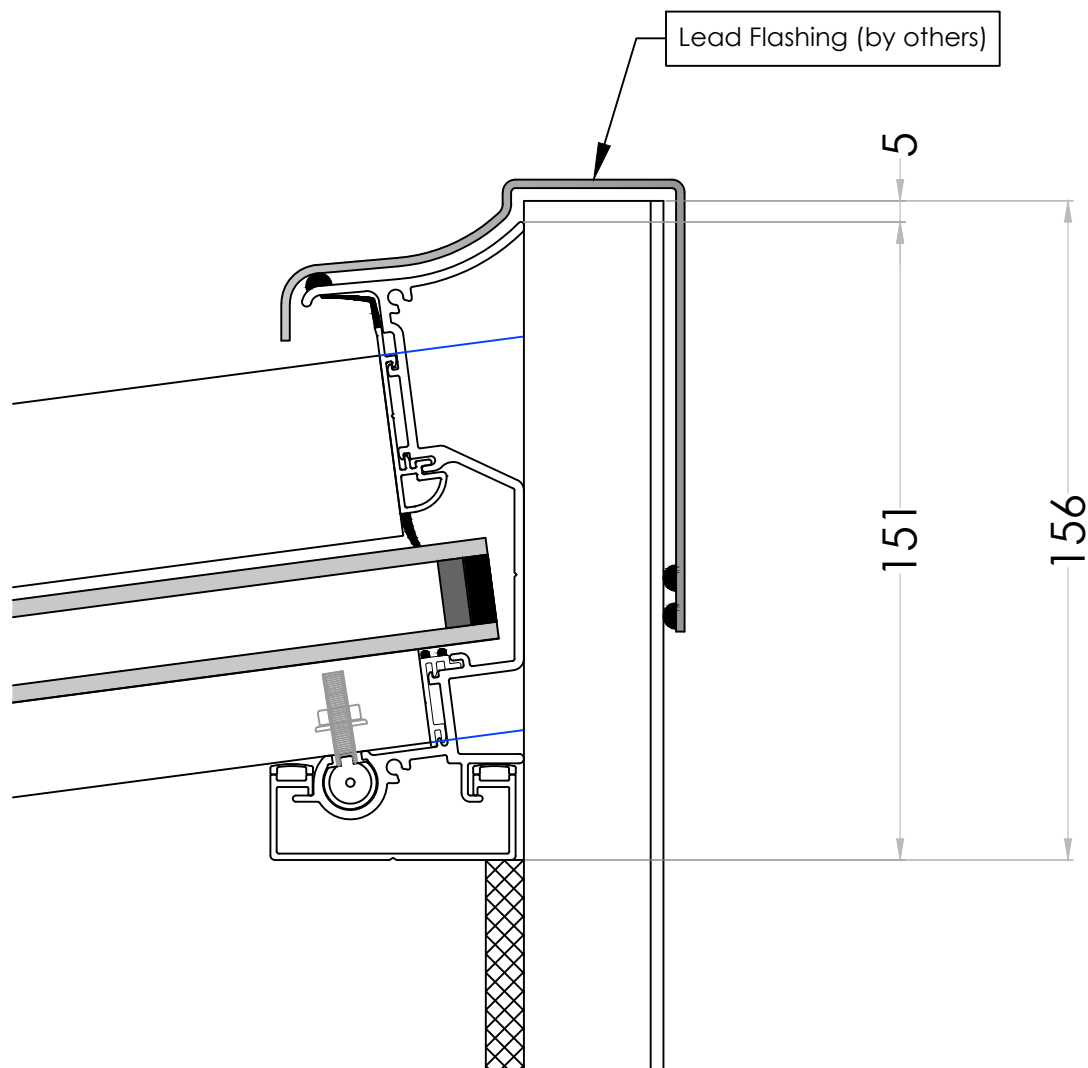


- 1 - SKA-5148 Universal Cover Adaptor
- 2 - SKP-6042 Universal Internal Cover
- 3 - SKA-5185 205mm Box Gutter
- 4 - SKC-9435 205mm Box Gutter Brace
- 5 - SKA-5074 Highback Box Gutter Reinforcement (*5a required over 400mm*)
- 6 - SKA-5188 Highback Box Gutter Bolt Rail
- 7 - 3mm Aluminum Plate
- 8 - SKC-9498 275mm Box Gutter Insulation
- 9 - SKC-8061 195mm Box Gutter Insulation
- 10 - SKP-0018 9mm Utility Board (280mm)
- 11 - SKP-0018 9mm Utility Board (Size to suit Dim A)
- 12 - SKP-6075 Box Gutter Soffit Trim

DO NOT SCALE FROM THIS DRAWING



LEAN TO RAISED BOX GUTTER TO FASCIA CONTINUED



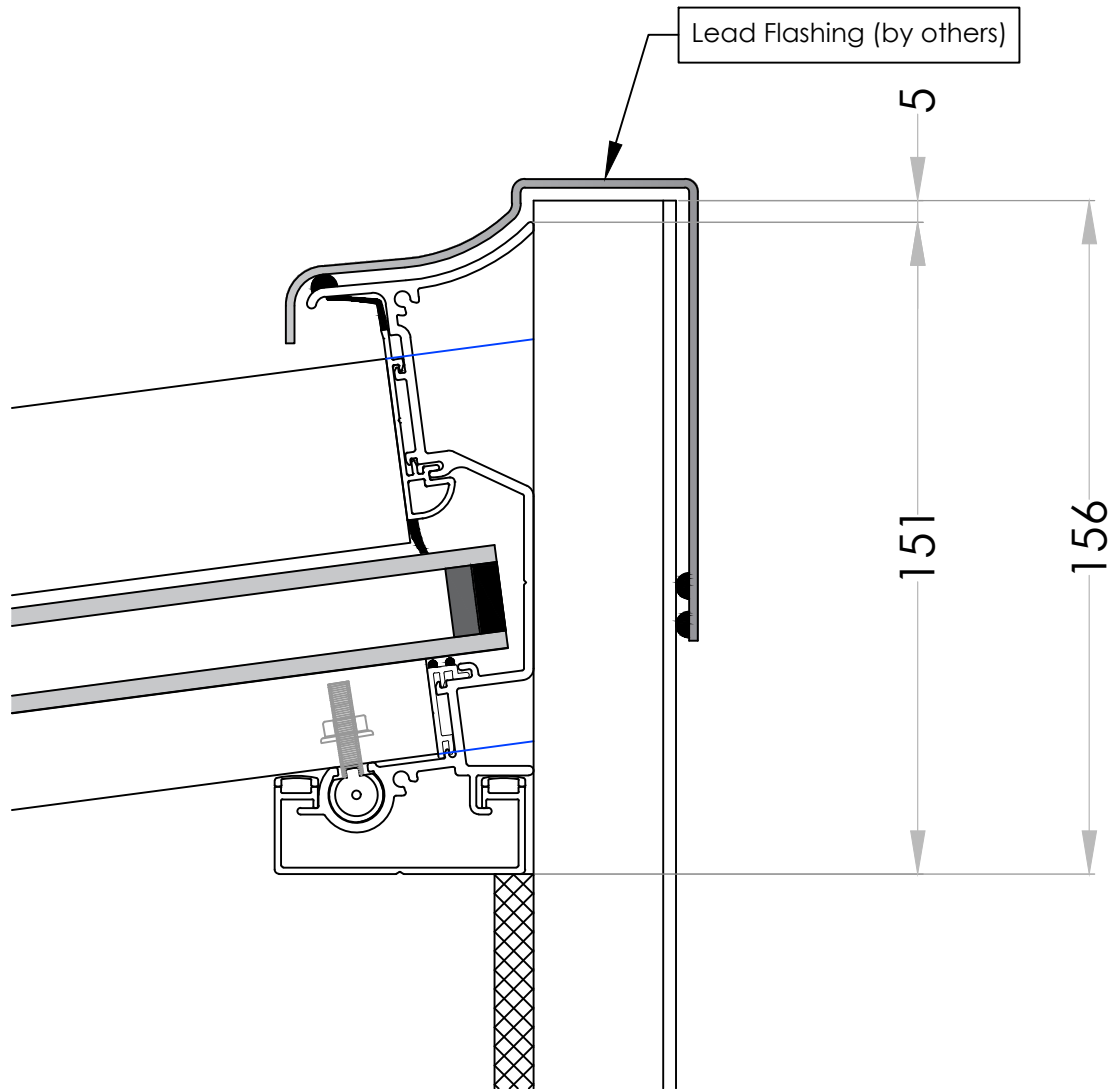
Box Gutter welded upstand to sit +5mm above top of wall plate for surface to stitch weld top edge of wall plate to reinforcement bars.

Wall Plate and box gutter to be flashed with lead and sealed by installer to ensure water tight.

DO NOT SCALE FROM THIS DRAWING

11  
CONTINUED

LEAN TO RAISED BOX GUTTER TO FASCIA CONTINUED



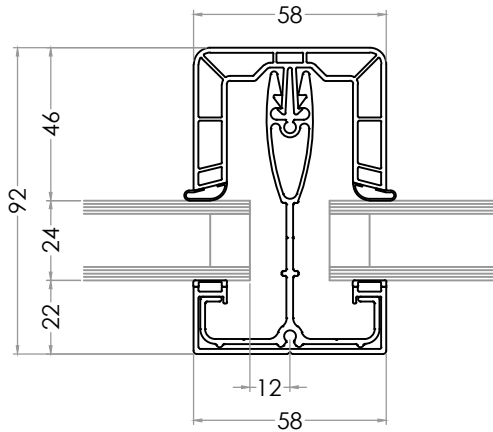
Box Gutter welded upstand to sit +5mm above top of wall plate for surface to stitch weld top edge of wall plate to reinforcement bars.

Wall Plate and box gutter to be flashed with lead and sealed by installer to ensure water tight.

DO NOT SCALE FROM THIS DRAWING

11  
CONTINUED

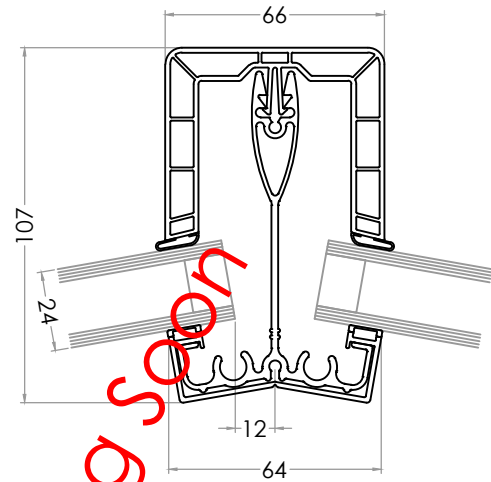
CHAMBERED CAPPINGS - STANDARD DUTY RAFTERS - 24/25mm GLAZING



SKP-6100 Square Standard Transom Top Cap

SKA-5020 Standard Transom

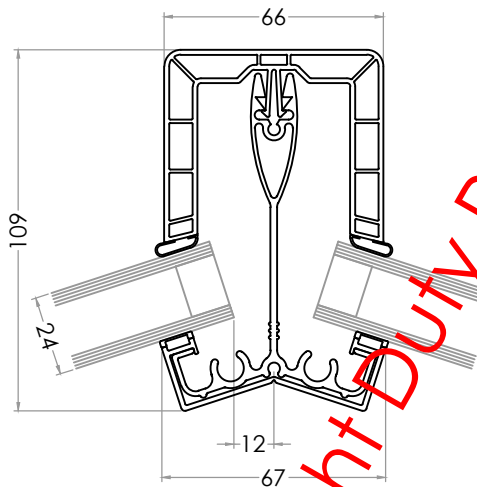
SKP-6000 Glazing Bar Bottom Cap



SKP-6101 Square Hip Top Cap

SKA-5114 Standard Victorian Hip

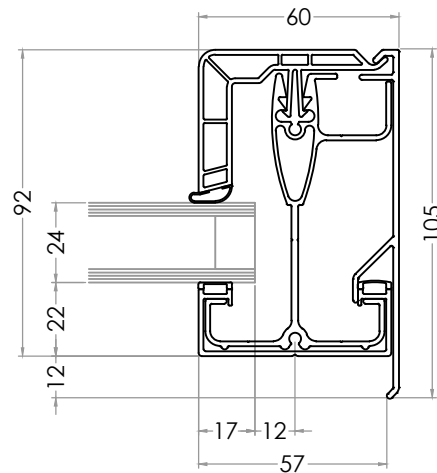
SKP-6000 Glazing Bar Bottom Cap



SKP-6101 Square Hip Top Cap

SKA-5115 Standard Georgian Hip

SKP-6000 Glazing Bar Bottom Cap



SKP-6102 Square Starter Bar Top Cap

SKA-5118 Standard Starter/Wall Bar

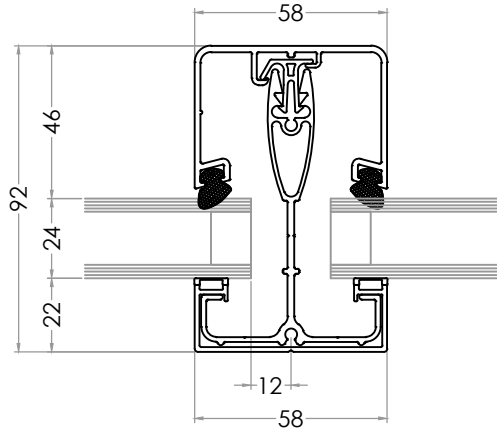
SKP-6000 Glazing Bar Bottom Cap

SKA-5156 Starter Bar Fascia Trim

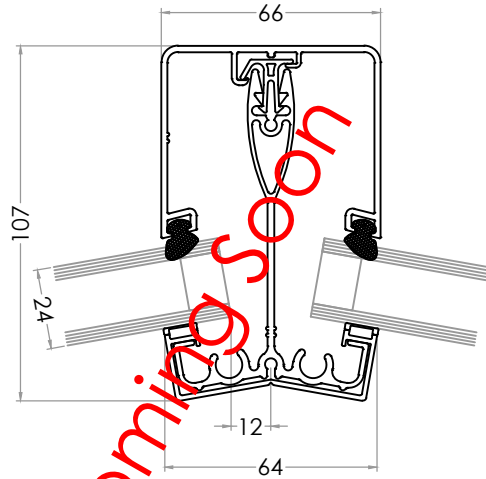
Light Duty Rafters Coming Soon

DO NOT SCALE FROM THIS DRAWING

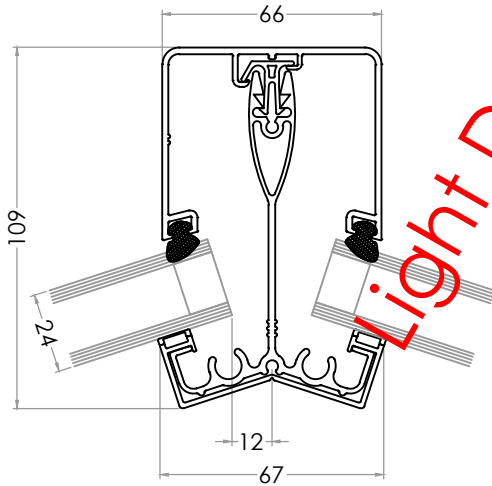
ALUMINIUM CAPPINGS - STANDARD DUTY RAFTERS - 24/25mm GLAZING



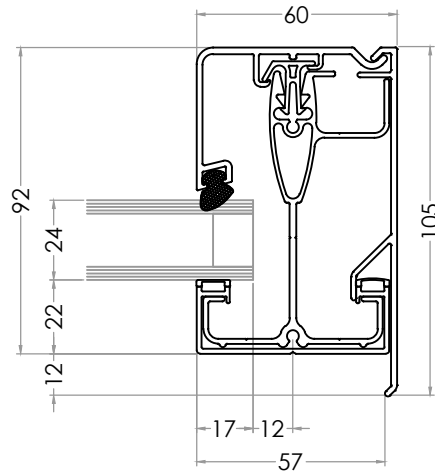
SKA-5113 24mm Square Transom Top Cap  
 SKP-9074 Glazing Bar Top Cap Connector  
 SKC-9060 Q-Lon Glazing Seal  
 SKA-5020 Standard Transom  
 SKP-6000 Glazing Bar Bottom Cap



SKA-5048 24mm Square Hip Top Cap  
 SKP-9074 Glazing Bar Top Cap Connector  
 SKC-9060 Q-Lon Glazing Seal  
 SKA-5114 Standard Victorian Hip  
 SKP-6000 Glazing Bar Bottom Cap



SKA-5048 24mm Square Hip Top Cap  
 SKP-9074 Glazing Bar Top Cap Connector  
 SKC-9060 Q-Lon Glazing Seal  
 SKA-5115 Standard Georgian Hip  
 SKP-6000 Glazing Bar Bottom Cap

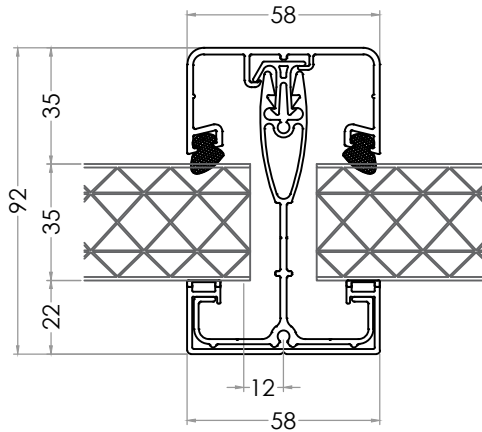


SKA-5126 24mm Square Starter Bar Top Cap  
 SKP-9074 Glazing Bar Top Cap Connector  
 SKC-9060 Q-Lon Glazing Seal  
 SKA-5118 Standard Starter/Wall Bar  
 SKP-6000 Glazing Bar Bottom Cap  
 SKA-5156 Starter Bar Fascia Trim

DO NOT SCALE FROM THIS DRAWING



ALUMINIUM CAPPINGS- STANDARD DUTY RAFTERS - 35mm POLYCARBONATE



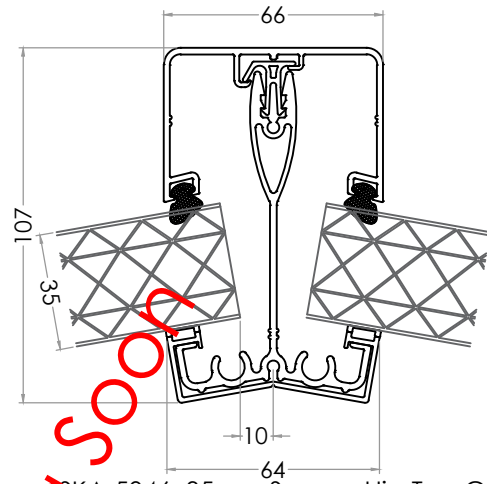
SKA-5112 35mm Square Transom Top Cap

SKP-9074 Glazing Bar Top Cap Connector

SKC-9060 Q-Lon Glazing Seal

SKA-5020 Standard Transom

SKP-6000 Glazing Bar Bottom Cap



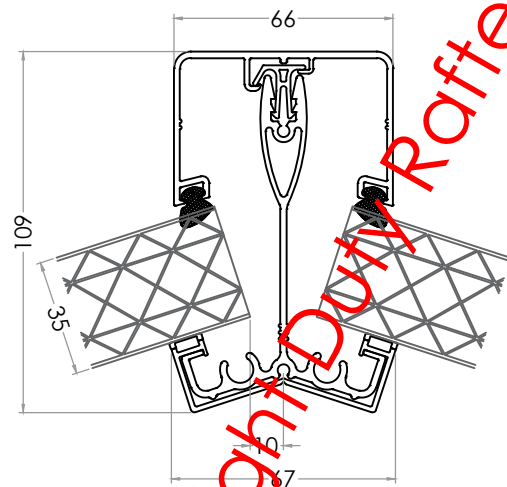
SKA-5046 35mm Square Hip Top Cap

SKP-9074 Glazing Bar Top Cap Connector

SKC-9060 Q-Lon Glazing Seal

SKA-5114 Standard Victorian Hip

SKP-6000 Glazing Bar Bottom Cap



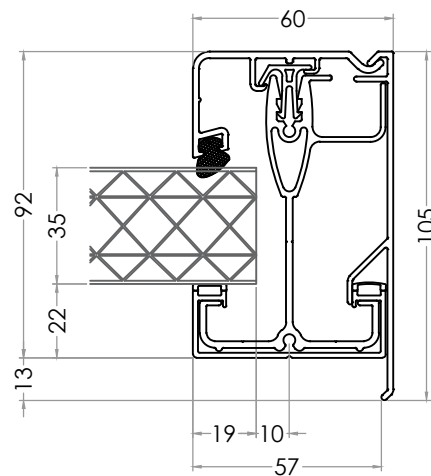
SKA-5046 35mm Square Hip Top Cap

SKP-9074 Glazing Bar Top Cap Connector

SKC-9060 Q-Lon Glazing Seal

SKA-5115 Standard Georgian Hip

SKP-6000 Glazing Bar Bottom Cap



SKA-5125 35mm Square Starter Bar Top Cap

SKP-9074 Glazing Bar Top Cap Connector

SKC-9060 Q-Lon Glazing Seal

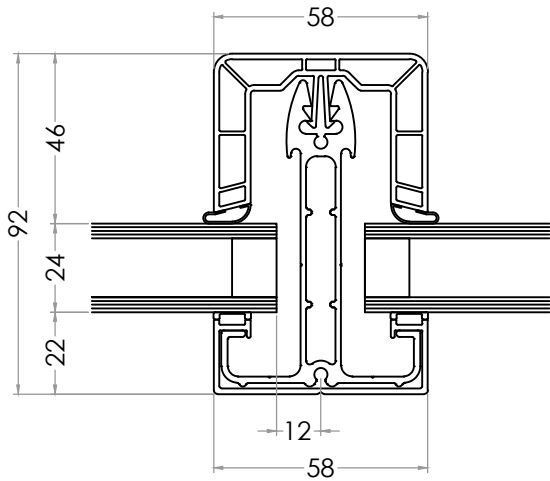
SKA-5118 Standard Starter/Wall Bar

SKP-6000 Glazing Bar Bottom Cap

SKA-5156 Starter Bar Fascia Trim

DO NOT SCALE FROM THIS DRAWING

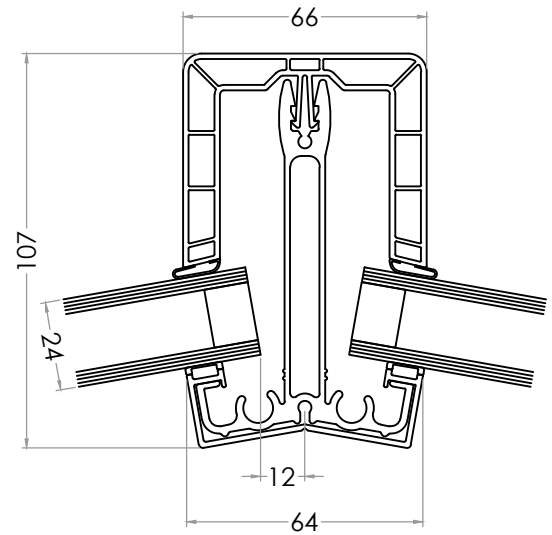
CHAMBERED CAPPINGS - HEAVY DUTY RAFTERS - 24/25mm GLAZING



SKP-6100 Square Standard Transom Top Cap

SKA-5025 Heavy Duty Transom

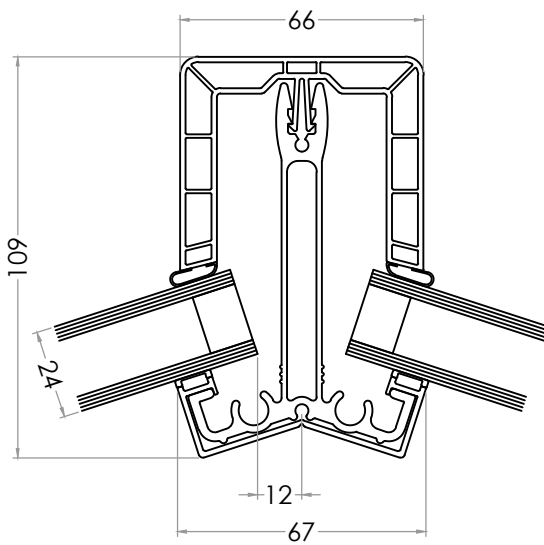
SKP-6000 Glazing Bar Bottom Cap



SKP-6101 Square Hip Top Cap

SKA-5116 Heavy Duty Victorian Hip

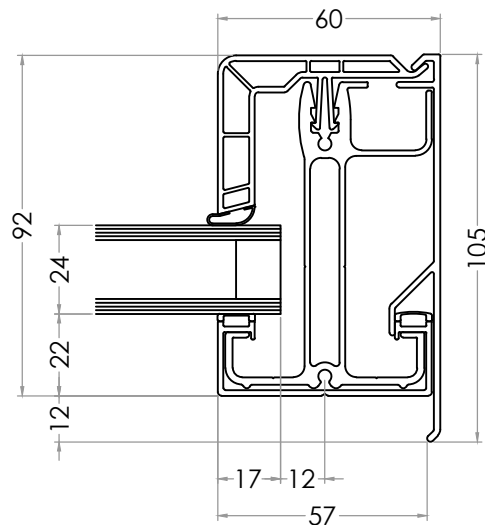
SKP-6000 Glazing Bar Bottom Cap



SKP-6101 Square Hip Top Cap

SKA-5117 Heavy Duty Georgian Hip

SKP-6000 Glazing Bar Bottom Cap



SKP-6102 Square Starter Bar Top Cap

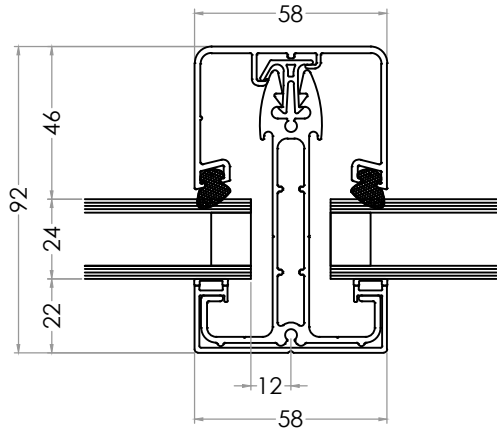
SKA-5119 Heavy Duty Starter/Wall Bar

SKP-6000 Glazing Bar Bottom Cap

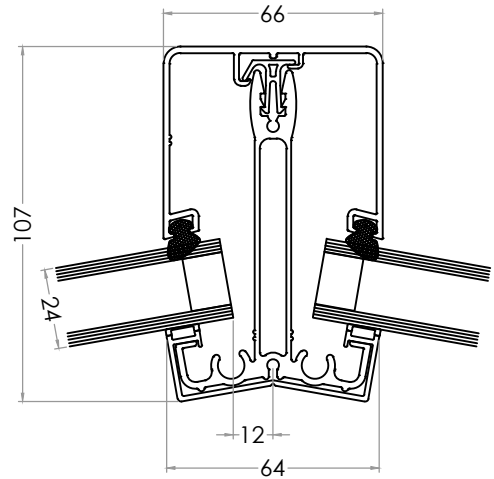
SKA-5156 Starter Bar Fascia Trim

DO NOT SCALE FROM THIS DRAWING

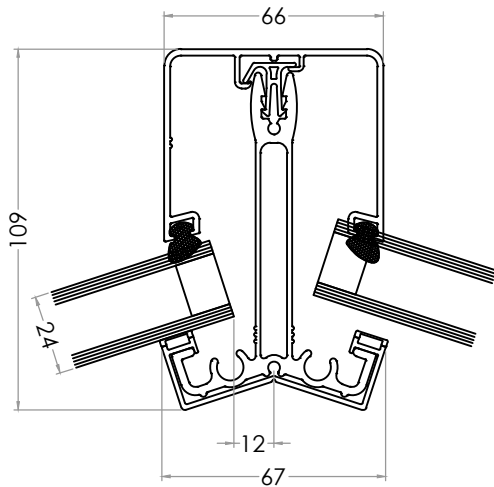
ALUMINIUM CAPPINGS - HEAVY DUTY RAFTERS - 24/25mm GLAZING



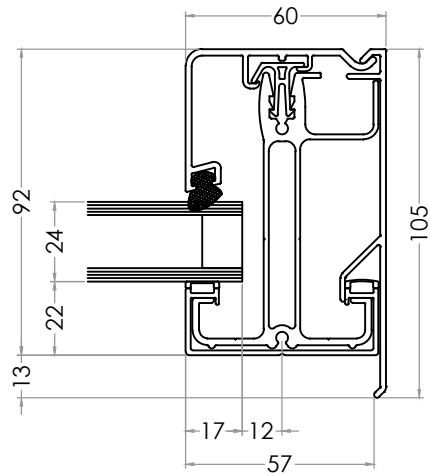
SKA-5113 24mm Square Transom Top Cap  
 SKP-9074 Glazing Bar Top Cap Connector  
 SKC-9060 Q-Lon Glazing Seal  
 SKA-5025 Heavy Duty Transom  
 SKP-6000 Glazing Bar Bottom Cap



SKA-5048 24mm Square Hip Top Cap  
 SKP-9074 Glazing Bar Top Cap Connector  
 SKC-9060 Q-Lon Glazing Seal  
 SKA-5116 Heavy Duty Victorian Hip  
 SKP-6000 Glazing Bar Bottom Cap



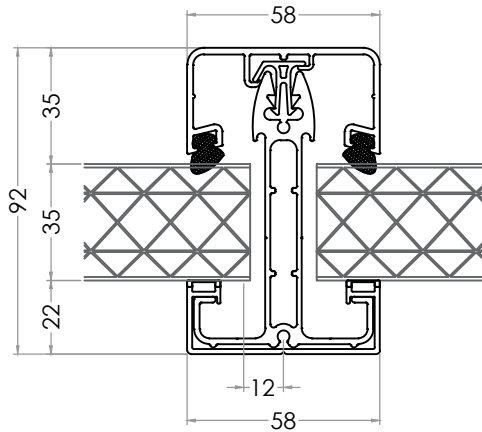
SKA-5048 24mm Square Hip Top Cap  
 SKP-9074 Glazing Bar Top Cap Connector  
 SKC-9060 Q-Lon Glazing Seal  
 SKA-5117 Heavy Duty Georgian Hip  
 SKP-6000 Glazing Bar Bottom Cap



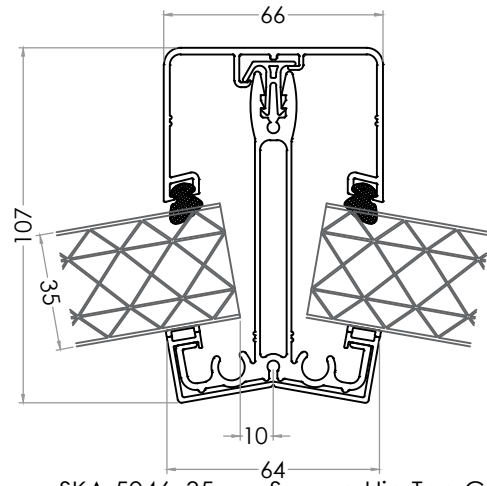
SKA-5126 24mm Square Starter Bar Top Cap  
 SKP-9074 Glazing Bar Top Cap Connector  
 SKC-9060 Q-Lon Glazing Seal  
 SKA-5119 Heavy Duty Starter/Wall Bar  
 SKP-6000 Glazing Bar Bottom Cap  
 SKA-5156 Starter Bar Fascia Trim

DO NOT SCALE FROM THIS DRAWING

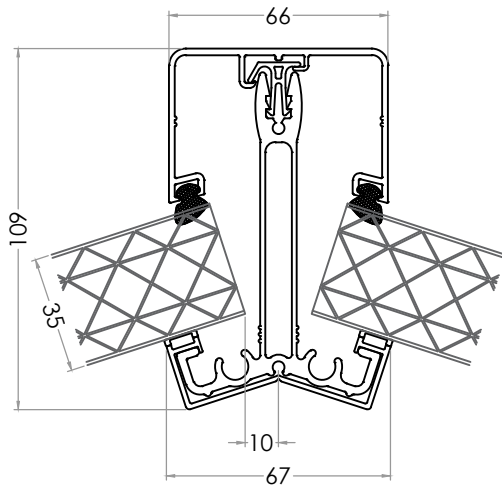
ALUMINIUM CAPPINGS- HEAVY DUTY RAFTERS - 35mm POLYCARBONATE



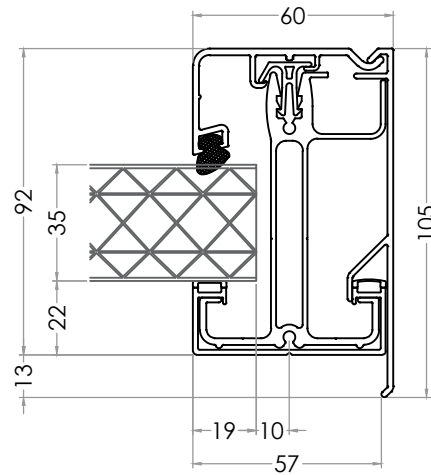
SKA-5112 35mm Square Transom Top Cap  
 SKP-9074 Glazing Bar Top Cap Connector  
 SKC-9060 Q-Lon Glazing Seal  
 SKA-5025 Heavy Duty Transom  
 SKP-6000 Glazing Bar Bottom Cap



SKA-5046 35mm Square Hip Top Cap  
 SKP-9074 Glazing Bar Top Cap Connector  
 SKC-9060 Q-Lon Glazing Seal  
 SKA-5116 Heavy Duty Victorian Hip  
 SKP-6000 Glazing Bar Bottom Cap



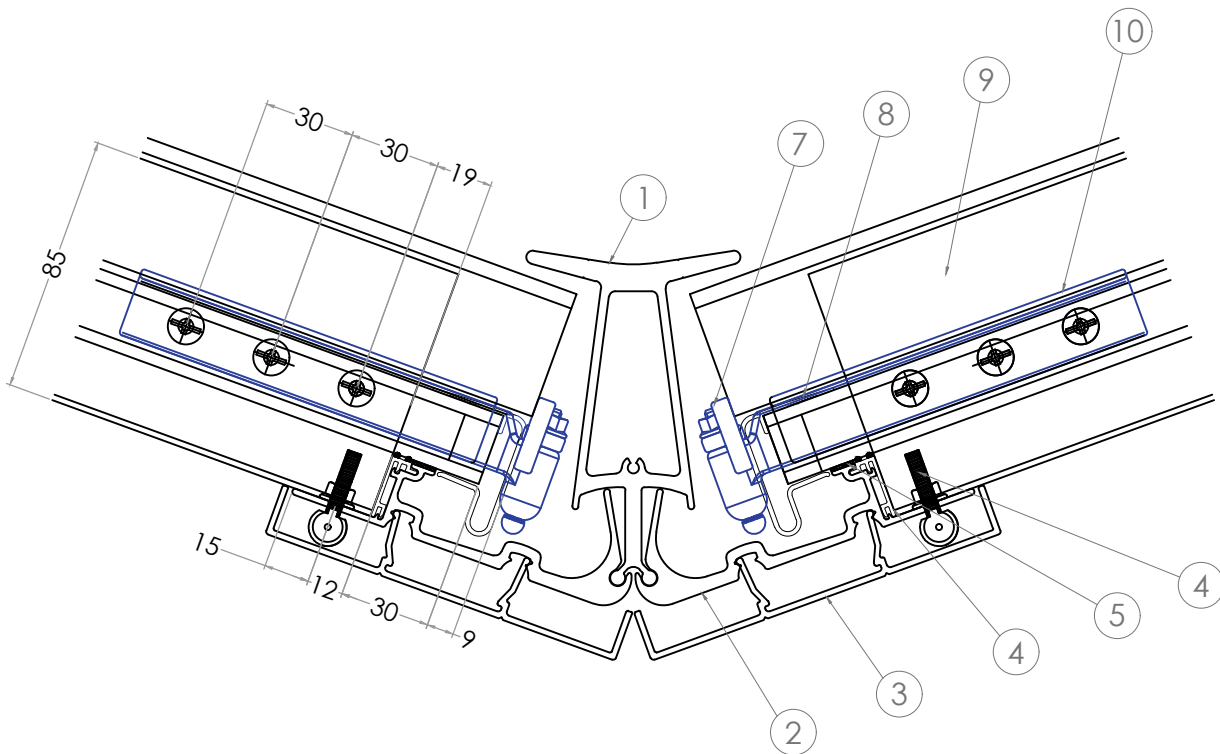
SKA-5046 35mm Square Hip Top Cap  
 SKP-9074 Glazing Bar Top Cap Connector  
 SKC-9060 Q-Lon Glazing Seal  
 SKA-5117 Heavy Duty Georgian Hip  
 SKP-6000 Glazing Bar Bottom Cap



SKA-5125 35mm Square Starter Bar Top Cap  
 SKP-9074 Glazing Bar Top Cap Connector  
 SKC-9060 Q-Lon Glazing Seal  
 SKA-5119 Standard Starter/Wall Bar  
 SKP-6000 Glazing Bar Bottom Cap  
 SKA-5156 Starter Bar Fascia Trim

DO NOT SCALE FROM THIS DRAWING

VALLEY ASSEMBLY



- |      |             |                          |
|------|-------------|--------------------------|
| 1 -  | SKA-5141 -  | Valley Centre            |
| 2 -  | SKA-5037 -  | Valley Wing              |
| 3 -  | SKP -6042 - | Universal Cover Trim     |
| 4 -  | SKP-6028 -  | Bottom Cloaking Trim     |
| 5 -  | SKC-8008 -  | Valley Wing Tape         |
| 6 -  | SKC-9144 -  | Pivot Bolt Assembly      |
| 7 -  | SKC-9168 -  | Valley Glass Paddle      |
| 8 -  | SKA-5161 -  | 24/25mm Glazing End Trim |
| 9 -  |             | Glazing Bars             |
| 10 - | SKC-9196 -  | Jack Rafter Arm Kit      |

Max. Pitch Difference across a Valley = 20°

It is recommended to avoid Zero return valleys due to the convergence of different planes. The fabricator takes it on their own volition attempting conservatories of this nature. Minimum return 300mm at a valley corner.

DO NOT SCALE FROM THIS DRAWING

ROOF RIDGE CONFIGURATIONS - 25° FIXED PITCH RIDGE

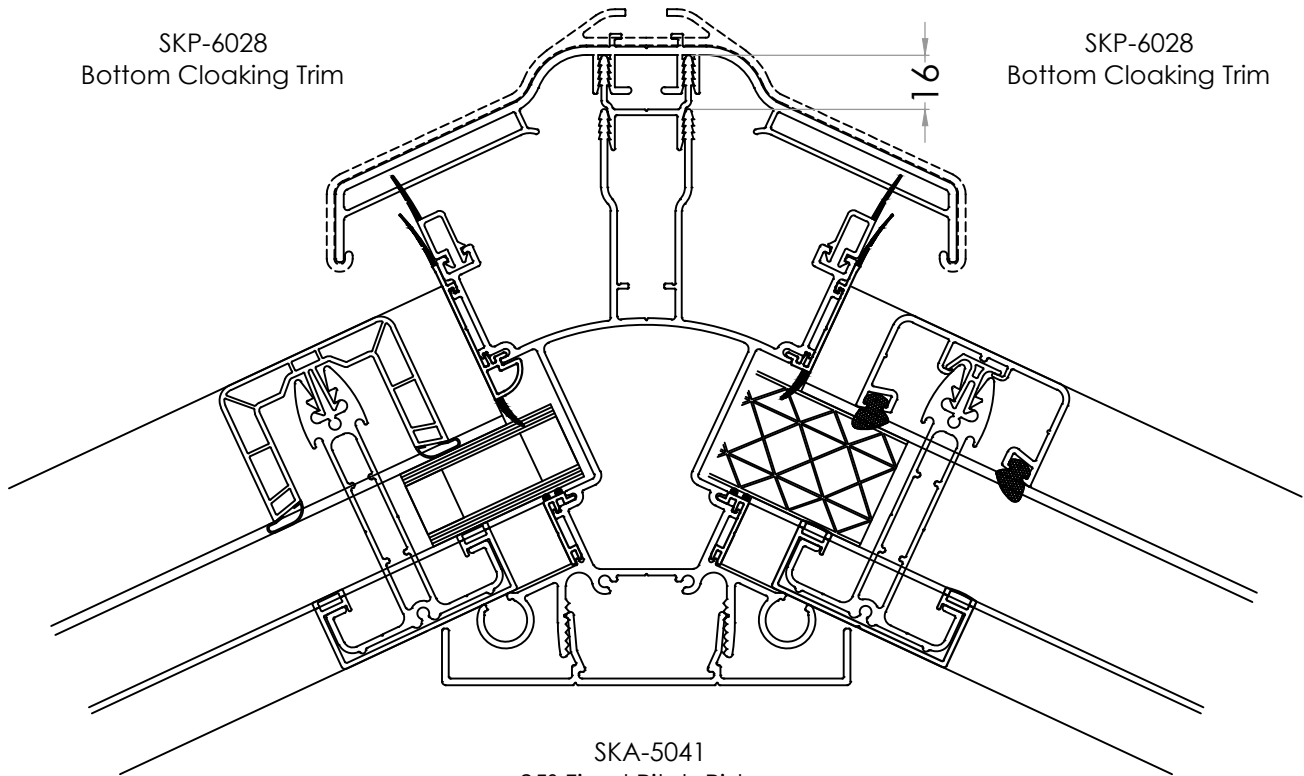
SKC-9433 Ridge Centre Extender  
 SKP-6029 Ridge Wing Extender  
 (specified in VS Software)

SKP-6031  
 24/25mm Top Cloaking Trim

SKP-6030  
 35mm Top Cloaking Trim

SKP-6028  
 Bottom Cloaking Trim

SKP-6028  
 Bottom Cloaking Trim



SKA-5041  
 25° Fixed Pitch Ridge

SKP-6042  
 Universal Internal Cover

24/25mm Glazing available with PVCu and Aluminium Top Caps

35mm Polycarboante Glazing available with Aluminium Top Caps only

DO NOT SCALE FROM THIS DRAWING

01

ROOF RIDGE CONFIGURATIONS

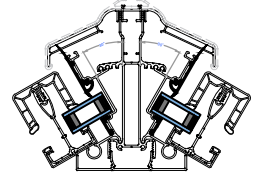
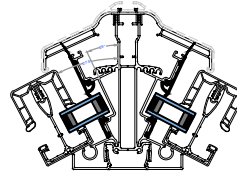
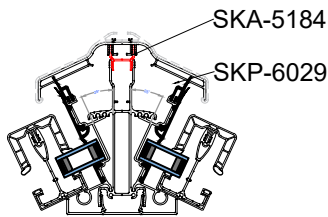
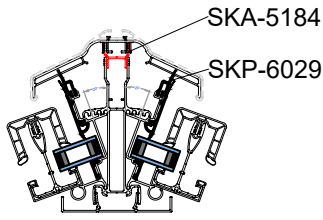
20°

25°

27.5°

30°

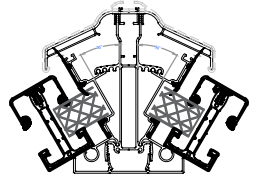
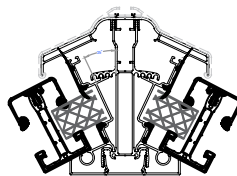
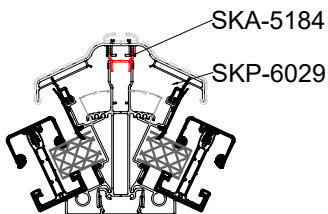
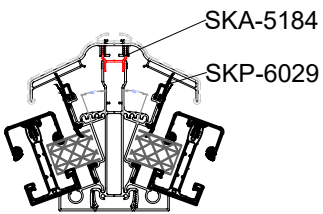
GEORGIAN/ VICTORIAN ROOFS 24mm GLAZING - VARIABLE RIDGE



Ridge & Wing Extenders  
NOT required

Ridge & Wing Extenders  
NOT required

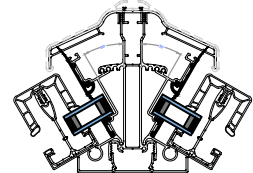
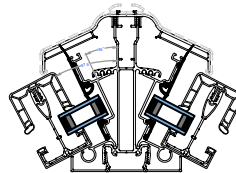
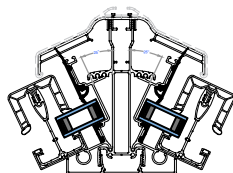
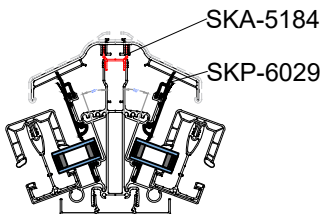
GEORGIAN/ VICTORIAN ROOFS 35mm POLY - VARIABLE RIDGE



Ridge & Wing Extenders  
NOT required

Ridge & Wing Extenders  
NOT required

GABLE ROOFS (NO HIPS OR RADIUS ENDS) - VARIABLE RIDGE



Ridge & Wing Extenders  
NOT required

Ridge & Wing Extenders  
NOT required

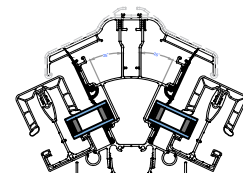
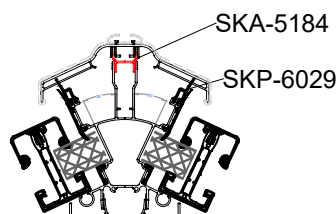
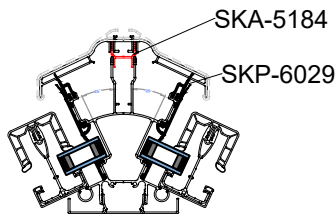
Ridge & Wing Extenders  
NOT required

FIXED PITCH RIDGE 25°

24mm GLAZING  
GEORGIAN/ VICTORIAN ROOFS

35mm POLY  
GEORGIAN/ VICTORIAN ROOFS

GABLE ROOFS



Ridge & Wing Extenders  
NOT required

DO NOT SCALE FROM THIS DRAWING

COMBINATION ROOF RIDGE CONFIGURATIONS

Ridge Pitch

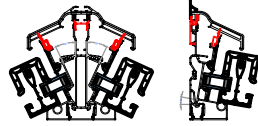
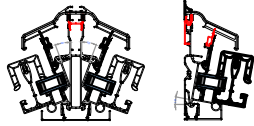
20°

25°

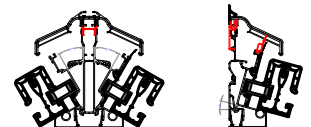
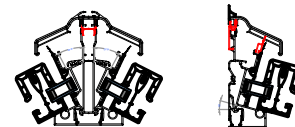
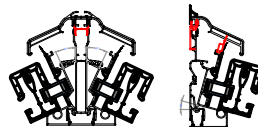
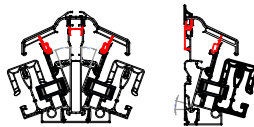
27.5°

30°

10°



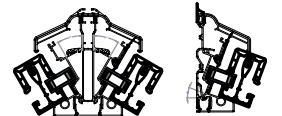
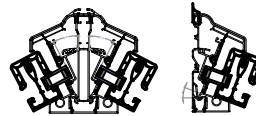
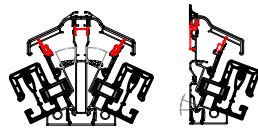
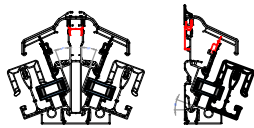
15°



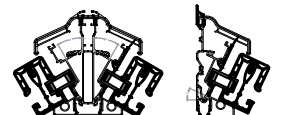
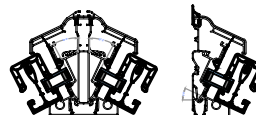
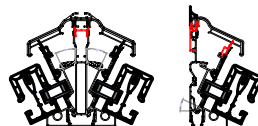
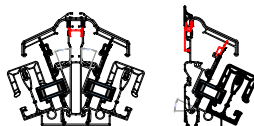
Deep Skirt Radius End Cover Required

Deep Skirt Radius End Cover Required

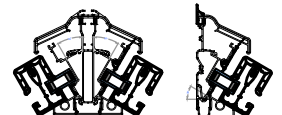
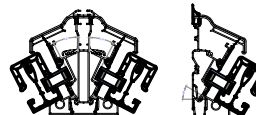
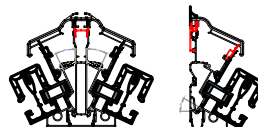
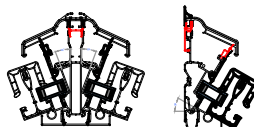
20°



25°



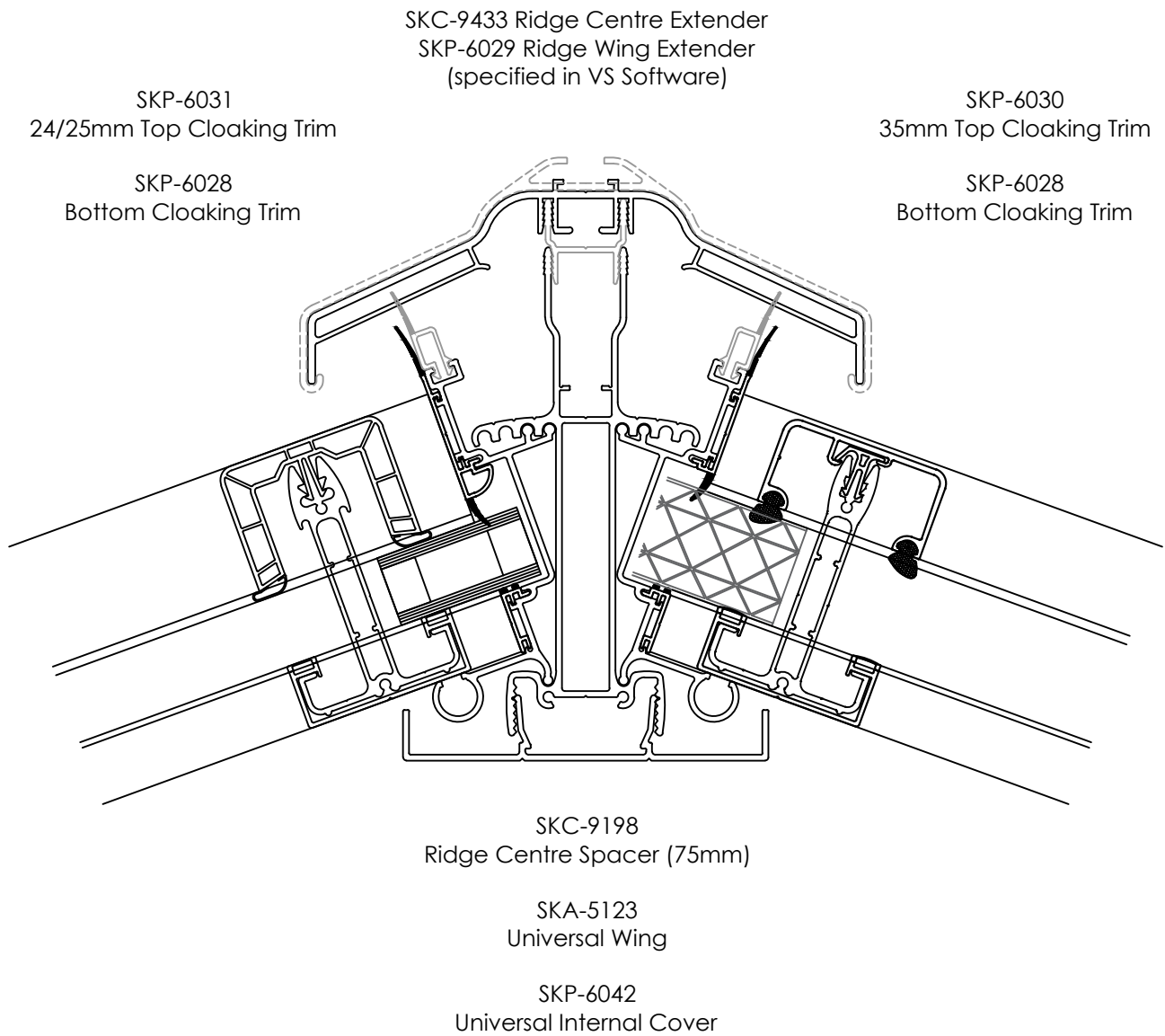
30°



DO NOT SCALE FROM THIS DRAWING



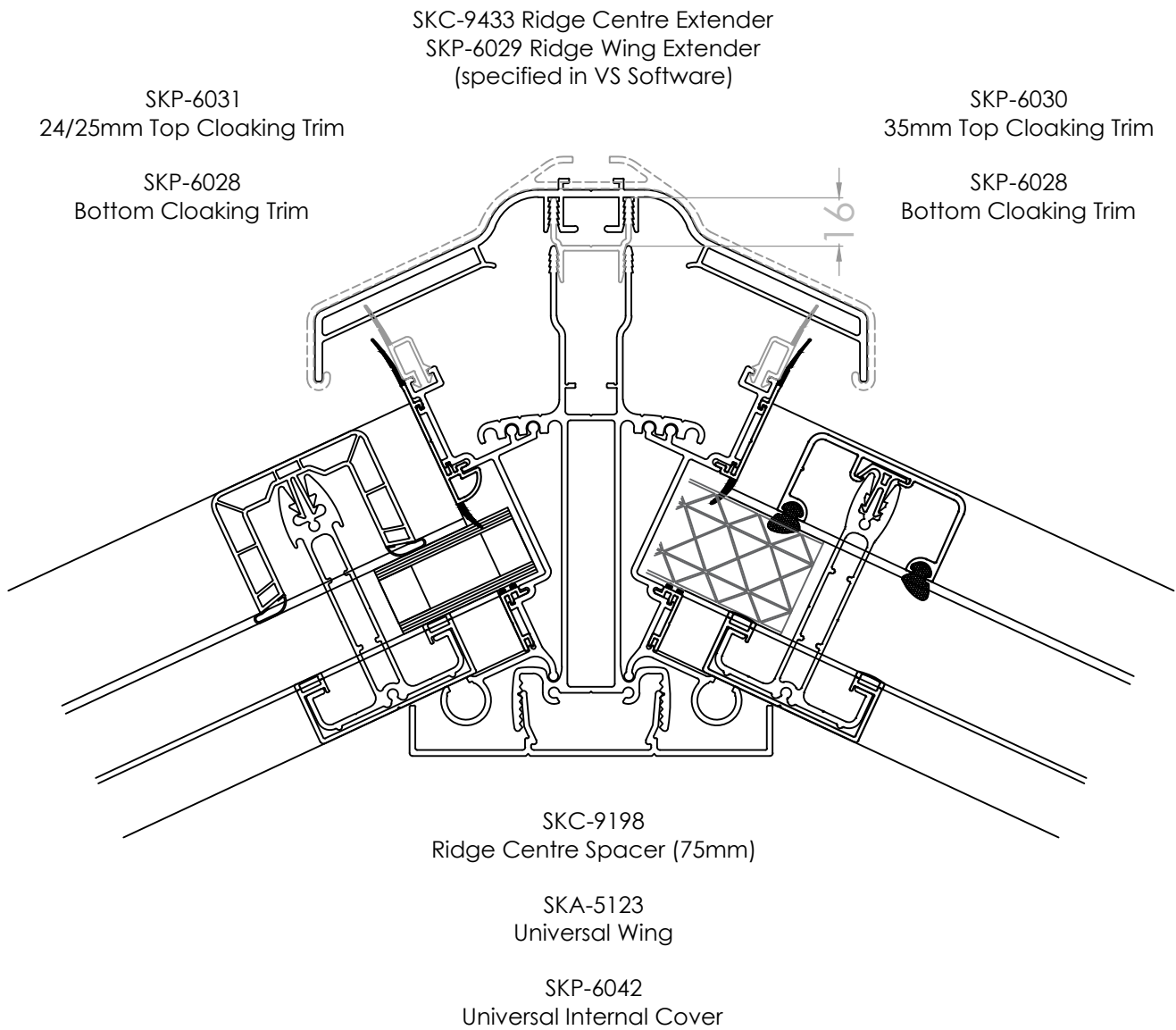
ROOF RIDGE CONFIGURATIONS - VARIABLE PITCH RIDGE - 20°



24/25mm Glazing available with PVCu and Aluminium Top Caps  
 35mm Polycarboante Glazing available with Aluminium Top Caps only

DO NOT SCALE FROM THIS DRAWING

ROOF RIDGE CONFIGURATIONS - VARIABLE PITCH RIDGE - 25°



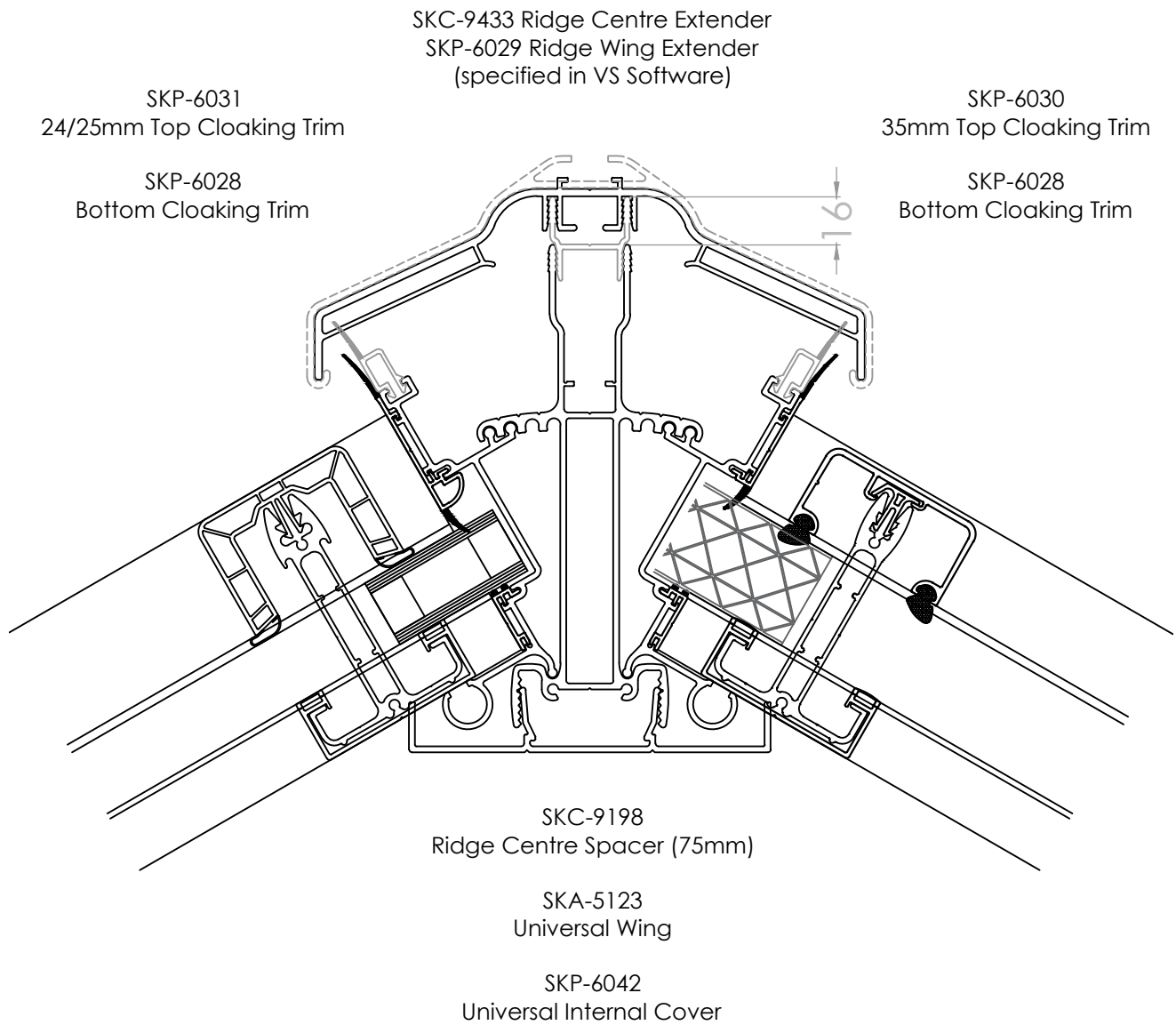
24/25mm Glazing available with PVCu and Aluminium Top Caps

35mm Polycarboante Glazing available with Aluminium Top Caps only

DO NOT SCALE FROM THIS DRAWING

03

ROOF RIDGE CONFIGURATIONS - VARIABLE PITCH RIDGE - 30°

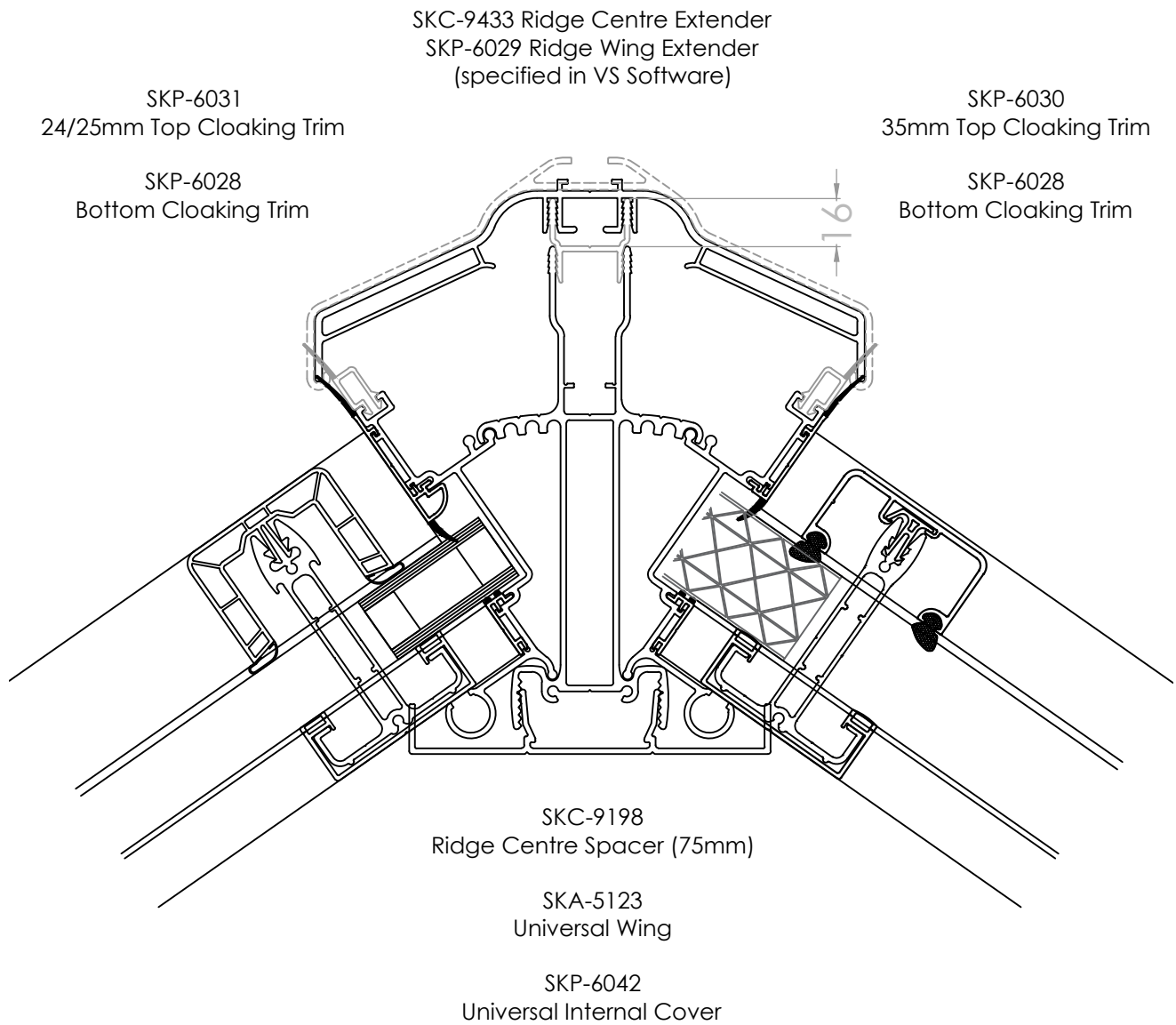


24/25mm Glazing available with PVCu and Aluminium Top Caps

35mm Polycarboante Glazing available with Aluminium Top Caps only

DO NOT SCALE FROM THIS DRAWING

ROOF RIDGE CONFIGURATIONS - VARIABLE PITCH RIDGE - 35°



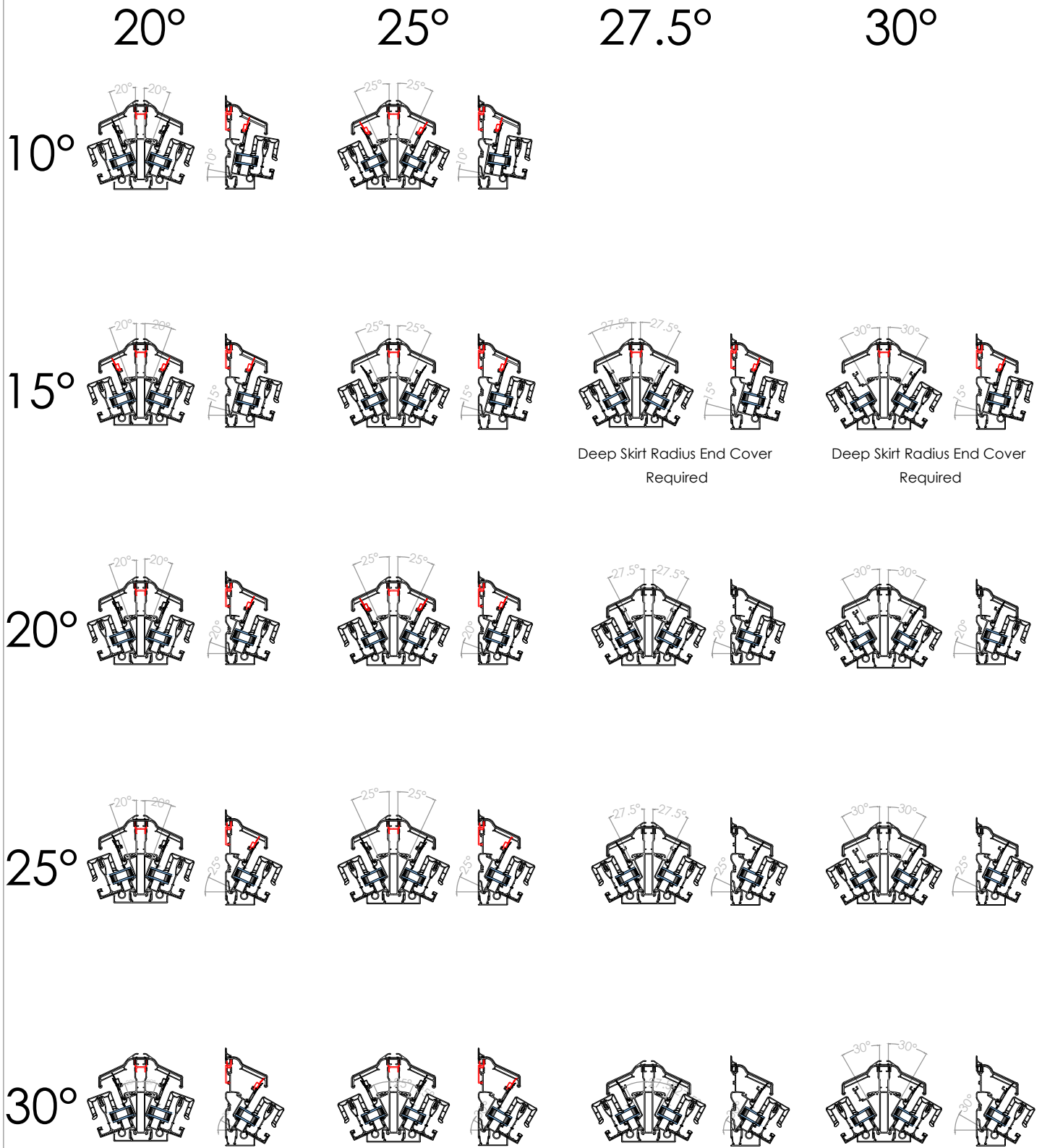
24/25mm Glazing available with PVCu and Aluminium Top Caps

35mm Polycarboante Glazing available with Aluminium Top Caps only

DO NOT SCALE FROM THIS DRAWING

05

COMBINATION ROOF RIDGE CONFIGURATIONS



DO NOT SCALE FROM THIS DRAWING

ROOF RIDGE CONFIGURATIONS

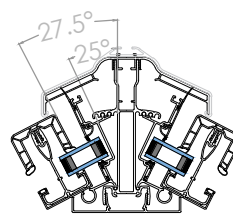
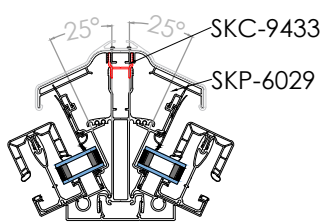
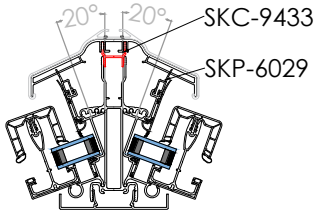
20°

25°

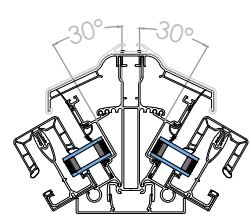
27.5°

30°

GEORGIAN/ VICTORIAN ROOFS 24mm GLAZING - VARIABLE RIDGE

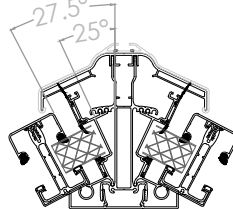
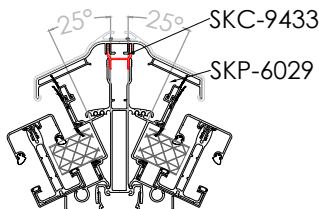
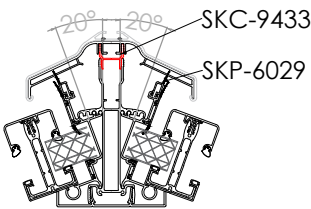


Ridge & Wing  
Extenders NOT  
required

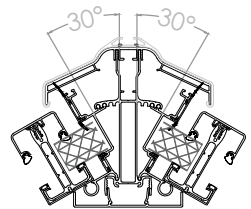


Ridge & Wing  
Extenders NOT  
required

GEORGIAN/ VICTORIAN ROOFS 35mm POLY - VARIABLE RIDGE

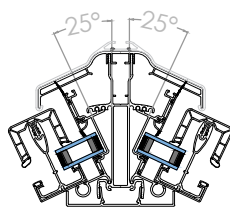
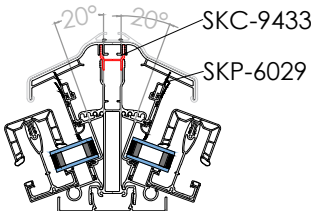


Ridge & Wing  
Extenders NOT  
required

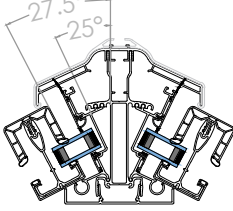


Ridge & Wing  
Extenders NOT  
required

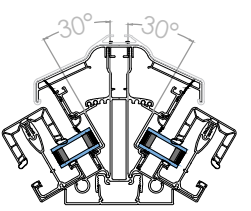
GABLE ROOFS (NO HIPS OR RADIUS ENDS) - VARIABLE RIDGE



Ridge & Wing  
Extenders NOT  
required



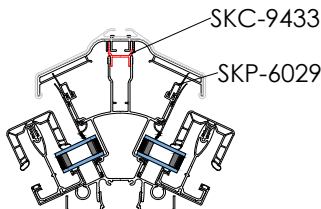
Ridge & Wing  
Extenders NOT  
required



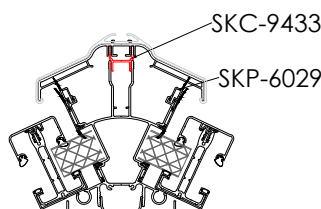
Ridge & Wing  
Extenders NOT  
required

FIXED PITCH RIDGE 25°

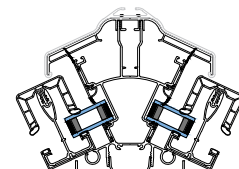
24mm GLAZING  
GEORGIAN/ VICTORIAN ROOFS



35mm POLY  
GEORGIAN/ VICTORIAN ROOFS



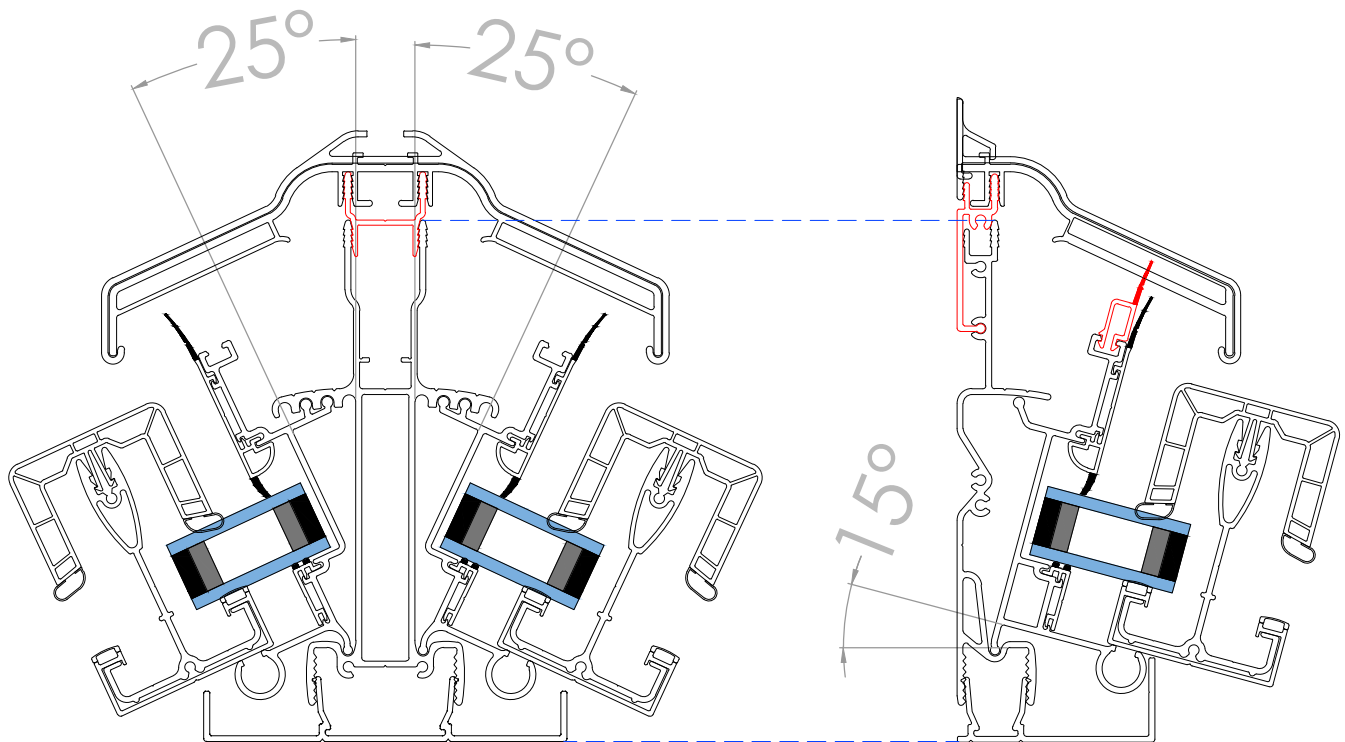
GABLE ROOFS



Ridge & Wing  
Extenders NOT  
required

DO NOT SCALE FROM THIS DRAWING

## COMBINATION ROOF RIDGE CONFIGURATIONS

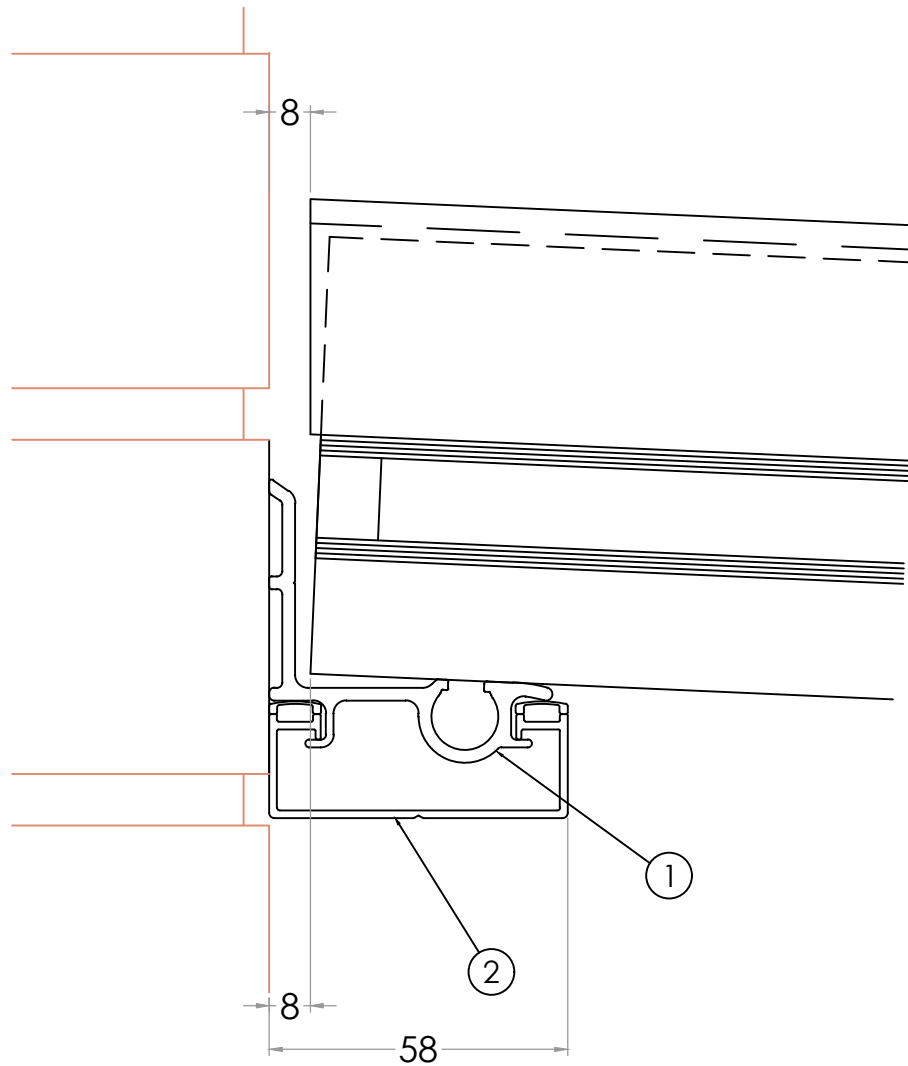


Ridge and Wall Plate aluminium sections across combination roofs always line through. Internal claddings will need lining through to suit. Occasional trimming of the leg on the lean to internal PVC cladding may be required at certain pitches.

DO NOT SCALE FROM THIS DRAWING

07

LIGHTWEIGHT WALL PLATE



- |   |          |                           |
|---|----------|---------------------------|
| 1 | SKA-5004 | Lightweight Wall Plate    |
| 2 | SKP-6000 | Glazing Bar Undercladding |

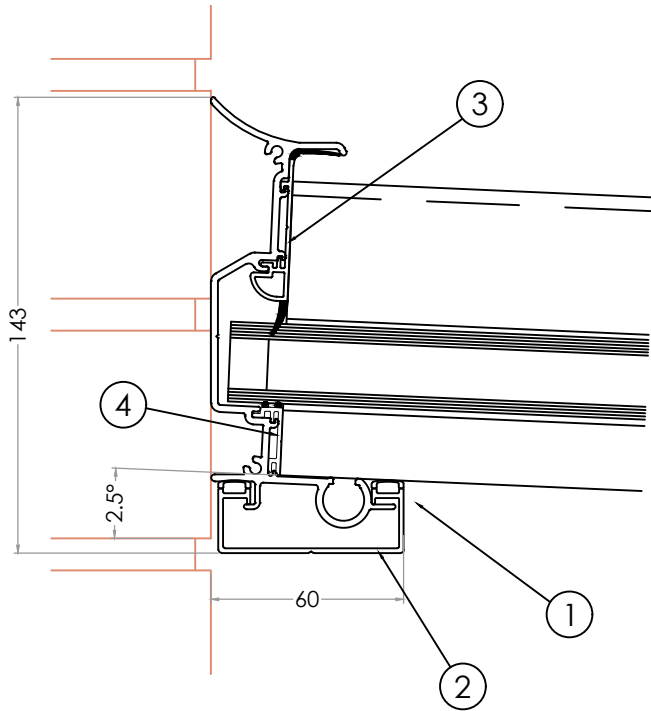
Lightweight wall plates can be used in areas with height restrictions. Rafters are cut perpendicular to the roof pitch, Top Capping's are mitre cut to suit the roof pitch.

DO NOT SCALE FROM THIS DRAWING

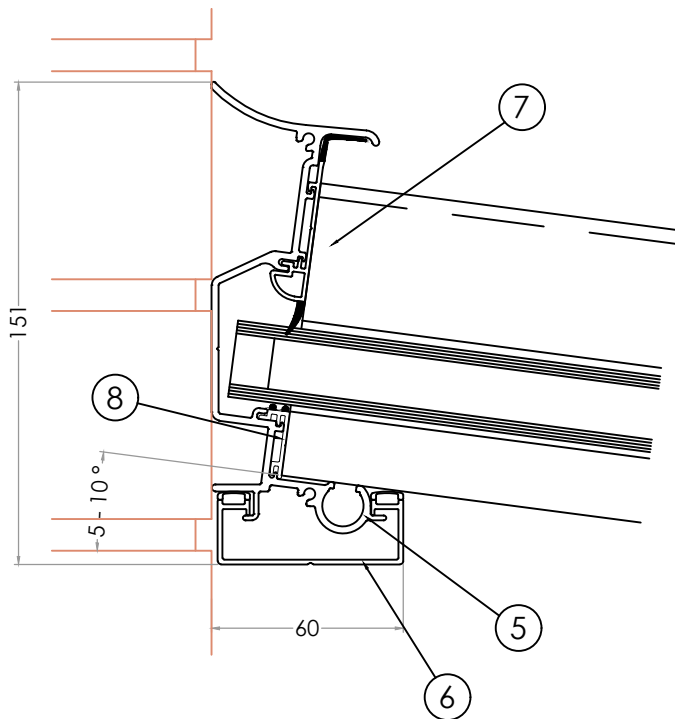
08



FIXED PITCH WALL PLATES



- 1 SKA-5039 2.5° Fixed Pitch Wall Plate
- 2 SKP-6000 Glazing Bar Undercladding
- 3 SKP-6031 Top Cloaking Trim 24mm
- 4 SKP-6028 Bottom Cloaking Trim

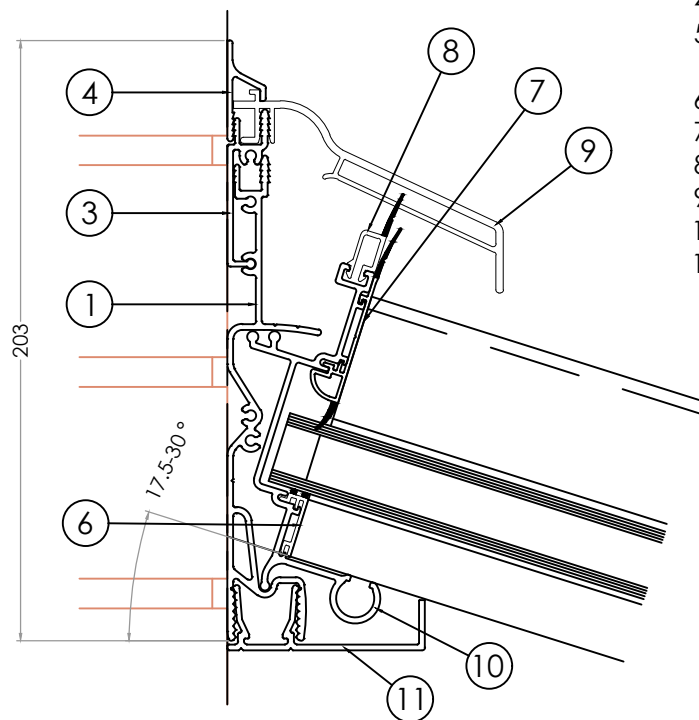
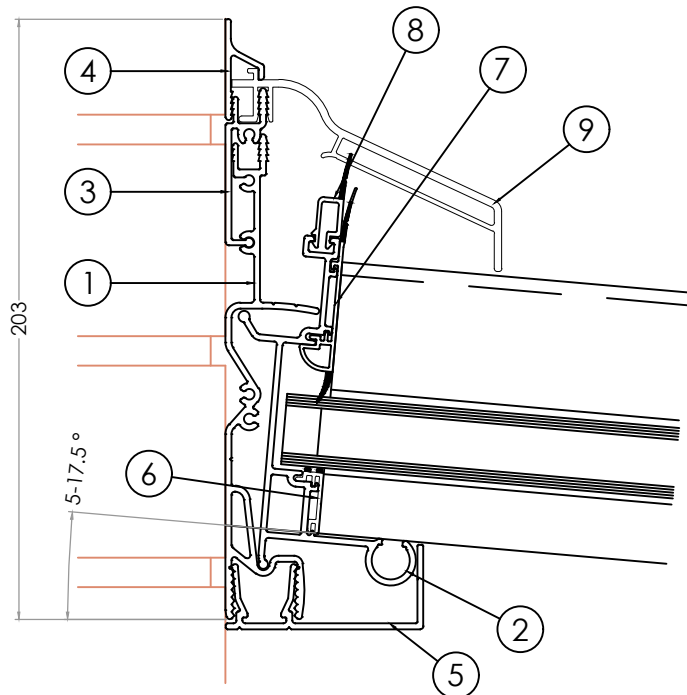


- 5 SKA-5127 5-10° Fixed Pitch Wall Plate
- 6 SKP-6000 Glazing Bar Undercladding
- 7 SKP-6031 Top Cloaking Trim 24mm
- 8 SKP-6028 Bottom Cloaking Trim

Fixed wall plates are used as standard on lean- to roofs up to 10°. Rafter & Top Capping's are mitre cut to suit the roof pitch.

DO NOT SCALE FROM THIS DRAWING

VARIABLE PITCH WALL PLATES

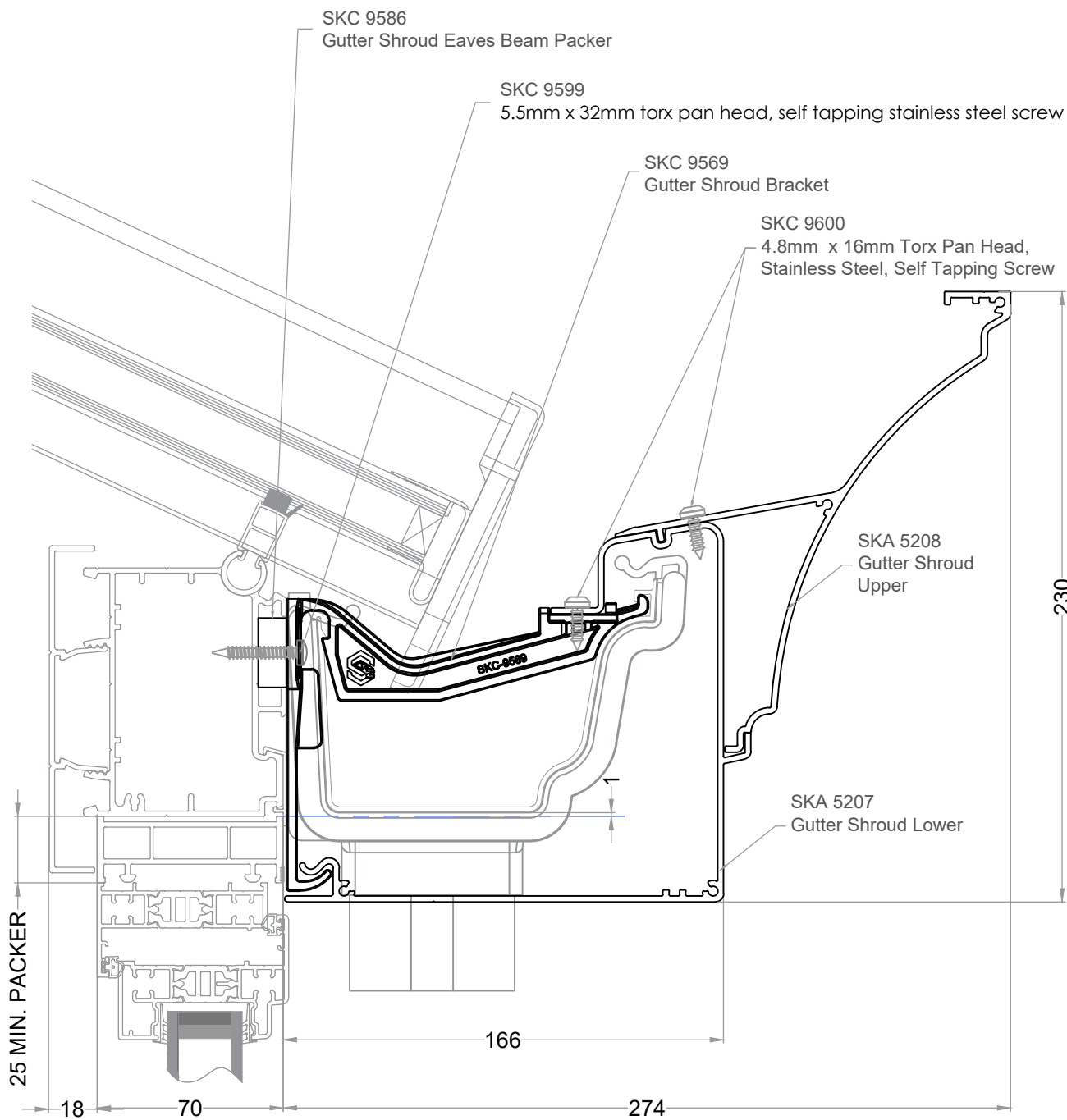


- |    |          |   |
|----|----------|---|
| 1  | SKA-5136 | Half Ridge Wall Plate                         |
| 2  | SKA-5135 | 5-17.5° Universal Wing                        |
| 3  | SKA-5131 | Half Ridge Wall Plate Adaptor                 |
| 4  | SKA-5132 | Half Ridge Flashing Trim                      |
| 5  | SKP-6073 | 5-17.5° Half Ridge Wall Plate Internal Cover  |
| 6  | SKP-6028 | Bottom Cloaking Trim                          |
| 7  | SKP-6031 | Top Cloaking Trim 24mm                        |
| 8  | SKP-6029 | Ridge Wing Extender                           |
| 9  | SKP-6052 | Half Ridge Wall Plate Top Cap                 |
| 10 | SKA-5123 | Universal Wing                                |
| 11 | SKP-6072 | 17.5-30° Half Ridge Wall Plate Internal Cover |

Variable pitch wall plates are used as standard on combination roofs and standard lean to roofs over 10°. Rafter & top capping's are square cut. Wall plate wings rotate to suit the roof pitch. Variable wall plates can also be used on all Lean-To roofs from 5-30° where a top cap is requested.

DO NOT SCALE FROM THIS DRAWING

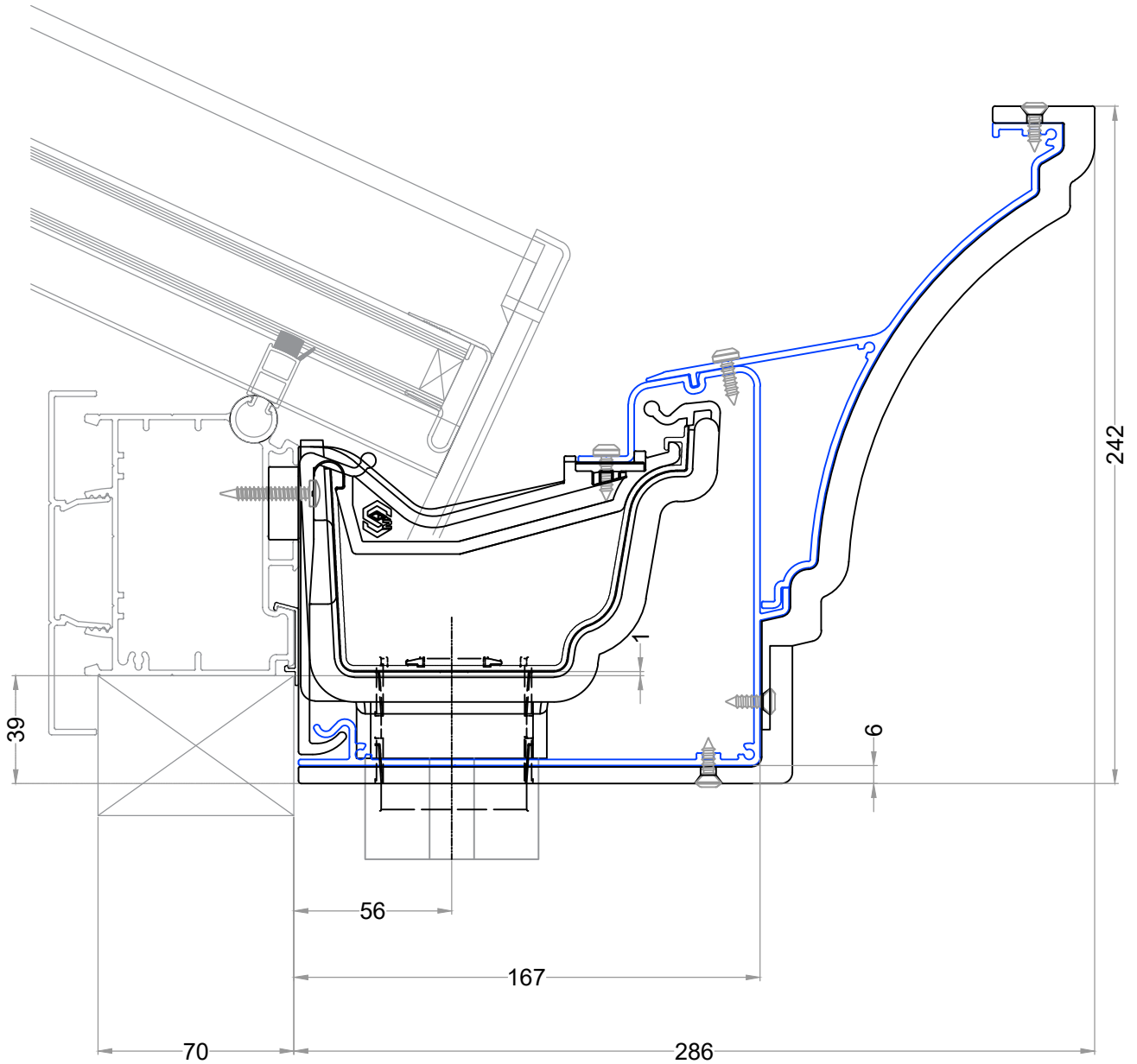
DECORATIVE GUTTER SHROUD - TYPICAL SECTION THROUGH ON FRAMES



DO NOT SCALE FROM THIS DRAWING

01

DECORATIVE GUTTER SHROUD - TYPICAL SECTION THROUGH ON FRAMES



SKA 5207  
Gutter Shroud Lower

SKA 5208  
Gutter Shroud Upper

SKC 9599  
5.5mm x 32mm torx pan head,  
self tapping stainless steel screw

SKC 9600  
4.8mm x 16mm Torx Pan Head,  
Stainless Steel, Self Tapping Screw

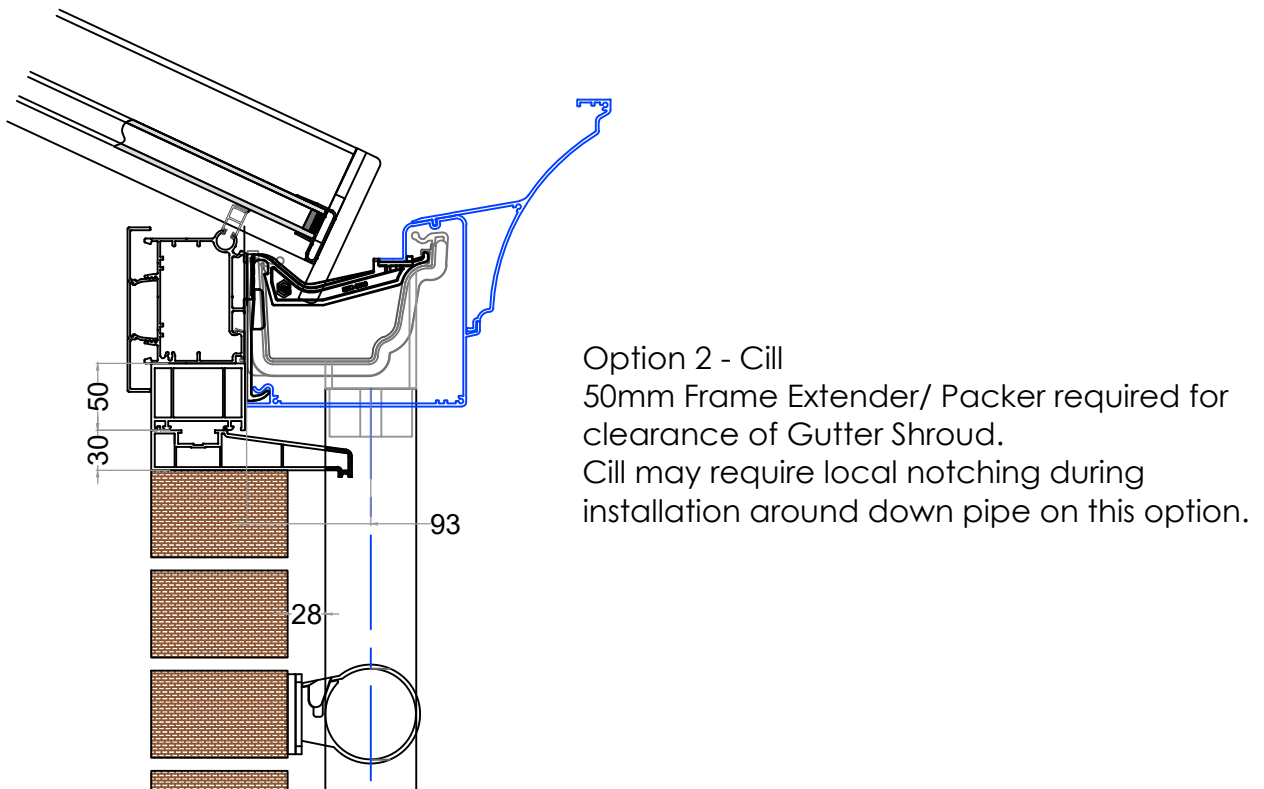
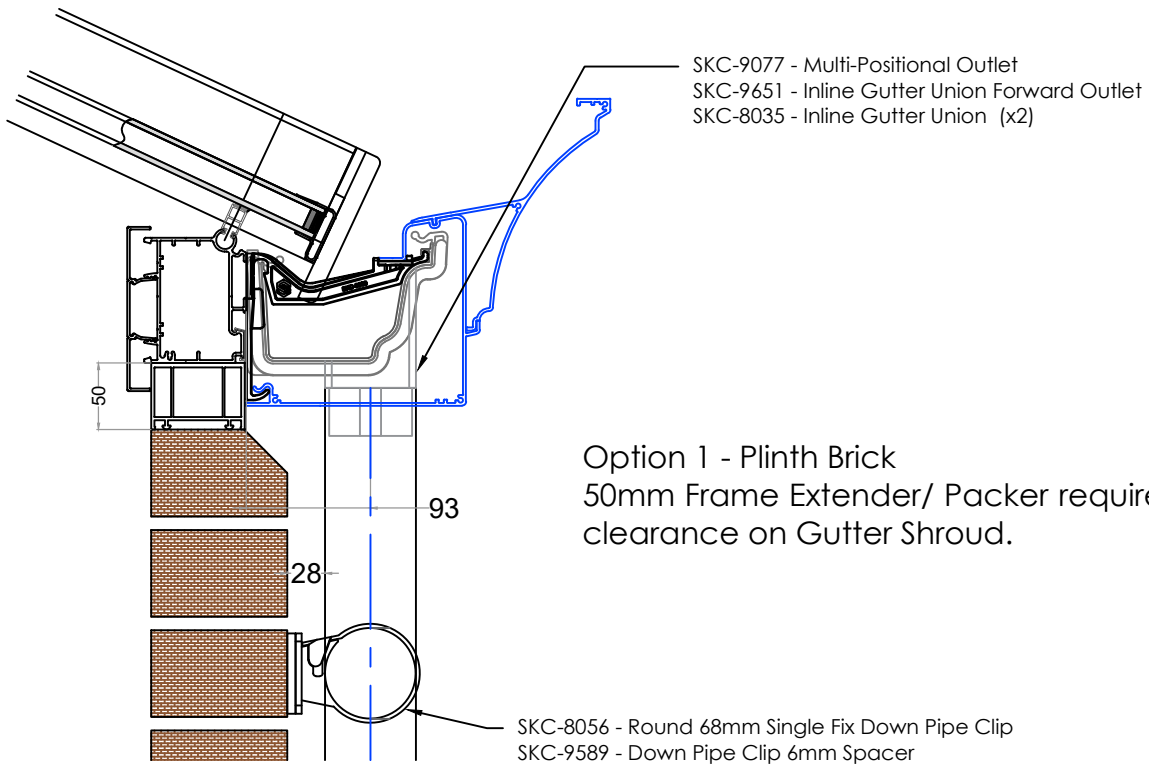
SKC 9586  
Gutter Shroud Eaves Beam  
Packer

SKC 9569  
Gutter Shroud Bracket

DO NOT SCALE FROM THIS DRAWING

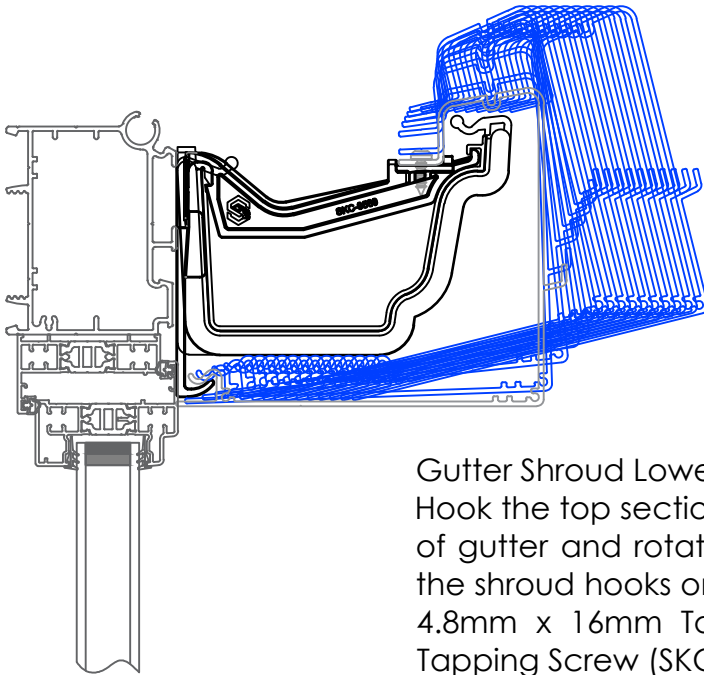
01

DECORATIVE GUTTER SHROUD - TYPICAL SECTIONS THROUGH ON BRICKWORK



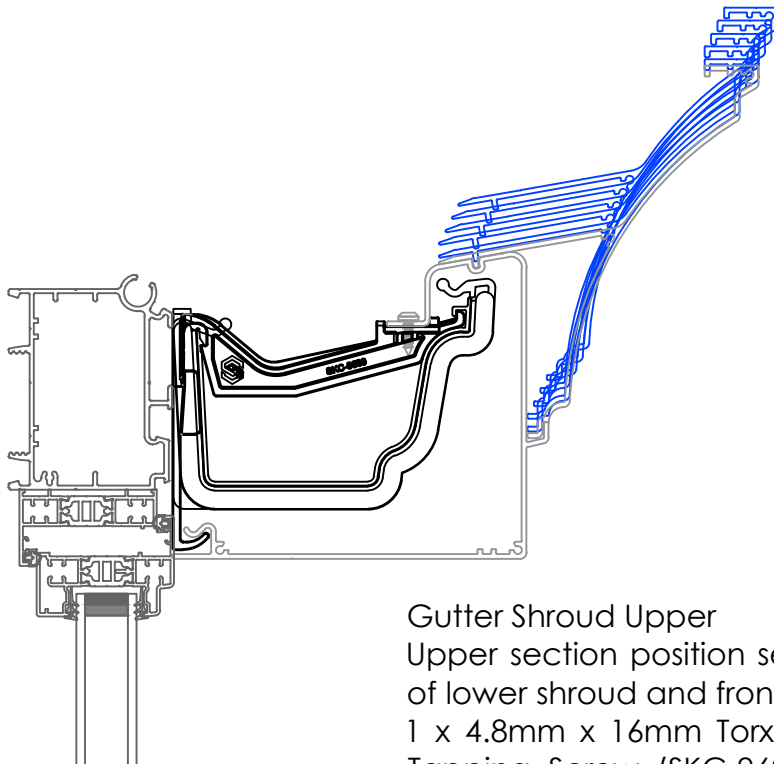
DO NOT SCALE FROM THIS DRAWING

## DECORATIVE GUTTER SHROUD - FITTING DETAIL



## Gutter Shroud Lower

Hook the top section of the shroud over the front edge of gutter and rotate until clip on the bottom edge of the shroud hooks onto the gutter brackets. Fix using 2 x 4.8mm x 16mm Torx Pan Head, Stainless Steel, Self Tapping Screw (SKC-9600) per gutter bracket.

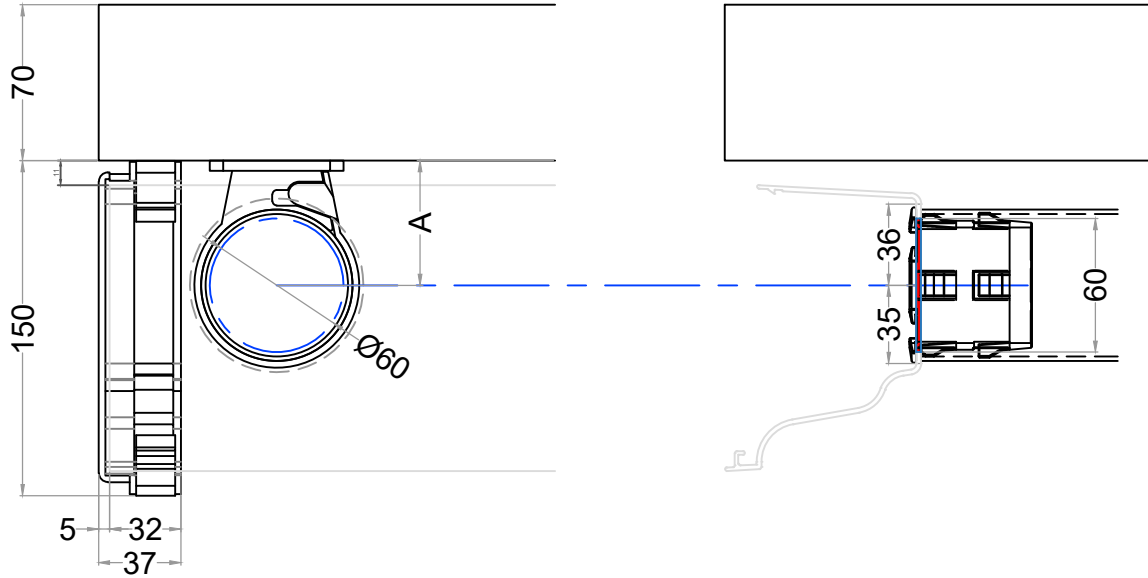


## Gutter Shroud Upper

Upper section position self-sets into recess on top edge of lower shroud and front edge of lower shroud. Fix using 1 x 4.8mm x 16mm Torx Pan Head, Stainless Steel, Self Tapping Screw (SKC-9600) every 500mm and 150mm from edges.

DO NOT SCALE FROM THIS DRAWING

DECORATIVE GUTTER SHROUD - DOWNPIPE CUT OUT

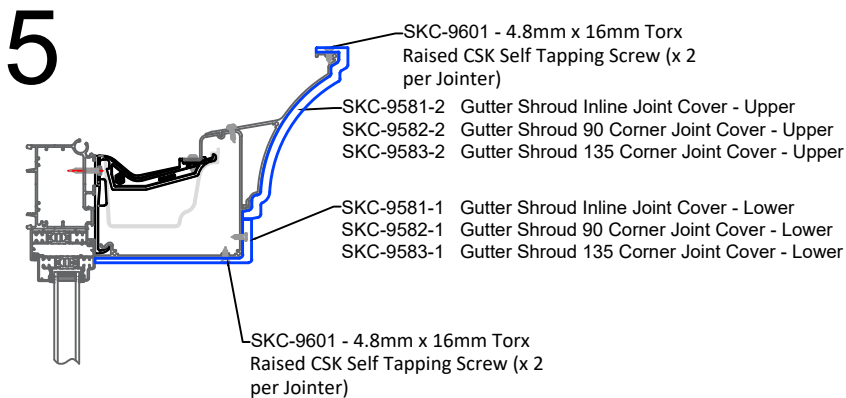
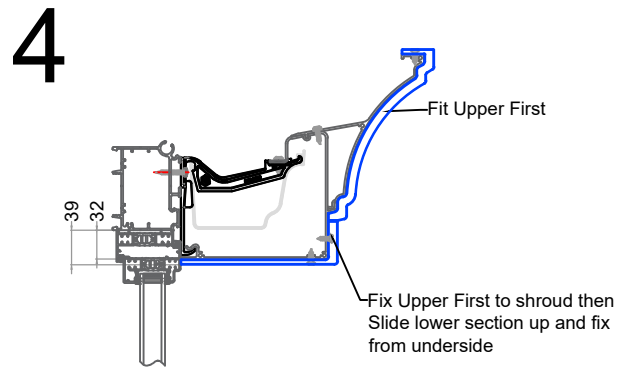
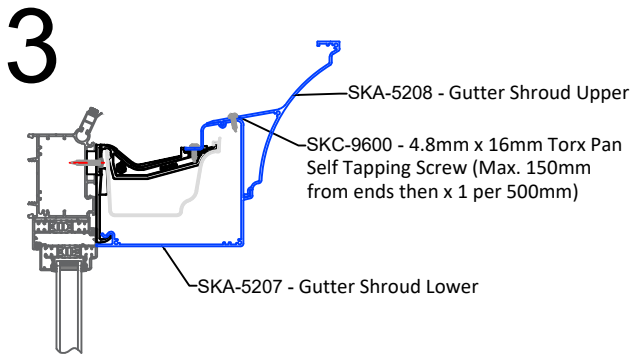
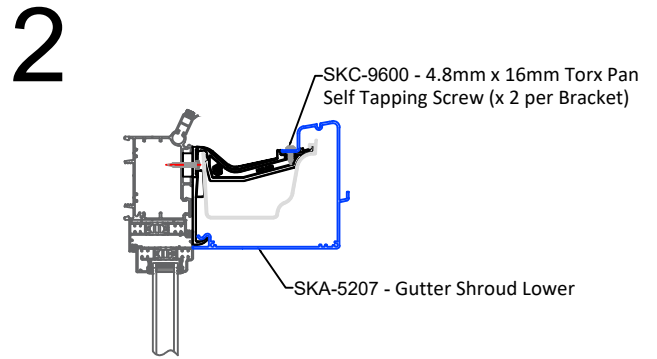
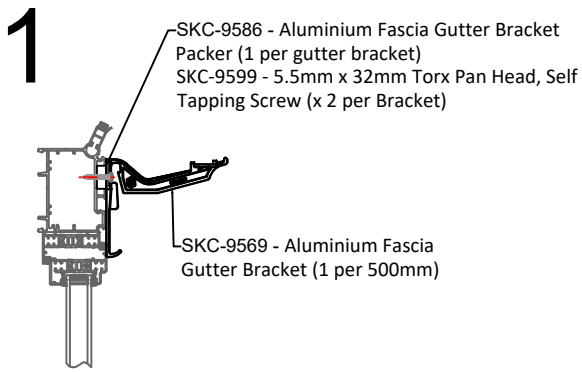


Hole Cut Out for Down Pipe	
	DIM A
Gutter Shroud on Frames	56mm
Gutter Shroud on Brickwork	94mm

Typical Hole Cut Out Dimension Offsets on Gutter Shroud. Ø60mm Hole Saw Required

DO NOT SCALE FROM THIS DRAWING

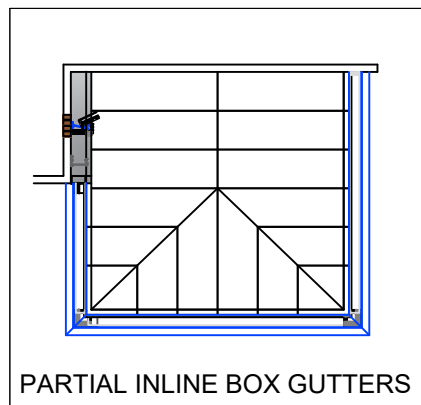
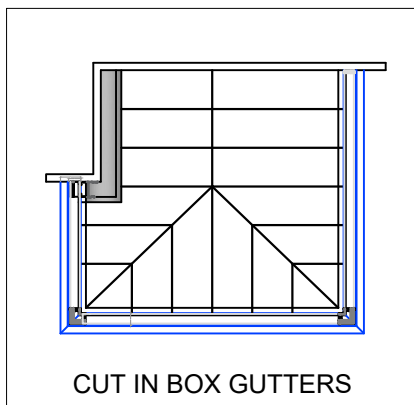
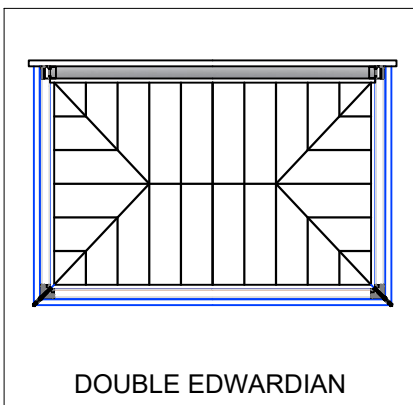
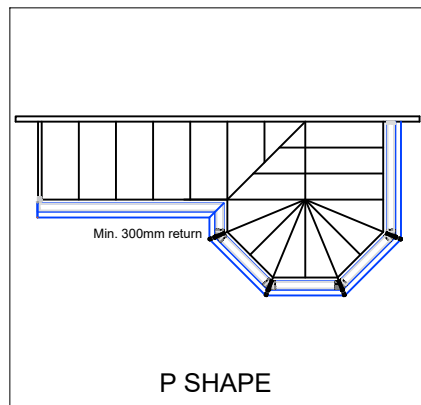
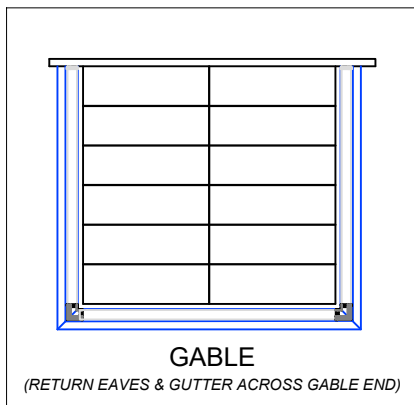
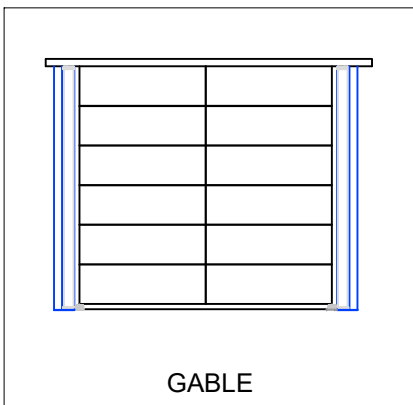
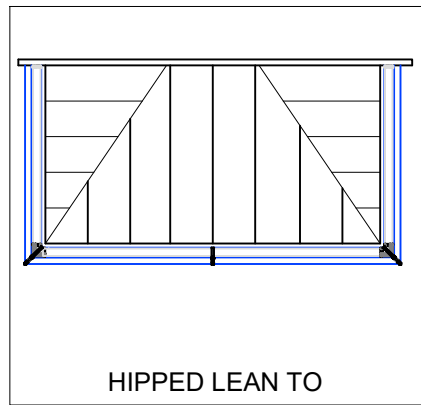
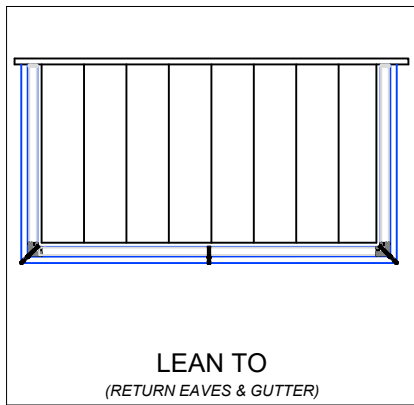
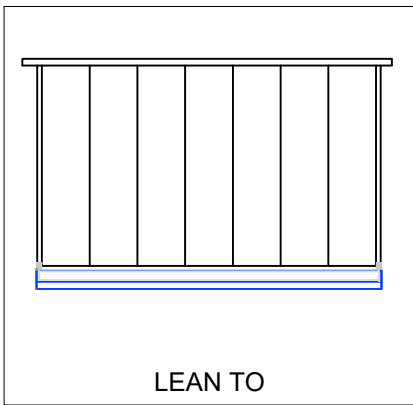
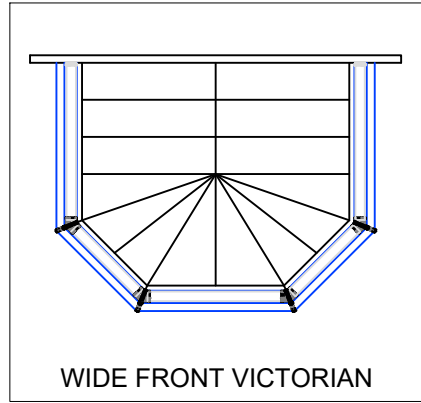
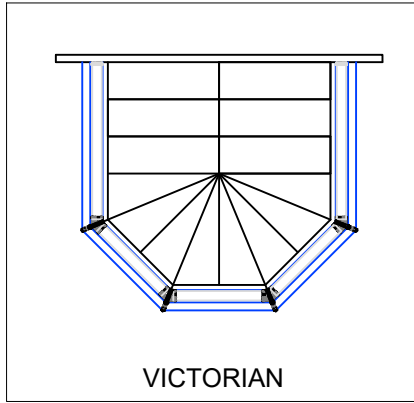
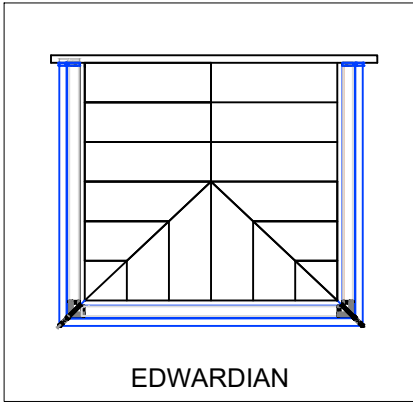
DECORATIVE GUTTER SHROUD - FIXING POINTS



DO NOT SCALE FROM THIS DRAWING

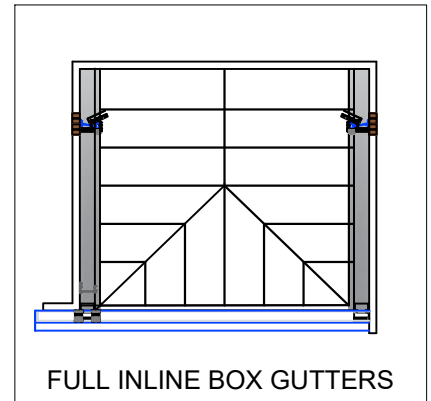
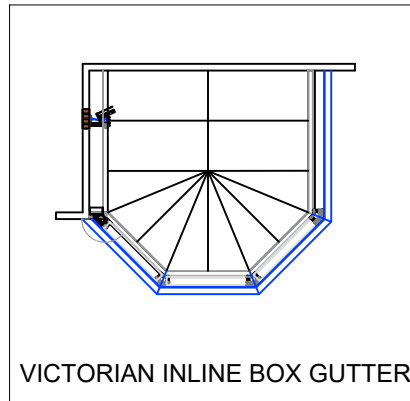
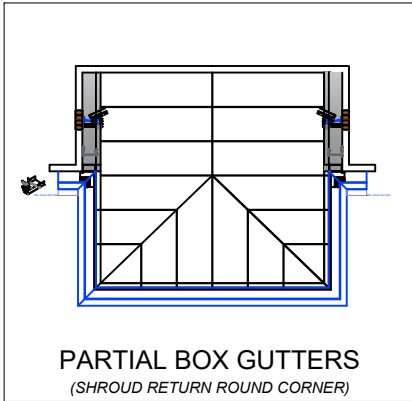


DECORATIVE GUTTER SHROUD - TYPICAL ROOF CONFIGURATIONS



DO NOT SCALE FROM THIS DRAWING

## DECORATIVE GUTTER SHROUD - TYPICAL ROOF CONFIGURATIONS CONTINUED

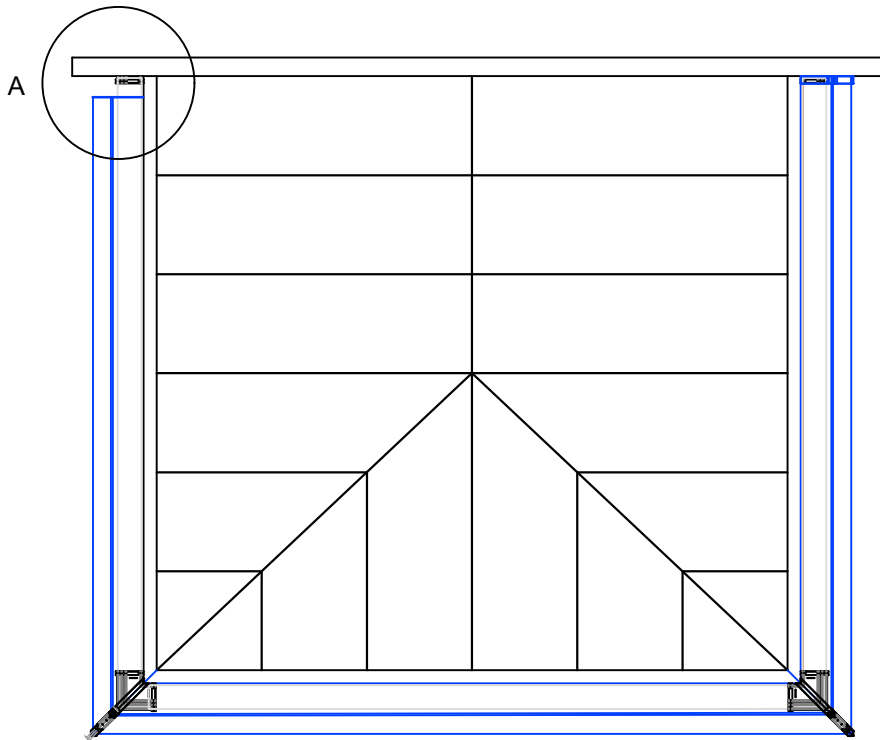


Typical shroud details can be combined on combination roofs.

- Minimum return at an internal 90 corner is 300mm (P-Shape, T-Shape, L-Shape roofs).
- Maximum length shroud is 6m before an inline joint is required.
- Shroud not suitable on roofs with non standard angles. (90° & 135° Angles only).

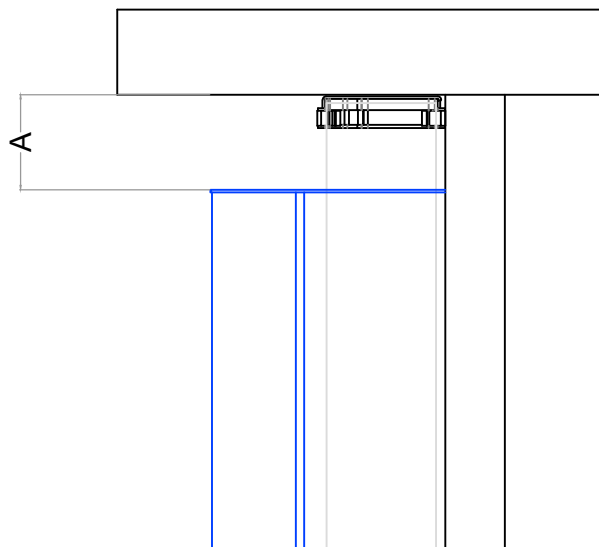
DO NOT SCALE FROM THIS DRAWING

DECORATIVE GUTTER SHROUD - OFFSETS AT HOST WALL



Where site conditions require the Gutter Shroud to be offset from a host wall, Gutter Shroud Stop End (SKC-9627) and Fixings will be supplied to clad the open end of the shroud where necessary. To ensure Gutter Shroud is cut to the correct length, this information will be required at point of order.

The standard gutter is supplied to suit the full length of the eaves beam and can be cut on site to suit if necessary. Where gutter continues through to host wall, stop end plate will require cutting out to suit the profile of the gutter. These details can be found in the S2 Installation Guide.

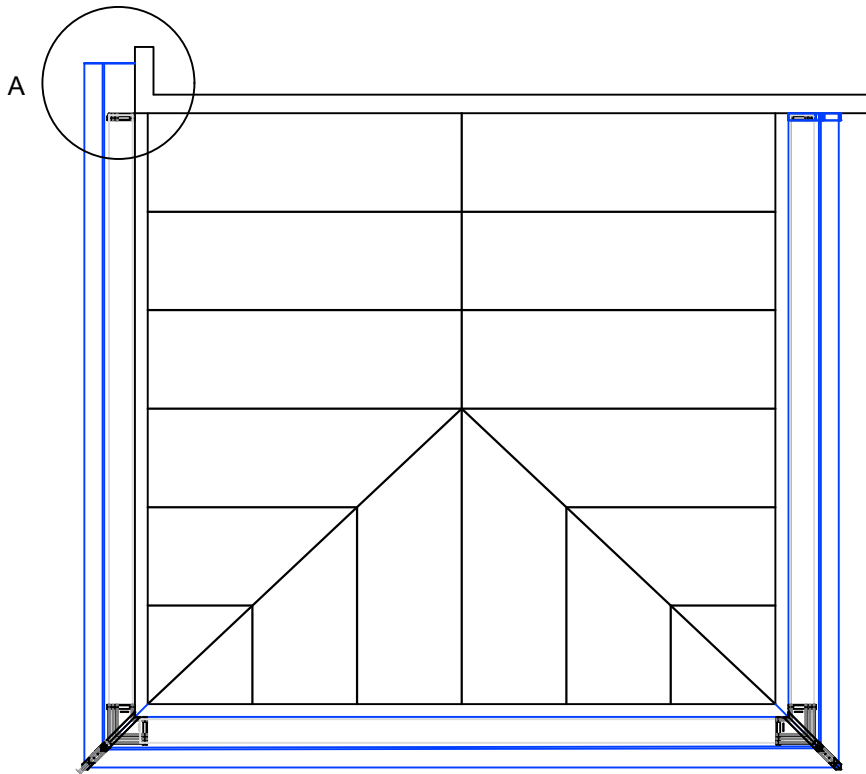


DIM A = Shroud deduction from host wall

(Cut length of Shroud to include 3mm deduction for End Plate).

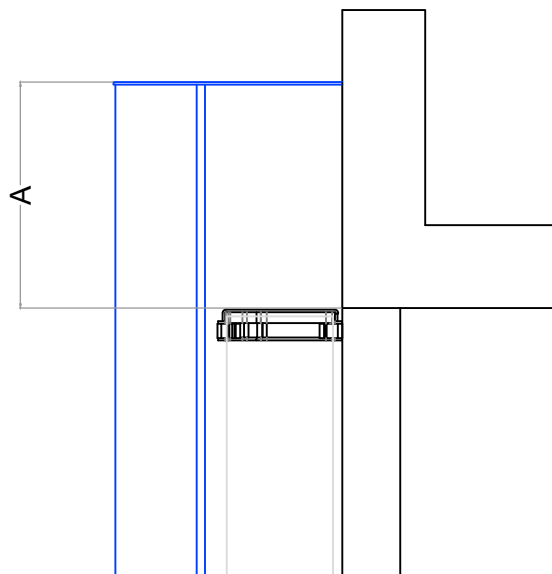
DO NOT SCALE FROM THIS DRAWING

DECORATIVE GUTTER SHROUD - EXTENSION AT HOST WALL



Where site conditions require the Gutter Shroud to be extended past the host wall, Gutter Shroud Stop End (SKC-9627) and Fixings will be supplied to clad the open end of the shroud where necessary. To ensure Gutter Shroud is cut to the correct length, this information will be required at point of order.

The standard gutter is supplied to suit the full length including the additional offset and can be cut on site to suit if necessary.

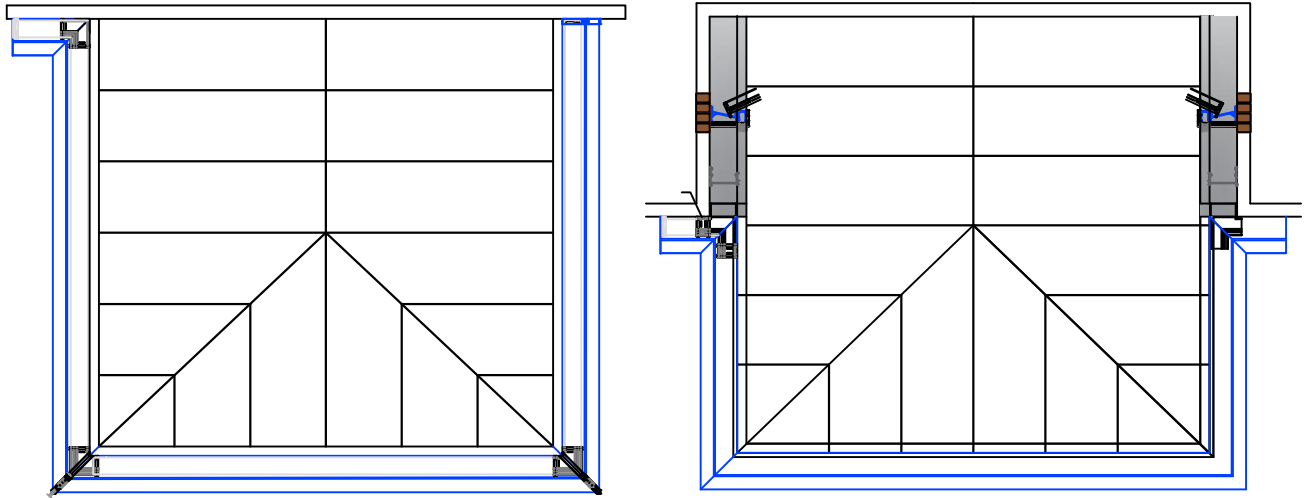


DIM A = Shroud extension past host wall

(Cut length of Shroud to include 3mm deduction for End Plate).

DO NOT SCALE FROM THIS DRAWING

DECORATIVE GUTTER SHROUD - 90° RETURN AT HOST WALL

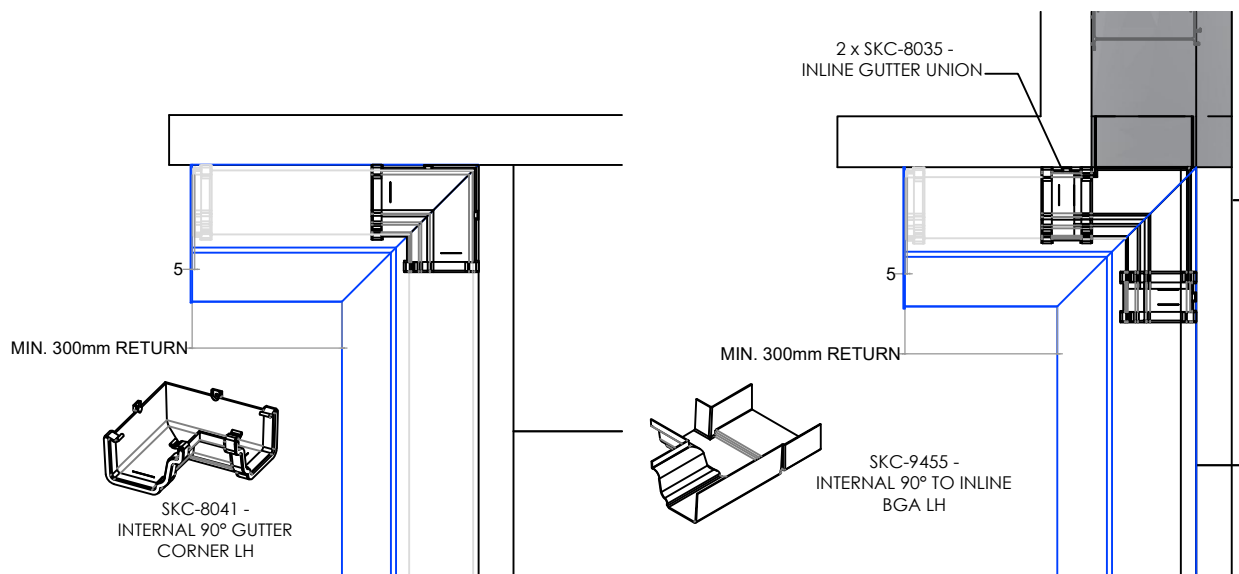


Where site conditions require the Gutter Shroud to be extended round a corner, Gutter Shroud Stop End (SKC-9627) and Fixings will be supplied to clad the open end of the shroud where necessary. To ensure Gutter Shroud is cut to the correct length, this information will be required at point of order.

Minimum return around a corner is 300mm

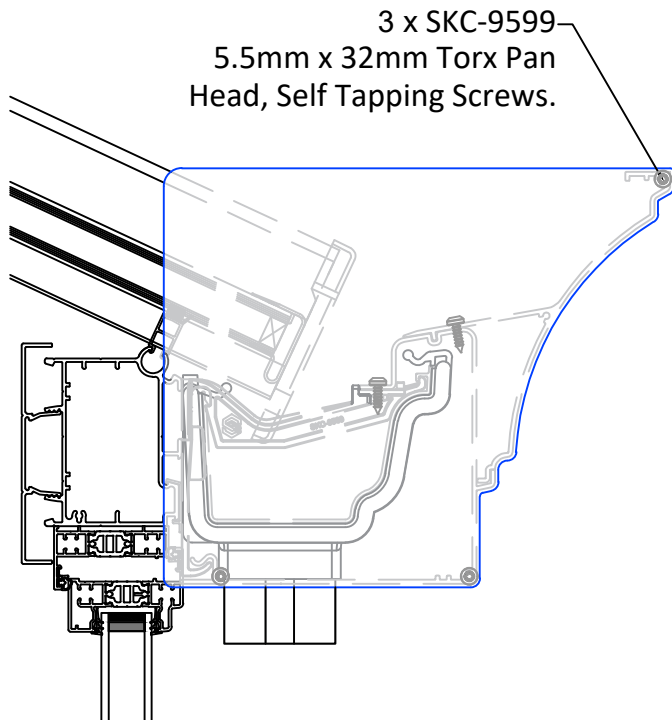
There is no option for internal 90° Cast Corner Covers, Gutter shroud is mitre cut and requires pointing on site with colour coded sealant.

Additional gutter and corners/adaptors sent to suit.

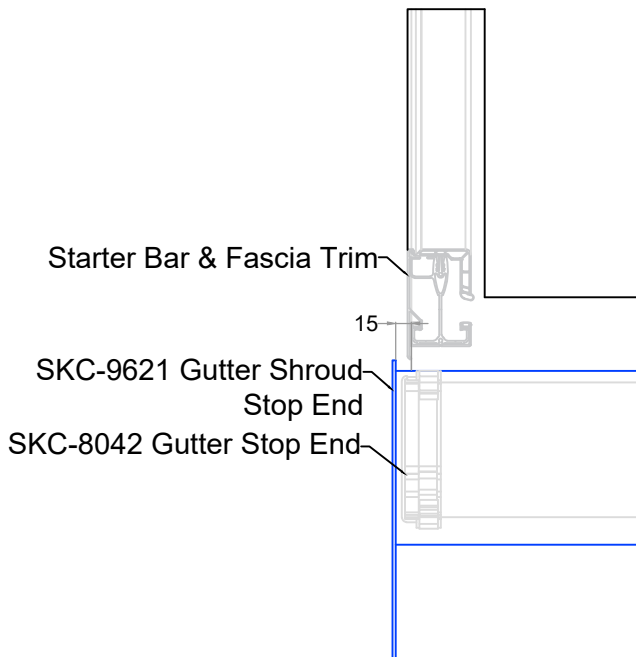


DO NOT SCALE FROM THIS DRAWING

DECORATIVE GUTTER SHROUD - STOP END



Gutter Shroud Stop End (SKC-9621) fixed to screw ports in the Shroud profile using 3 x SKC-9599 5.5 x 32mm Torx Pan Head Stainless Steel Self Tapping Screws.



Gutter Shroud extends +15mm past external frame on a gable end.

DO NOT SCALE FROM THIS DRAWING